



Workshop Recording | Resources | Slides

Topic	WIOA Youth Program FAQs
Presenters	Juie Deo and Denise Landy, NYSDOL Program Development Office
Length	90 Minutes
Description	<p>Workforce Innovation and Opportunity Act (WIOA) Title IB youth programs follow the same law/regulations and face similar questions, problems, experiences, and realities. This webinar will highlight frequently asked questions by staff in WIOA youth programs.</p> <p>Pre-webinar review: WorkforceGPS in depth walk through of third youth program guidance TEGL 21-16, including eligibility determination, program design, and the WIOA youth program elements.</p>
Recording	<p>At dews.webex.com choose "Webex Training" from the triple bar icon. In the upper left corner, go to "View session recordings." Search the workshop topic. Select "View" for the recording. When prompted, enter "Careers" for the password.</p> <p>To view polls in the presentation, if any, listen to the recording of the webinar. When the poll results are discussed, click on orange button on the top right to view the results in the poll box.</p>
Contact Us	YouthTeam@labor.ny.gov
Resources	Webinar Presentation Webinar Follow-up Resources
Follow Us	Facebook Twitter YouTube LinkedIn

WIOA Youth Program FAQs

Follow-up Resources

Workshop Resources

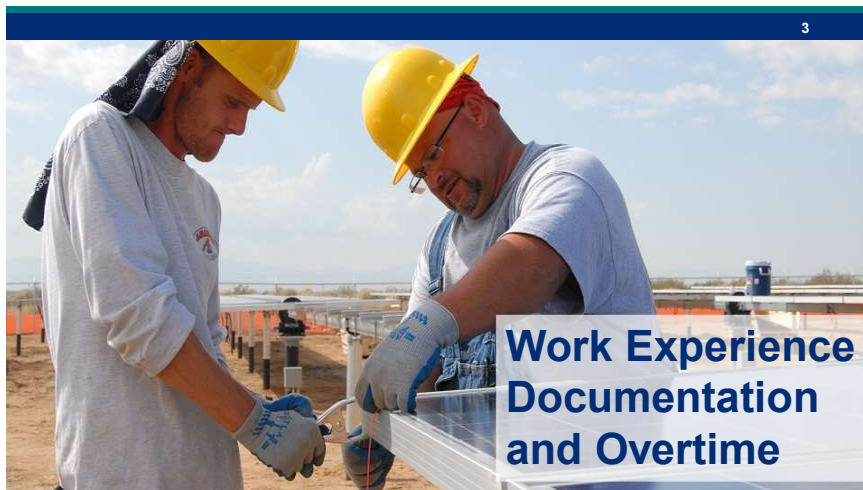
- [WIOA Youth Program FAQs](#) – PDF of the webinar presented on November 28, 2018.
- [SENSE Model Worksheet](#) – Tips for writing an effective case note in OSOS, using the **S**ituation, **E**valuation, **N**ext Steps, **S**ufficient Information and **E**mployment Related (SENSE) model.
- [SENSE Model Video](#) – Video on writing quality case notes in OSOS, using SENSE model.
- [Gender Pronouns](#) – Guide with proper pronouns for a variety of gender identities.
- [Selective Service Requirements](#) – List of who must register for Selective Service.
- [Training and Employment Guidance Letter \(TEGL\) 33-12](#) – WIA guidelines, still applicable to WIOA, with a good description of case management on page two.
- [Management Reports](#) – Interface for reports of data from OSOS.
- [Eligibility](#) –WIOA Title 1B Youth Program Eligibility with Low Income Exception information.
- [Pathways to High School Equivalency](#) – New York State Education Department accepted pathways to getting a High School Equivalency.
- [CareerZone \(CZ\)/JobZone \(JZ\) FAQs](#) – Responses to common questions about CZ/JZ.
- [The Pilot Assessment: A Guide to Integrating Positive Youth Development into Workforce Training Settings](#) – Contains good information about the importance of positive youth development in helping youth to become successful adults.
- **Email for Incentives Policies** – Please send your local Incentives Policy to the Youth Team at YouthTeam@labor.ny.gov

Youth Program TEGLS and TAs

- [TEGL 21-16](#) – Includes details on youth service elements and design framework by the United States Department of Labor (USDOL).
- [TEGL 10-16, Change 1](#) – Contains implementation and operation guidance of primary indicators of performance from USDOL.
- [Technical Advisory \(TA\) 11-12.2](#) – Current policy outlining documentation and verification requirements under WIA based on the USDOL Data Element Validation requirements from New York State Department of Labor (NYSDOL). This TA currently is applicable under WIOA.

WIOA Youth Program FAQs

Juie Deo & Denise Landy
Program Development Office



Documenting Incentives



Industry Recognized WIOA Credential



Industry Recognized WIOA Credential



Industry Recognized WIOA Credential

Is definitely NOT:

- × OJT
- × Customized Training

Industry Recognized WIOA Credential

Is definitely NOT:

- × OJT
- × Customized Training
- × Awarded/Issued by LWDB

Industry Recognized WIOA Credential

Is definitely NOT:

- × OJT
- × Customized Training
- × Awarded/Issued by LWDB

× **Stand Alone** Work Readiness Training

× **Stand Alone** General Skills Training

Industry Recognized WIOA Credential

Is definitely NOT:

- × OJT
- × Customized Training
- × Awarded/Issued by LWDB
- × Disqualified by USDOL
- × **Stand Alone** Work Readiness Training
- × **Stand Alone** General Skills Training

Industry Recognized WIOA Credential



Is...

Industry Recognized WIOA Credential

Is awarded for individual's attainment of SKILLS that are:

= Technical/Occupational/Industry

Industry Recognized WIOA Credential

Is awarded for individual's attainment of SKILLS that are:

= Technical/Occupational/Industry

= Measurable

Industry Recognized WIOA Credential

Is awarded for individual's attainment of SKILLS that are:

= Technical/Occupational/Industry

= Measurable

= Based on the standards developed/endorsed by businesses or industry associations

Industry Recognized WIOA Credential

Is awarded for individual's attainment of SKILLS that are:

= Technical/Occupational/Industry

= Measurable

= Based on the standards developed/endorsed by businesses or industry associations **and**

= Necessary to obtain employment or advance within an industry or occupation

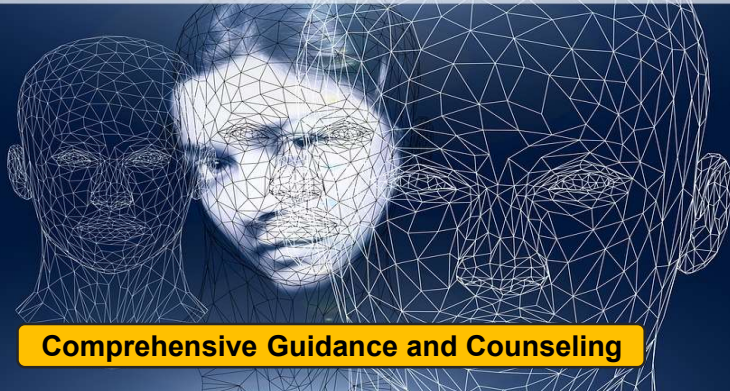


Proper Pronouns



Data Entry for Transgender Youth and Selective Service

Comprehensive Guidance & Counseling



Comprehensive Guidance and Counseling



ISY Needs Additional Assistance Limitation



WIOA has Two 5% Limitations

4 types of newly enrolled youth that ordinarily must be low-income in a Program Year

- A** All ISY
 - B** Have HSD/E and BSD
 - C** Have HSD/E and ELL
 - D** Needs Additional Assistance based on LWDB policy
- OSY with 3 types of barriers

4 types of newly enrolled youth that ordinarily must be low-income in a Program Year

- A** All ISY
 - B** Have HSD/E and BSD
 - C** Have HSD/E and ELL
 - D** Needs Additional Assistance based on LWDB policy
- OSY with 3 types of barriers
- 5% of these 4 types of youth are allowed to be not low-income

NYS Department of Education



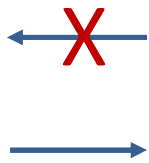
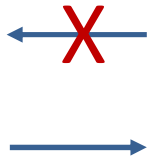
High School Diploma and Equivalency

Residents of NYS



TASC (Test Assessing Secondary Completion)
Approved 24-college-credit program
Regents HSE Examination Pathway
National External Diploma Program

Take NYSED approved HS diploma or equivalency



Portfolio Level in OSOS



**Data Element
Validation for
Individuals
with Disability**



Service TYPE

Service CATEGORY

Service

Service NAME

PROGRAM Service TYPE



Service TYPE LMI (Youth)

Service CATEGORY LMI Element

Service

Resume Update Service NAME Resume update by xyz

PROGRAM Service TYPE Youth Services

The screenshot shows a web application interface for customer services. At the top, there are tabs for CUSTOMER, PROVIDER, EMPLOYER, STAFF, and HELP. The 'Services' tab is selected. Below the tabs, there is a 'Detail' section with the following information:

- Service Name: Follow-up Adult Mentoring
- Service ID: 138615
- Service Type: Follow-up Adult Mentoring (Youth)
- Provider Name: ABC Training
- Location Name: ABC Training
- Provider ID: 49459
- Offering ID: 139197
- Plan Start Date: 03/01/2018
- Plan End Date: 03/01/2018
- Actual Start Date: 03/01/2018
- Actual End Date: [blank]
- Completed Successfully: Yes
- Next Contact Date: [blank]
- Program Service Type: Follow Up

Below the detail section is a table with columns: Provider Name, Service Name, Actual Start Date, Actual End Date, and Program Svc Type. The table contains three rows of data:

Provider Name	Service Name	Actual Start Date	Actual End Date	Program Svc Type
<input type="checkbox"/> Catholic Charities of Buffalo	Leadership Dev. - Big Brothers Big Sis			
<input checked="" type="checkbox"/> ABC Training	Follow-up Adult Mentoring	03/01/2018		Follow Up
<input type="checkbox"/> DC Regional Chamber of Commerce	Ment-Adult Mentoring	01/01/2018		Follow Up

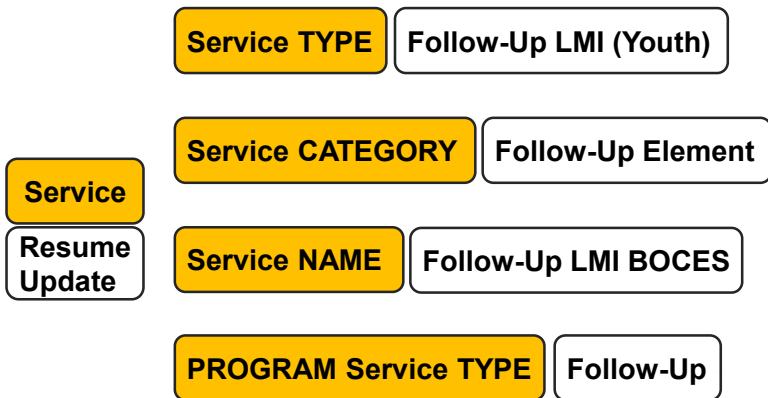
At the bottom of the interface, there are buttons for Options, Print List, New Service, Delete Service, Authorization, IPA Service Summary, Payment, and Tracking. There are also input fields for Save, Customer Detail, Comp Assess, Comments, and Check Labor Market Information.

The screenshot shows a 'Service Type' selection tree. The tree structure is as follows:

- Design Framework
 - Adult Mentoring Element
 - Alternative Secondary School/Dropout Recovery for HS Equivalency Element
 - Comprehensive Guidance and Counseling Element
 - Entrepreneurial Skills Training Element
 - Financial Literacy Education Element
 - Follow-up Services Element
 - Follow-up Adult Mentoring (Youth)
 - Follow-up Financial Literacy (Youth)
 - Follow-up Labor Market and Employment Information (Youth)
 - Follow-up Postsecondary Transition (Youth)
 - Follow-up Supportive Services (Youth)
 - Follow-up Non-Element (Youth)
 - Integrated Ed./Education Concurrent with Workforce Preparation Element
 - Labor Market and Employment Information Element
 - Leadership Development Opportunities Element
 - Occupational Skills Training Element
 - Postsecondary Education/Training Preparation and Transition Element

At the bottom of the interface, there is a search bar with 'Keyword(s)', a 'Search' button, and 'OK', 'Clear', and 'Cancel' buttons.





Service
Resume Update



Goals and Services/Elements

Improve Educational Achievement	Prepare for Employment	Support Career Success	Develop Leadership Potential	Assist in Transition
Tutoring & Study Skills	Paid & Unpaid Work Experiences	Comprehensive Guidance & Counseling	Entrepreneurial Skills Training	Follow-up
Alternative Sec. Education	Occupational Skills Training		Leadership Development	
Integrated Education (Education Concurrent with Workforce Training)		Supportive Services		
Postsecondary Transition	Labor Market Information	Financial Literacy	Adult Mentoring	



Develop Youth Program Brand and Model



The PILOT Assessment: A Guide to Integrating Positive Youth Development into Workforce Training Settings

Kristin A. Moore, Hannah Lantos, Kelly Murphy, Zakia Redd, and Sam Beckwith

- P**ositive Relationships
- I**mproved Skills
- L**inkages across Schools, Work, Families, and Communities
- O**pportunities to Contribute and Belong
- T**rustworthy and Safe Settings

Questions and Answers

