

Updates on the 2017 Economic Census and CBB 2.6

NY State Data Center Affiliates Meeting
May 23rd, 2019

Presented by:
Barbara Zamora-Appel and Kayla Curcio
U.S. Census Bureau



Agenda

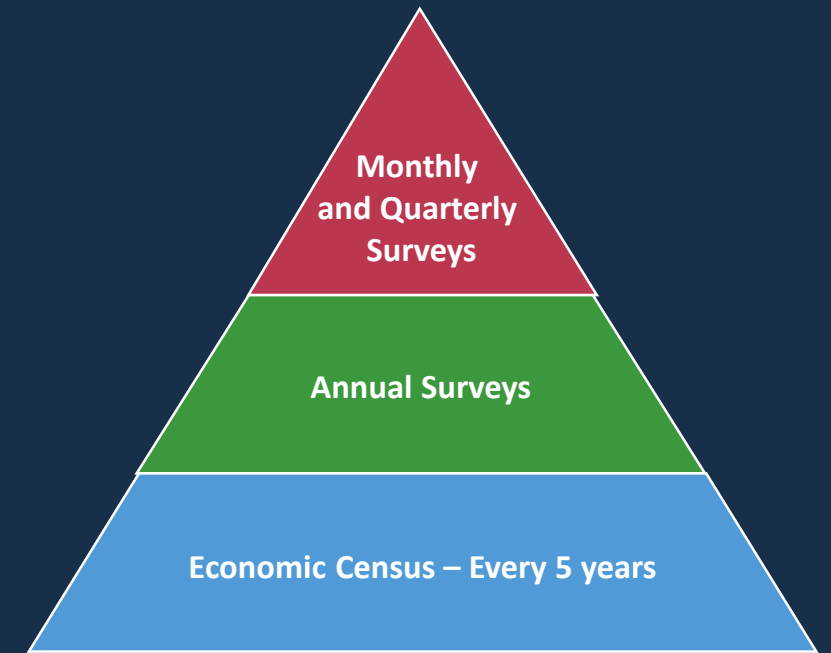
- Key changes that data users will see in the 2017 Economic Census data products
 - **Geographic area** changes
 - **North American Industry Classification System (NAICS)** changes
 - The New **North American Product Classification System (NAPCS)**
 - Other changes
- What's coming in August in Census Business Builder v. 2.6

About the Census Bureau

- The U.S. Census Bureau is the federal government's largest statistical agency.
- We conduct more than 130 censuses and surveys each year, including
 - **The Decennial Census** – the once-a-decade population and housing count of the United States
 - **The American Community Survey** – the ongoing survey that provides annual data on the nation's population
 - **The Economic Census** – the official five-year measure of American business
 - **The Census of Governments** – identifies the scope and nature of the nation's state and local government sector
- Our mission is to serve as the leading source of quality data about America's people, places, and economy.



U.S. Department of Commerce
Economics and Statistics Administration
U.S. CENSUS BUREAU
[census.gov](https://www.census.gov)



Census Bureau Economic Surveys are a key source for official statistics companies can use:

- Monthly and Quarterly are small sample surveys that provide the most **TIMELY** data available
- Annual surveys have larger samples and provide the most up-to-date **TREND** data available
- Every 5 years, the Economic Census measures all businesses and provides the most **COMPREHENSIVE** data available

These surveys set the standard for U.S. economic statistics, and are fueled by the data provided by individual businesses

The 2012 *Economic Census (EC)*

- NAICS: **Nearly every** 2- thru 6-digit code covered by the Census Bureau
 - Excludes Agriculture (NAICS 11) and other selected types of business (see https://www.census.gov/programs-surveys/economic-census/guidance/understanding-naics.html#par_textimage for full list of exclusions)
- Geography: National, state, metro, county, **place**, and ZIP Code levels (areas shown vary by sector)
- Other Dimensions: Data by **business size** (establishment and firm; employment and revenue), **Legal Form of Organization**, **Franchise status**, etc.
- Over **200 data variables** shown, including number of establishments, employment, payroll and “sales” plus sector-specific variables (inventories, assets, expenses, etc.)
- **Product Lines** data (revenue by products sold or manufactured or services provided)

(Note: Also have programs related to the 2012 EC, including the *2012 Economic Census of Island Areas*, the *2012 Survey of Business Owners* and the *2012 Commodity Flow Survey*)



U.S. Department of Commerce
Economics and Statistics Administration
U.S. CENSUS BUREAU
[census.gov](https://www.census.gov)

**DATA FROM THE
NATION'S BUSINESSES**

+

**STATS ON EVERY INDUSTRY
AND GEOGRAPHY**

=

**ONE VALUABLE RESOURCE
FOR YOUR BUSINESS**

**THE ECONOMIC CENSUS.
SEE HOW IT ALL ADDS UP.**

Learn more at [census.gov/EconomicCensus](https://www.census.gov/EconomicCensus)



2017 Economic Census

See How It All Adds Up



2017 Economic Census Planned Data Product Releases

Publication Series	Report Title	Planned Release Date or Date Range
Core Business Statistics	Economy Wide Business Statistics for the U.S. - First Look	September 2019
	Comparative Statistics for the U.S. (2012 NAICS Basis): 2017 and 2012	December 2021
	Bridge Statistics for the U.S. (2012 NAICS Basis): 2017 and 2012	December 2021
	Franchise	December 2021
Geographic Area Statistics (U.S., States, Metro Areas, Counties, and Places)	Mining: Geographic Area Statistics	January 2020 - November 2020
	Construction: Geographic Area Statistics	
	Manufacturing: Geographic Area Statistics	
	Wholesale Trade: Geographic Area Statistics	
	Retail Trade: Geographic Area Statistics	
	Services: Geographic Area Statistics	
Subject Series : Products North American Product Classification System (NAPCS)	Product Lines: NAICS x NAPCS for the U.S. and States where applicable	November 2020
	Product Lines: NAPCS x NAICS for the U.S.	

Summary / Subject Series	Planned Release Date or Date Range
Economy Wide Estab & Firm Size Summary Statistics by Revenue Size of Establishments	November 2020 - September 2021
Economy Wide Estab & Firm Size Summary Statistics by Employment Size of Establishments	
Economy Wide Estab & Firm Size Summary Statistics for Single Unit and Multiunit Firms	
Economy Wide Estab & Firm Size Summary Statistics by Revenue Size of Firms	
Economy Wide Estab & Firm Size Summary Statistics by Employment Size of Firms	
Economy Wide Estab & Firm Size Summary Statistics by Concentration of Largest Firms	
Economy Wide Estab & Firm Size Summary Statistics by Legal Form of Organization	
Manufacturing: Detailed Statistics for the U.S.	
Construction: Detailed Statistics for the U.S., Regions, and States	
Mining: Detailed Statistics for the U.S.	
Mining: Miscellaneous Subjects	
Construction: Miscellaneous Subjects	
Manufacturing: Miscellaneous Subjects	
Services: Miscellaneous Subjects	
Wholesale Trade: Miscellaneous Subjects	
Retail Trade: Miscellaneous Subjects	
Zip Code Statistics	December 2021

See the release schedule on the Economic Census web site

(<https://www.census.gov/programs-surveys/economic-census/about/release-schedules.html>) for updates

(Includes the Economic Census of Island Areas releases too)



U.S. Department of Commerce
Economics and Statistics Administration
U.S. CENSUS BUREAU
[census.gov](https://www.census.gov)

Census vs. Economic Geographies

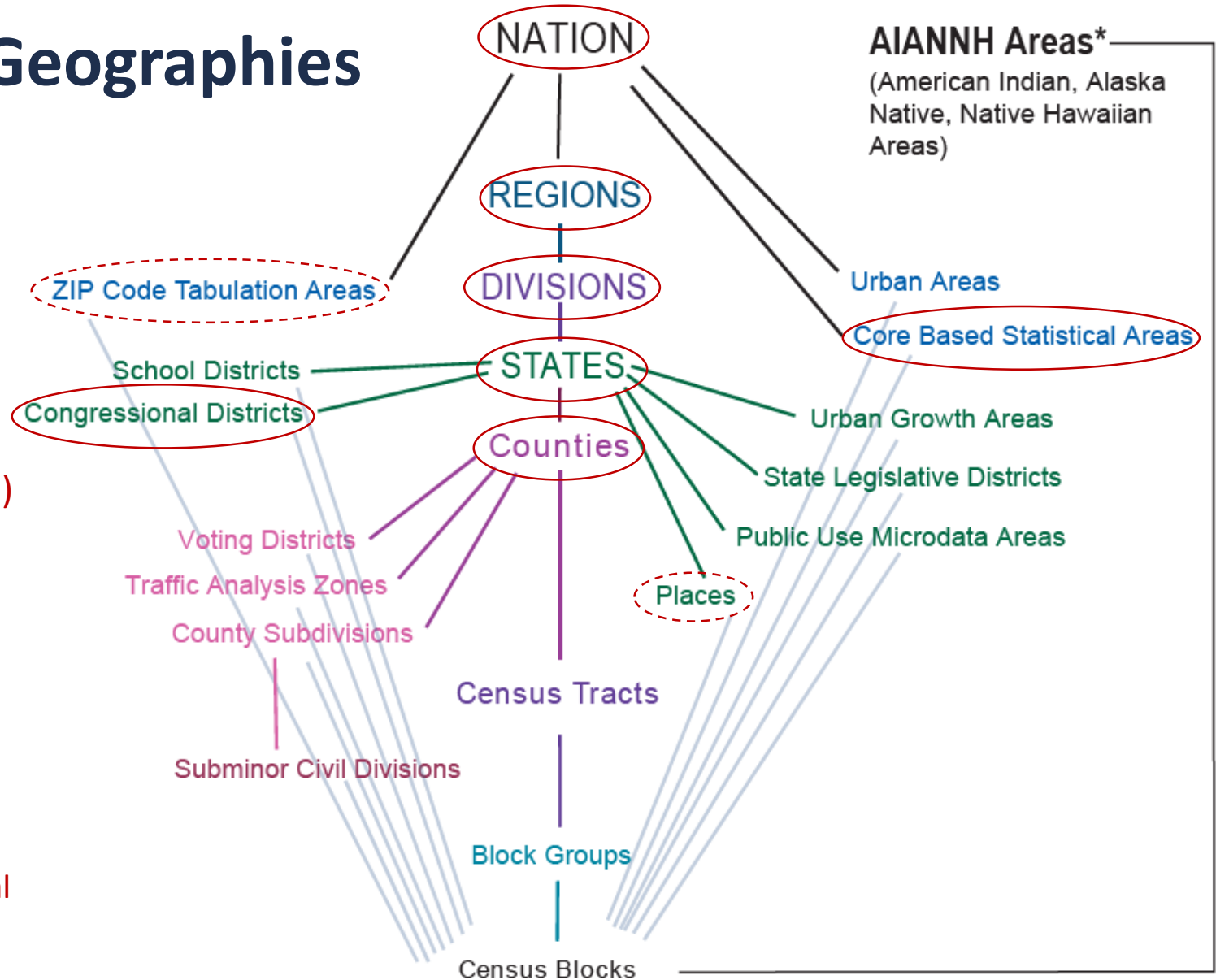
Include Legal Areas and Statistical Areas

Unique ECON Geographic Areas:

- ZIP Codes (vs. ZIP Code Tabulation Areas (ZCTAs))
- Economic Places (2,500+ pop/jobs)
- CFS Areas (not on chart – a subset of metros plus Remainders)
- Consolidated cities (also not on chart)

Notes:

- Most ECON program geographies are baselined back to prior (latest) Economic Census
- Businesses geocoded based on their physical address



Geographic Area Changes for 2017 EC

- **15 states** had metro areas (CBSAs) with some type of change
- **3 states** had counties with some type of change
 - Alaska, South Dakota, and Virginia
- **Every state** had economic place changes (**16,349** Places and parts; **58% changed**)
 - **4,891** Places with Area Gain
 - **3,976** Places with Area Loss
 - **125** Places where their code and/or name changed
 - **442** New Economic Places
 - **171** Dropped Economic Places
- **Island Areas**
 - No metro changes for Puerto Rico, no county- or place-equivalent changes for any of the other 4 island areas (U.S. Territories)

Visit <https://www.census.gov/programs-surveys/economic-census/geographies.html> for more information

State Summary of Geographic Area Changes for the 2017 Economic Census

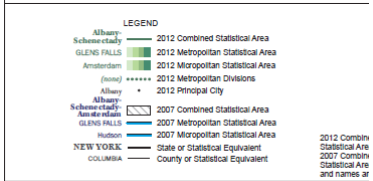
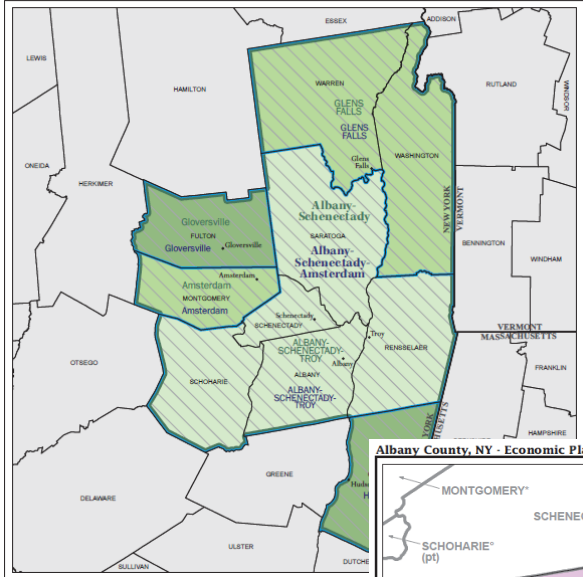
State	Metro Area Changes	County Changes	Places and Place Changes
Alabama	Birmingham CSA gained a Micro Area Huntsville CSA gained a Micro Area NEW Pensacola-Ferry Pass CSA NEW Eufaula Micro Area		314: Total Places 111 Places with Area Gain, 65 with Area Loss, and 4 with Name Change Only 15: New Economic Places 2: Dropped Economic Places
Alaska		Wade Hampton Census Area renamed to <u>Kusilvak</u> Census Area	66: Total Places 25 Places with Area Gain, 26 with Area Loss, and 1 with Name Change Only 2: New Economic Places 0: Dropped Economic Places
New York	2017 Economic Census Economic Place Changes from 2012 to 2017 for: New York		845: Total Places 72 Places with Area Gain, 83 with Area Loss, and 9 with Name Change Only 25: New Economic Places 14: Dropped Economic Places

COUNTY Code	TITLE	PLACE Code	TITLE
007	Broome County	49396	Nanticoke town
		65112	Sanford town
013	Chautauqua County	25164	Falconer village
023	Cortland County	77596	Virgil town
025	Delaware County	70629	Stamford town
027	Dutchess County	47207	Milan town
		58156	Pine Plains town
031	Essex County	15330	Chesterfield town
033	Franklin County	04319	Bangor town
037	Genesee County	01165	Alexander town (balance)
		56792	Pavilion town
051	Livingston County	17618	Conesus town
053	Madison County	31720	Hamilton town (balance)
055	Monroe County	65959	Scottsville village
067	Onondaga County	67510	Skaneateles village
069	Ontario County	79356	West Bloomfield town
077	Otsego County	41531	Laurens town
099	Seneca County	66333	Seneca Falls town (balance)
103	Suffolk County	66839	Shelter Island town
109	Tompkins County	30961	Groton village
117	Wayne County	43973	Lyons town
		63605	Rose town
121	Wyoming County	02418	Arcade town
		12782	Castile town (balance)
123	Yates County	47504	Milo town (balance)

COUNTY Code	TITLE	PLACE Code	TITLE
007	Broome County	98007	Balance of Broome County
025	Delaware County	64001	Roxbury town
027	Dutchess County	98027	Balance of Dutchess County
057	Montgomery County	29047	Glen town
069	Ontario County	16375	Clifton Springs village
		49440	Naples town
075	Oswego County	56352	Parish town
079	Putnam County	08070	Brewster village
089	St. Lawrence County	07938	Brasher town
099	Seneca County	66322	Seneca Falls village
105	Sullivan County	34473	Highland town
115	Washington County	30026	Granville village
117	Wayne County	43962	Lyons village
121	Wyoming County	02407	Arcade village

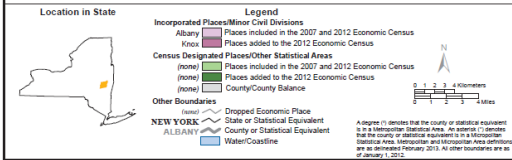
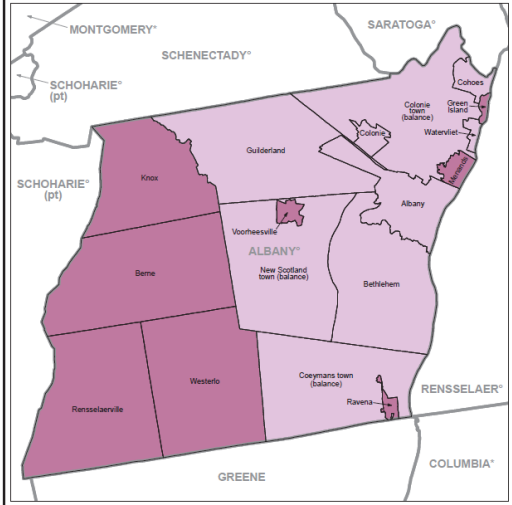
2012 vs. 2017 Map Resources

Albany-Schenectady, NY Combined Statistical Area



U.S. DEPARTMENT OF COMMERCE Economics and Statistics Administration U.S. Census Bureau

Albany County, NY - Economic Places



U.S. DEPARTMENT OF COMMERCE Economics and Statistics Administration U.S. Census Bureau 2012 Economic Census

<https://www.census.gov/programs-surveys/economic-census/geographies/reference-maps.html>



U.S. Department of Commerce
Economics and Statistics Administration
U.S. CENSUS BUREAU
census.gov

TIGERweb

- Home
- TIGERweb Applications
- WMS
- REST Services
- Data Files
- TIGERweb Geography

TIGERweb Applications

- TIGERweb**
- Contains:
 - Current (ACS 2018)
 - ACS 2018
 - ACS 2017
 - 2010 Census (adjusted boundaries)
 - Current (ACS 2018) Physical Features

Legend

TIGERweb Decennial

- Contains:
 - 2010 Census
 - Census 2000 (adjusted boundaries)
 - 2010 Census Physical Features

Legend

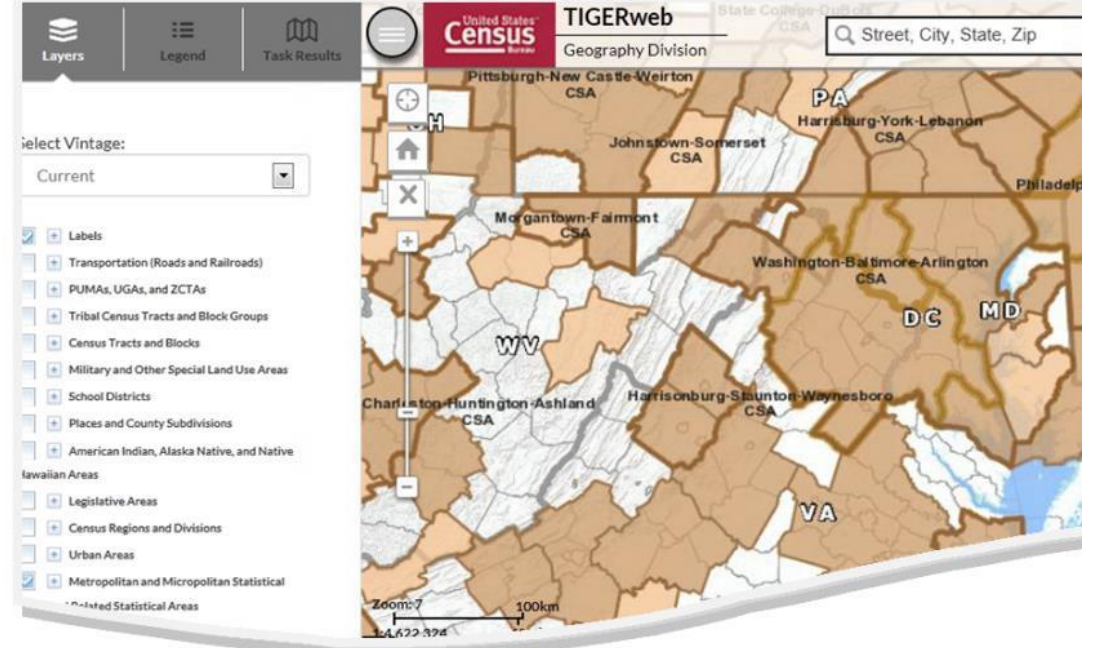
TIGERweb Economic Census

- Contains:
 - 2017 Economic Census
 - 2012 Economic Census
 - 2017 Census Physical Features

Legend

TIGERweb User Guide

TIGERweb BAS User Guide



TIGERweb, TIGERweb Decennial, and TIGERweb Economic Census Applications

The TIGERweb, TIGERweb Decennial, and TIGERweb Economic Census web-based applications allow the users to visualize our TIGER (Topographic Referencing database) data. The applications allow users to select features and view their attributes, to search for features by name or geocode, from a map. The TIGERweb, TIGERweb Decennial, and TIGERweb Economic Census applications provide a simple way to view our TIGER data.

<https://tigerweb.geo.census.gov/tigerwebcon/>

NAICS

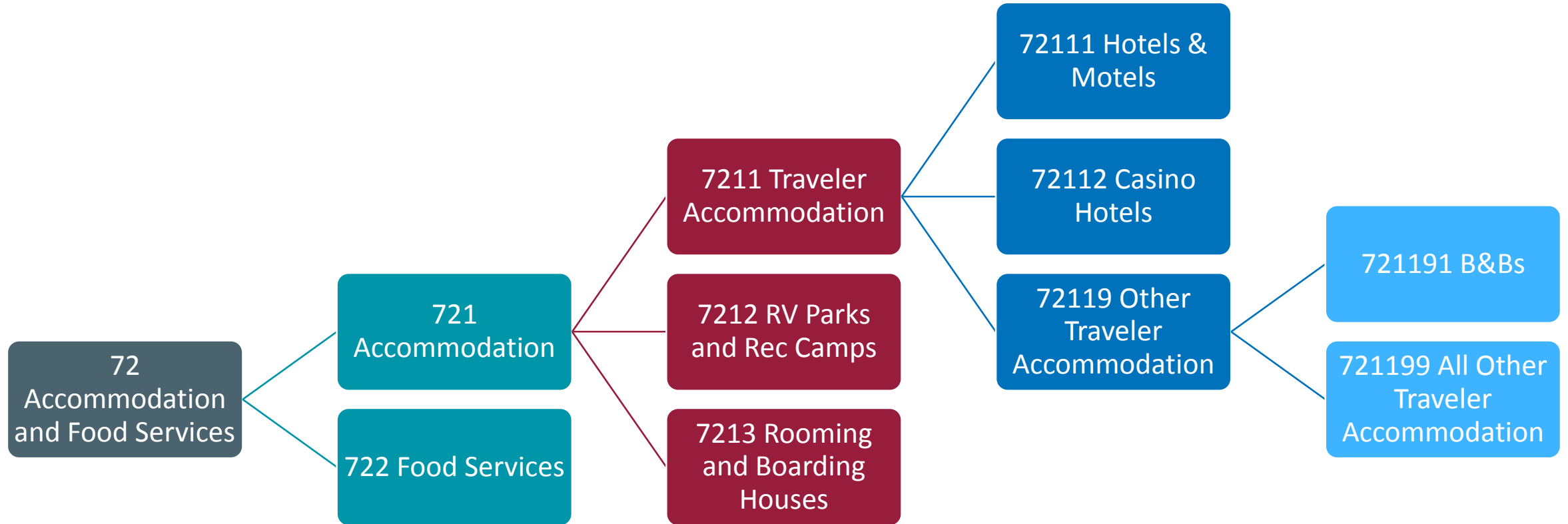


- The standard used by US Federal statistical agencies to classify businesses
- Developed by **OMB**, [Statistics Canada](#), and [Mexico's stat agency](#) (INEGI)
- Helps ensure statistical **comparability** across North American countries
- Adopted in **1997** to replace the Standard Industrial Classification (SIC) system
- Updated every 5 years
 - [2017 NAICS Manual](#)
- Businesses and others can have a role in updates

NAICS website: <https://www.census.gov/eos/www/naics/>

Federal Register Notices: https://www.census.gov/eos/www/naics/federal_register_notices/fedregister.html

NAICS Hierarchy: An Example



NAICS Changes for 2017

- Types of Changes (at the 6-digit NAICS level)
 - One-to-One (Recode), Many-to-One (Combo), and Many-to-Many
 - No One-to-Many (Splitter)

- Sector Changes

- Mining

2012 NAICS Code	2012 NAICS U.S. Description	2017 NAICS Code	2017 NAICS U.S. Description
211111	Crude Petroleum and Natural Gas Extraction <i>crude petroleum extraction</i>	211120	Crude Petroleum Extraction
	<i>natural gas extraction</i>	211130	Natural Gas Extraction
211112	Natural Gas Liquid Extraction		
212231	Lead Ore and Zinc Ore Mining	212230	Copper, Nickel, Lead, and Zinc Mining
212234	Copper Ore and Nickel Ore Mining		

Key:
 Recode (no content change)
 Many-to-One (combination)
 Many-to-Many

- Manufacturing

2012 NAICS Code	2012 NAICS U.S. Description	2017 NAICS Code	2017 NAICS U.S. Description
333911	Pump and Pumping Equipment Manufacturing	333914	Measuring, Dispensing, and Other Pumping Equipment Manufacturing
333913	Measuring and Dispensing Pump Manufacturing		
335221	Household Cooking Appliance Manufacturing	335220	Major Household Appliance Manufacturing
335222	Household Refrigerator and Home Freezer Manufacturing		
335224	Household Laundry Equipment Manufacturing		
335228	Other Major Household Appliance Manufacturing		



U.S. Department of Commerce
 Economics and Statistics Administration
 U.S. CENSUS BUREAU
census.gov

NAICS Changes for 2017 (cont.)

- Retail Trade

2012 NAICS Code	2012 NAICS U.S. Description	2017 NAICS Code	2017 NAICS U.S. Description
452111	Department Stores (except Discount Department Stores)	452210	Department Stores
452112	Discount Department Stores <i>insignificant perishable grocery sales</i>		
	<i>significant perishable grocery sales</i>		
452910	Warehouse Clubs and Supercenters	452311	Warehouse Clubs and Supercenters
452990	All Other General Merchandise Stores	452319	All Other General Merchandise Stores
454111	Electronic Shopping	454110	Electronic Shopping and Mail-Order Houses
454112	Electronic Auctions		
454113	Mail-Order Houses		

- Information

Key:

- Recode (no content change)
- Many-to-One (combination)
- Many-to-Many

2012 NAICS Code	2012 NAICS U.S. Description	2017 NAICS Code	2017 NAICS U.S. Description
512210	Record Production	512250	Record Production and Distribution
512220	Integrated Record Production/Distribution		
517110	Wired Telecommunications Carriers	517311	Wired Telecommunications Carriers
517210	Wireless Telecommunications Carriers (except Satellite)	517312	Wireless Telecommunications Carriers (except Satellite)

NAICS Changes for 2017 (cont.)

- Real Estate & Rental & Leasing

2012 NAICS Code	2012 NAICS U.S. Description	2017 NAICS Code	2017 NAICS U.S. Description
532220	Formal Wear and Costume Rental	532281	Formal Wear and Costume Rental
532230	Video Tape and Disc Rental	532282	Video Tape and Disc Rental
532291	Home Health Equipment Rental	532283	Home Health Equipment Rental
532292	Recreational Goods Rental	532284	Recreational Goods Rental
532299	All Other Consumer Goods Rental	532289	All Other Consumer Goods Rental

- Professional, Scientific, and Technical Services

2012 NAICS Code	2012 NAICS U.S. Description	2017 NAICS Code	2017 NAICS U.S. Description
541711	Research and Development in Biotechnology nanobiotechnologies research and experimental development laboratories except nanobiotechnologies research and experimental development laboratories	541713 541714	Research and Development in Nanotechnology Research and Development in Biotechnology (except Nanobiotechnology)
541712	Research and Development in the Physical, Engineering, and Life Sciences (except Biotechnology) nanotechnology research and experimental development laboratories except nanotechnology research and experimental development laboratories	541713 541715	Research and Development in Nanotechnology Research and Development in the Physical, Engineering, and Life Sciences (except Nanotechnology and Biotechnology)

Visit the NAICS website for more information (<https://www.census.gov/eos/www/naics/>)

Key:
 Recode (no content change)
 Many-to-One (combination)
 Many-to-Many

North American Product Classification System (NAPCS)

- **Product Lines** provide a more detailed breakout of the products made and sold and services provided by businesses
- **2012 Economic Census Product Lines Data**
 - Mining and Manufacturing
 - Product lines data shown at the 6- thru 10-digit product code levels
 - Products data separate from industry data (“Industry/Product Analysis” table relates them)
 - Construction
 - Data by Kind of Business and Type of Construction shown in place of product lines
 - Other Sectors
 - Retail, Wholesale, and most other sectors show data at the broad (end in “0”) and detailed lines

(Only National level Product Lines data shown for NAICS 55, Management of Companies and Enterprises)

2012 EC Manufacturing Product Lines for “Clothing”

Products and services code	Meaning of Products and services code	Year	Number of companies with shipments of \$100,000 or more	Product shipments value (\$1,000)
315220	Men's and boys' cut and sew apparel manufacturing	2012	N	1,503,547
3152201	Men's and boys' nightwear, robes, and knit underwear, made from purchased fabrics	2012	N	108,279
3152201100	Men's and boys' nightwear, robes (including thermal, undershirts, undershorts and briefs, and woven boxer shorts), and knit underwear, made from purchased fabrics	2012	8	108,279
3152203100	Men's and boys' tailored suits, including dress uniforms (firefighter, military, police, etc.), made from purchased fabrics	2012	60	172,156
3152205100	Men's and boys' tailored overcoats, topcoats, car and suburban coats (including water-repellent), made from purchased fabrics	2012	7	14,685
3152207100	Men's and boys' tailored dress and sport coats and vests, made from purchased fabrics	2012	16	47,664
3152209100	Men's and boys' (including unisex) knit dress and sport shirts (including polo shirts, tank tops, sweatshirts, and t-shirts), made from purchased fabrics	2012	37	220,403
315220B100	Men's and boys' woven dress and sport shirts, made from purchased fabrics	2012	38	126,709
315220D100	Men's and boys' separate dress and sport trousers, pants, and slacks (excluding jeans, jean-cut casual slacks, workpants, and sweatpants), made from purchased fabrics	2012	27	100,955
315220F100	Men's and boys' jeans and jean-cut casual slacks, made from purchased fabrics	2012	14	50,663
315220H100	Men's and boys' work shirts, made from purchased fabrics	2012	24	55,073
315220J100	Men's and boys' workpants (excluding jeans), work jackets, coveralls, overalls, jumpsuits, and washable service apparel (including nondisposable hospital patient wear), made from purchased fabrics	2012	42	242,649
315220L1	Men's and boys' nontailored coats, jackets, and vests, including down- and feather-filled (excluding ski apparel and work jackets), made from purchased fabrics	2012	N	279,198
315220L110	Men's and boys' heavyweight nontailored coats, jackets, and vests, including down- and feather-filled (excluding ski apparel and work jackets), made from purchased fabrics	2012	28	151,706
315220L120	Men's and boys' lightweight nontailored coats, jackets, and vests (excluding ski apparel and work jackets), made from purchased fabrics	2012	18	127,492
315220LYWV	Men's and boys' nontailored coats, jackets, and vests, including down- and feather-filled (excluding ski apparel and work jackets), made from purchased fabrics, nsk	2012	N	0
315220N100	Men's and boys' shorts (including dress and athletic) and swimwear, made from purchased fabrics	2012	14	13,477
315220P100	Men's and boys' sweaters, sweater vests, sweatpants, jogging and warm-up suits, playsuits, beachwear (excluding swimsuits), and ski apparel, made from purchased fabrics	2012	14	8,405
315220WY	Men's and boys' cut and sew apparel manufacturing, nsk, total	2012	N	63,231
315220WYWW	Men's and boys' cut and sew apparel manufacturing, nsk, for nonadministrative-record establishments	2012	N	23,230
315220WYWY	Men's and boys' cut and sew apparel manufacturing, nsk, for administrative-record establishments	2012	N	40,001

2012 EC Wholesale and Retail Product Lines for "Clothing"

Products and services code	Meaning of Products and services code	Year	Number of establishments	Total sales of estabs reporting product line (\$1,000)	Sales (\$1,000)	Product line sales as % of total sales of estabs reporting line (%)	Product line sales as % of total sales of all estabs (%)	Response coverage of product lines inquiry (%)	Percent of sales accounted for by industry (%)
10000	Industry total	2012	16,287	X	153,744,836	X	100	72.9	X
13800	Men's and boys' clothing	2012	5,303	74,740,913	38,638,480	51.7	25.1	56.1	92.9
13811	Men's and boys' suits, coats, and formal wear	2012	1,308	13,253,437	4,377,010	33	2.8	X	X
13812	Men's and boys' dress and casual shirts, sweaters, slacks, and jeans	2012	2,754	46,496,709	21,830,962	47	14.2	X	X
13813	Men's and boys' underwear and sleepwear	2012	563	8,874,494	1,688,250	19	1.1	X	X
13814	Men's and boys' work clothing and uniforms	2012	1,104	14,954,429	3,677,394	24.6	2.4	X	X
13815	Other men's and boys' clothing, excluding men's clothing accessories, including hats and neckwear								

Data for NAICS 4243, Apparel, piece goods, and notions merchant wholesalers

Products and services code	Meaning of Products and services code	Year	Number of establishments	Total sales of estabs reporting product line (\$1,000)	Sales (\$1,000)
20000	Industry total	2012	97,721	X	172,384,550
20200	Men's wear, incl accessories	2012	46,386	119,606,636	33,468,748
20201	Men's overcoats, topcoats, raincoats, outer jackets	2012	23,678	71,289,241	1,575,375
20202	Men's suits & formal wear	2012	12,515	53,973,492	2,196,466
20203	Men's sport coats & blazers	2012	11,493	47,513,219	822,915
20204	Men's tailored & dress slacks	2012	10,746	34,058,862	787,324
20205	Men's casual slacks & jeans, shorts, etc.	2012	32,647	104,413,081	6,625,992
20206	Men's career & work uniforms	2012	3,731	9,292,069	452,988
20207	Men's dress shirts	2012	13,971	53,268,743	1,418,918
20208	Men's sport shirts, incl t-shirts, knit & woven shirts, etc.	2012	31,453	80,327,318	7,733,531
20209	Men's sweaters	2012	17,969	51,255,745	871,573
20211	Men's hosiery, pajamas, robes, underwear	2012	14,301	52,360,400	974,806
20212	Men's sports apparel, incl tennis, golf, jogging, swimming, & other exercise apparel	2012	14,988	62,374,599	2,079,092
20214	Men's accessories, incl hats, gloves, neckwear, handkerchiefs, belts, rain accessories, etc.	2012	32,837	104,928,943	4,972,924
20215	Custom-made garments	2012	1,353	3,009,298	178,720
20216	Men's sweat tops, pants, & warm-ups	2012	11,410	45,485,783	1,061,208
20218	Other apparel items	2012	10,092	39,513,152	1,716,916

Data for NAICS 4481, Clothing Stores



U.S. Department of Commerce
Economics and Statistics Administration
U.S. CENSUS BUREAU
census.gov

Corresponding 2017 EC NAPCS Examples

2017 NAPCS collection code	Meaning of 2017 NAPCS collection code	Number of establishments reporting in the NAPCS collection code	Total sales, value of shipments, or revenue of establishments reporting in the NAPCS collection code (\$1,000)	Sales, value of shipments, or revenue of NAPCS collection code (\$1,000)	Percent of total NAPCS collection code sales, value of shipments, or revenue imputed (%)	Relative standard error of NAPCS collection code sales, value of shipments, or revenue (%)	NAPCS collection code sales, value of shipments, or revenue as % of industry sales, value of shipments, or revenue (%)	NAPCS collection code sales, value of shipments, or revenue as % of total sales, value of shipments, or revenue of establishments reporting NAPCS collection code (%)	Number of establishments with NAPCS collection code as % of industry establishments (%)		
4000500000	Wholesale sales for men's and boys' clothing	XXX	\$XXX,XXX	\$XXX,XXX	XXX.X	XXX.X	XXX.X	XXX.X	XXX.X		
4000500003	Wholesale sales for men's and boys' suits, coats, and formal wear	XXX	\$XXX,XXX	\$XXX,XXX	XXX.X	XXX.X	XXX.X	XXX.X	XXX.X		
4000500006	Wholesale sales for men's and boys' dress and casual shirts, sweaters, slacks, and jeans	2017 NAPCS collection code	Meaning of 2017 NAPCS collection code	Number of establishments reporting in the NAPCS collection code	Total sales, value of shipments, or revenue of establishments reporting in the NAPCS collection code (\$1,000)	Sales, value of shipments, or revenue of NAPCS collection code (\$1,000)	Percent of total NAPCS collection code sales, value of shipments, or revenue imputed (%)	Relative standard error of NAPCS collection code sales, value of shipments, or revenue (%)	NAPCS collection code sales, value of shipments, or revenue as % of industry sales, value of shipments, or revenue (%)	NAPCS collection code sales, value of shipments, or revenue as % of total sales, value of shipments, or revenue of establishments reporting NAPCS collection code (%)	Number of establishments with NAPCS collection code as % of industry establishments (%)
4000500009	Wholesale sales for men's and boys' underwear and sleepwear										
4000500012	Wholesale sales for men's and boys' work clothing and uniforms, except athletic uniforms										
4000500015	Wholesale sales for other men's and boys' clothing, except accessories										
5000350000	Retail sales for men's clothing										
5000350003	Retail sales for men's outerwear coats, jackets, windbreakers, and similar	XXX	\$XXX,XXX	\$XXX,XXX	XXX.X	XXX.X	XXX.X	XXX.X	XXX.X		
5000350006	Retail sales for men's suits and formal wear	XXX	\$XXX,XXX	\$XXX,XXX	XXX.X	XXX.X	XXX.X	XXX.X	XXX.X		
5000350009	Retail sales for men's sport coats and blazers	XXX	\$XXX,XXX	\$XXX,XXX	XXX.X	XXX.X	XXX.X	XXX.X	XXX.X		
5000350012	Retail sales for men's tailored and dress slacks	XXX	\$XXX,XXX	\$XXX,XXX	XXX.X	XXX.X	XXX.X	XXX.X	XXX.X		
5000350015	Retail sales for men's casual slacks and jeans, walking shorts, etc.	XXX	\$XXX,XXX	\$XXX,XXX	XXX.X	XXX.X	XXX.X	XXX.X	XXX.X		
5000350018	Retail sales for men's dress shirts	XXX	\$XXX,XXX	\$XXX,XXX	XXX.X	XXX.X	XXX.X	XXX.X	XXX.X		
5000350021	Retail sales for men's sport shirts, including t-shirts, knit and woven shirts, etc.	XXX	\$XXX,XXX	\$XXX,XXX	XXX.X	XXX.X	XXX.X	XXX.X	XXX.X		
5000350024	Retail sales for men's sweaters	XXX	\$XXX,XXX	\$XXX,XXX	XXX.X	XXX.X	XXX.X	XXX.X	XXX.X		
5000350027	Retail sales for men's sweat tops, pants, and warm-ups	XXX	\$XXX,XXX	\$XXX,XXX	XXX.X	XXX.X	XXX.X	XXX.X	XXX.X		
5000350031	Retail sales for men's underwear, nightwear, and hosiery	XXX	\$XXX,XXX	\$XXX,XXX	XXX.X	XXX.X	XXX.X	XXX.X	XXX.X		
5000350034	Retail sales for men's career and work uniforms	XXX	\$XXX,XXX	\$XXX,XXX	XXX.X	XXX.X	XXX.X	XXX.X	XXX.X		
5000350037	Retail sales for men's sports apparel, including tennis, golf, jogging, swimming, skiing, camping, fishing, hiking, and other rugged outer and exercise apparel	XXX	\$XXX,XXX	\$XXX,XXX	XXX.X	XXX.X	XXX.X	XXX.X	XXX.X		
5000350041	Retail sales for other men's wear	XXX	\$XXX,XXX	\$XXX,XXX	XXX.X	XXX.X	XXX.X	XXX.X	XXX.X		

Visit the NAPCS website and Concordance Tables for more information (<https://www.census.gov/programs-surveys/economic-census/guidance/understanding-napcs.html>)



U.S. Department of Commerce
Economics and Statistics Administration
U.S. CENSUS BUREAU
[census.gov](https://www.census.gov)

Other Changes for 2017

- “Structural” Product Changes
 - New “First Look” release
 - For 2012 EC, “Advance Report” had 2-digit NAICS national level only; Industry Series reports added selected 2- thru 6-digits
 - For 2017 EC: Still National data only but with 2- thru selected lower level NAICS detail
 - “First Look” will be superseded by U.S. data in Geographic Area Statistics
 - Establishment & Firm Size releases
 - Consolidated into 7 tables (separate tables by sector in 2012)
 - Size categories standardized across sectors

2017 Economic Census Planned Data Product Releases

Publication Series	Report Title	Planned Release Date or Date Range
Core Business Statistics	Economy Wide Business Statistics for the U.S. - First Look	September 2019
	Comparative Statistics for the U.S. (2012 NAICS Basis): 2017 and 2012	December 2021
	Bridge Statistics for the U.S. (2012 NAICS Basis): 2017 and 2012	December 2021
	Franchise	December 2021
Geographic Area Statistics (U.S., States, Metro Areas, Counties, and Places)	Mining: Geographic Area Statistics	January 2020 - November 2020
	Construction: Geographic Area Statistics	
	Manufacturing: Geographic Area Statistics	
	Wholesale Trade: Geographic Area Statistics	
	Retail Trade: Geographic Area Statistics	
	Services: Geographic Area Statistics	
Subject Series : Products North American Product Classification System (NAPCS)	Product Lines: NAICS x NAPCS for the U.S. and States where applicable	November 2020
	Product Lines: NAPCS x NAICS for the U.S.	

Summary / Subject Series		
Economy Wide Estab & Firm Size Summary Statistics by Revenue Size of Establishments	November 2020 - September 2021	
Economy Wide Estab & Firm Size Summary Statistics by Employment Size of Establishments		
Economy Wide Estab & Firm Size Summary Statistics for Single Unit and Multiunit Firms		
Economy Wide Estab & Firm Size Summary Statistics by Revenue Size of Firms		
Economy Wide Estab & Firm Size Summary Statistics by Employment Size of Firms		
Economy Wide Estab & Firm Size Summary Statistics by Concentration of Largest Firms		
Economy Wide Estab & Firm Size Summary Statistics by Legal Form of Organization		
Manufacturing: Detailed Statistics for the U.S.	December 2021	
Construction: Detailed Statistics for the U.S., Regions, and States		
Mining: Detailed Statistics for the U.S.		
Mining: Miscellaneous Subjects		
Construction: Miscellaneous Subjects		
Manufacturing: Miscellaneous Subjects		
Services: Miscellaneous Subjects		
Wholesale Trade: Miscellaneous Subjects		
Retail Trade: Miscellaneous Subjects		
Zip Code Statistics		

Other Changes for 2017 (cont.)

- **“Structural” Product Changes (cont.)**
 - Adjustments to **Miscellaneous Subjects** tables
 - **38 tables dropped**
 - 2 Mining, 4 Construction, 4 Manufacturing, 1 Trans. & Warehousing, 2 Information, 4 Finance & Insurance, 5 Real Estate, 6 Prof/Sci/Tech, 2 Management, 2 Admin, 2 Healthcare, 2 Accommodations, 2 Other Services
 - **7 tables added**
 - 1 Utilities (“Cost of Purchased Gas for Resale by Utilities”)
 - 1 Construction (“Location of Const: Employment Size”)
 - 1 Wholesale Trade (Petroleum)
 - 1 Educational Services (“Modes of Instruction”)
 - 1 Healthcare (“New Patient Care Revenue by Payer”)
 - 2 Accommodation (“Electronic Menu Ordering” and Limited/Full/Luxury Hotel”)
 - **Class of Customer, Enterprise Support, and Exported Services** no longer separate releases by sector

Summary / Subject Series		November 2020 - September 2021
Economy Wide Estab & Firm Size Summary Statistics by Revenue Size of Establishments		
Economy Wide Estab & Firm Size Summary Statistics by Employment Size of Establishments		
Economy Wide Estab & Firm Size Summary Statistics for Single Unit and Multiunit Firms		
Economy Wide Estab & Firm Size Summary Statistics by Revenue Size of Firms		
Economy Wide Estab & Firm Size Summary Statistics by Employment Size of Firms		
Economy Wide Estab & Firm Size Summary Statistics by Concentration of Largest Firms		
Economy Wide Estab & Firm Size Summary Statistics by Legal Form of Organization		
Manufacturing: Detailed Statistics for the U.S.		
Construction: Detailed Statistics for the U.S., Regions, and States		
Mining: Detailed Statistics for the U.S.		
Mining: Miscellaneous Subjects		
Construction: Miscellaneous Subjects		
Manufacturing: Miscellaneous Subjects		
Services: Miscellaneous Subjects		
Wholesale Trade: Miscellaneous Subjects		
Retail Trade: Miscellaneous Subjects		
Zip Code Statistics		December 2021

See the Economic Census web site (<https://www.census.gov/programs-surveys/economic-census.html>) for more information

Other Changes for 2017 (cont.)

- New Disclosure Rules** (and their impacts)

- Historically, Number of Establishments was not suppressed even when other variables are withheld
- New IRS privacy rules require us to suppress Establishment counts when < 3 and/or when other data variables suppressed
 - Will also be providing more information on measures of reliability

Geographic area name	2012 NAICS code	Meaning of 2012 NAICS code	Meaning of Type of operation or tax status code	Year	Number of establishments	Value of sales, shipments, receipts, revenue, or business done (\$1,000)	Annual payroll (\$1,000)	First-quarter payroll (\$1,000)	Number of employees
Suitland CDP, Maryland	42	Wholesale trade	Merchant wholesalers, except manufacturers' sales branches and offices	2012	2	D	D	D	b
Suitland CDP, Maryland	44-45	Retail trade	Total	2012	43	240,898	26,617	6,372	848
Suitland CDP, Maryland	51	Information	Total	2012	4	N	D	D	b
Suitland CDP, Maryland	52	Finance and insurance	Total	2012	6	N	920	227	21
Suitland CDP, Maryland	53	Real estate and rental and leasing	Total	2012	14	D	D	D	c
Suitland CDP, Maryland	54	Professional, scientific, and technical services	All establishments	2012	21	41,922	17,101	4,065	199
Suitland CDP, Maryland	54	Professional, scientific, and technical services	Establishments subject to federal income tax	2012	20	D	D	D	c
Suitland CDP, Maryland	54	Professional, scientific, and technical services	Establishments exempt from federal income tax	2012	1	D	D	D	a
Suitland CDP, Maryland	56	Administrative and support and waste management and remediation services	Total	2012	6	3,811	1,775	422	28
Suitland CDP, Maryland	61	Educational services	All establishments	2012	1	D	D	D	a
Suitland CDP, Maryland	61	Educational services	Establishments exempt from federal income tax	2012	1	D	D	D	a
Suitland CDP, Maryland	62	Health care and social assistance	All establishments	2012	16	15,612	4,213	941	125
Suitland CDP, Maryland	62	Health care and social assistance	Establishments subject to federal income tax	2012	13	14,547	3,596	775	95
Suitland CDP, Maryland	62	Health care and social assistance	Establishments exempt from federal income tax	2012	3	1,065	617	166	30
Suitland CDP, Maryland	72	Accommodation and food services	Total	2012	20	19,828	4,390	901	210
Suitland CDP, Maryland	81	Other services (except public administration)	All establishments	2012	17	D	D	D	c
Suitland CDP, Maryland	81	Other services (except public administration)	Establishments subject to federal income tax	2012	16	D	D	D	c
Suitland CDP, Maryland	81	Other services (except public administration)	Establishments exempt from federal income tax	2012	1	D	D	D	a

Other Changes for 2017 (cont.)

- NAICS and Geographic levels published in **Geographic Area** tables
 - For 2012 EC, data released varied by sector
 - For 2017 EC, **no Place data** for Manufacturing
 - Published levels for other sectors may be reduced based on response rates, data quality, suppression rules, and other factors
 - **Check the Economic Census web site for more info**
- Economic Census of Island Areas
 - Releases will mirror the U.S. data tables as much as possible (consolidated)
 - 2 Geographic Area Series tables
 - 4 NAPCS tables
 - 4 Size tables
 - 22 Industry tables (Manufacturing and Construction)
 - 13 Miscellaneous Subjects tables

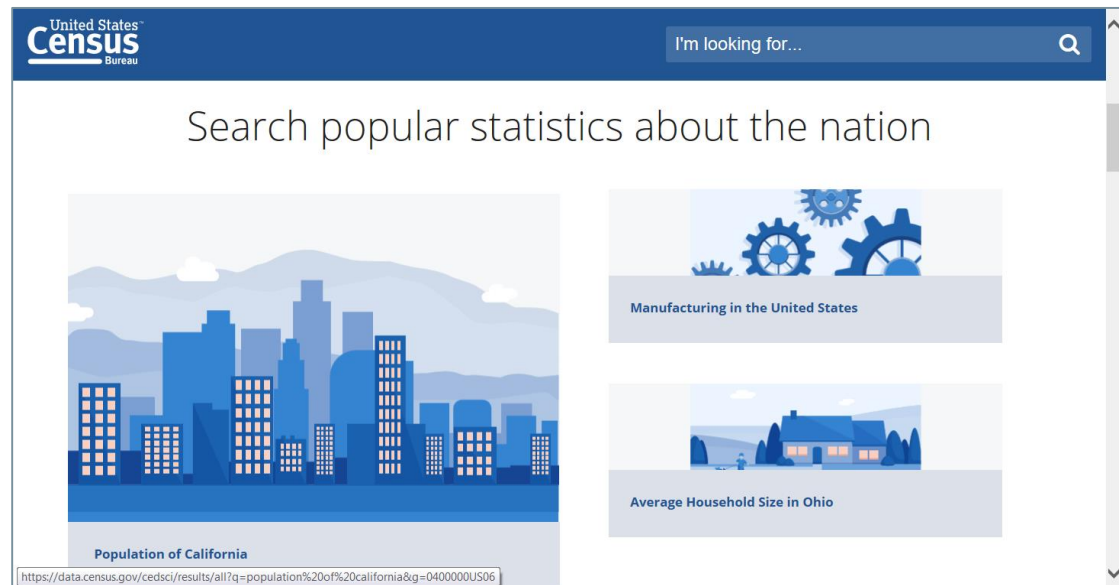
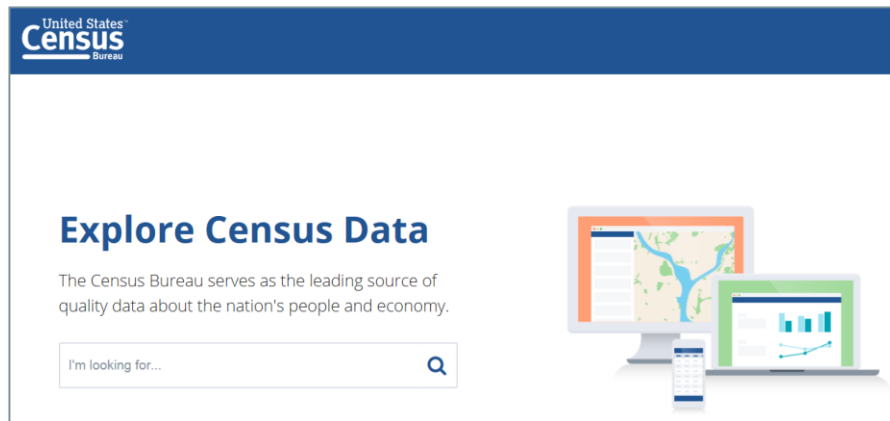
Geographic Coverage for the Economic Census

"X" denotes geographic coverage in the 2017 Economic Census.

Sector	U.S./States	Metro Areas	Counties	Places	ZIP Codes
Mining	X				
Utilities	X	X	X	X	
Construction	X				
Manufacturing	X	X	X	X	
Wholesale Trade	X	X	X	X	
Retail Trade	X	X	X	X	X
Transportation and Warehousing	X	X	X	X	
Information	X	X	X	X	
Finance and Insurance	X	X	X	X	
Real Estate and Rental and Leasing	X	X	X	X	
Professional, Scientific, and Technical Services	X	X	X	X	X
Management of Companies and Enterprises	X				
Administrative and Support and Waste Management and Remediation Services	X	X	X	X	X
Educational Services	X	X	X	X	X
Health Care and Social Assistance	X	X	X	X	X
Arts, Entertainment, and Recreation	X	X	X	X	X
Accommodation and Food Services	X	X	X	X	X
Other Services (Except Public Administration)	X	X	X	X	X

Other Changes for 2017 (cont.)

- New [Data.census.gov](https://data.census.gov) dissemination platform
 - For the 2012 EC, data primarily released on [American FactFinder](https://factfinder.census.gov) (AFF), with selected data released in other tools
 - For the 2017 EC, all data will be released on the new data.census.gov platform (selected data will continue to be released in other tools too)
 - Historical Economic Census data will be accessible on AFF until eventually migrated to new platform
 - Users should familiarize themselves with this new tool and its capabilities



Census Business Builder

Guiding Principles

- Easy to use
- Customer focused
- Provide access to Census data and more
 - USDA & third party
- Leverage existing Census investments
 - Esri, API
- Use latest technology
 - Cloud
- Provide for free

Census Business Builder: *Small Business Edition - 2.5*

Privacy Act Statement | FAQs | Send Feedback

Determine the Best Location for Your Business

1. What type of business do you want to research?
Select the type of business you want to research by either selecting it first from the "Most Popular" categories below (and the detailed list provided) or by using the Type of Business Search. (You must choose one type of business.)

Construction | Food Services | Healthcare
Personal Services | Prof & Biz Services | Retail

2. Where are you considering locating the business?
Select the location you want to research either clicking on the My Location button or by searching for it.

My Location
or
State, County, City/Town, or ZIP Code

Go To Map

Create Report

or help using this tool (including tutorial flyers and FAQs), see the [CBB Home Page](#)
Commerce. Learn more about other Census Bureau data by visiting the [Census Home Page](#)
Release: 2.5 (Build: 4)

Census Business Builder: *Regional Analyst Edition - 2.5*

Privacy Act Statement | FAQs | Send Feedback

Define your region

What is the primary state, county, city/town, or ZIP Code in your region?
Select the primary state, county, city/town, or ZIP Code in your region by either clicking on the My Location button or by searching for it.

My Location
or
State, County, City/Town, or ZIP Code

Powered by the U.S. Census Bureau and Esri. For help using this tool (including tutorial flyers and FAQs), see the [CBB Home Page](#)
© 2017 U.S. Census Bureau, U.S. Department of Commerce. Learn more about other Census Bureau data by visiting the [Census Home Page](#)
Release: 2.5 (Build: 4)

<https://www.census.gov/data/data-tools/cbb.Webinars.html>

CBB Home Page
<https://www.census.gov/data/data-tools/cbb.html>

Key Changes for Release 2.6 (scheduled for August 2019)

- Data
 - Adding the Bureau of Labor Statistics Quarterly Census of Employment and Wages (QCEW) data
 - More recent data than Census has and wages data
- Functionality
 - SBE and RAE
 - Adding the ability to view data from selected programs on a 3rd dimension
 - Employment size, revenue size, or worker age
 - RAE only
 - Adding the ability to build regions via pin drop/radius and free-hand select
 - Adding links from list of area components of region on cover page of Region report to reports for each individual area

Census Business Builder: Small Business Edition - 2.6

Change Your Industry: Food Services, Bars

Change Your Location: Click on the map to select

Select Map Variable: Number of establishments (1st qtr 2019)

Select Your Filter: Not Applied

State: County: City/Town: ZIP Code: Tract

Please Select a Map Variable

Primary Category

- Customers
- Businesses (Annual)
- Businesses (Quarterly)**
- Workforce
- Building Permits
- Consumer Spending
- My Variables

Secondary Category

- Levels
- Level Change
- Percent Change
- Location Quotient

Map Variables

- Number of establishments (1st qtr 2019)
- Employment (Jan 2019)
- Employment (Feb 2019)
- Employment (Mar 2019)

This data variable is already displayed on Map

Select Variable

Close

Est. HERE Garmin, FAO, NOAA, USGS, EPA, NPS

Information may not be available for all industries and areas to protect the privacy of individual companies.
 Includes geo information that you can use to better understand your market. To learn more, see www.census.gov

Summary

LOTS of changes to the Economic Census data products!

- **Geographic area** changes
 - Make sure the boundaries of an area haven't changed before making comparisons
 - Data for newly-qualifying places
- **NAICS** changes
 - Verify comparability for time series
 - Data for emerging nanobiotechnology industry
- **NAPCS** – Makes it easier to compare products and services across industries
- Other changes
 - **Dropped** and **Changed** Miscellaneous Subjects tables – Check web site for details
 - **New Disclosure Rules** (and their impacts)
 - New **Data.census.gov** dissemination platform – Test out the existing beta site

Lots of CBB changes coming too...

Q & A and Thank You!

Contact us at:

Barbara.g.Zamora-appel@census.gov

[\(301\)763-4863](tel:(301)763-4863)

Kayla.curcio@census.gov

[\(301\)763-6490](tel:(301)763-6490)

