

# CAREERS IN STEM

SCIENCE, TECHNOLOGY, ENGINEERING, & MATH

## WE ARE YOUR DOL



Department  
of Labor

### DO YOU WANT TO MAKE THE WORLD A BETTER PLACE TO LIVE?

If you are concerned about changes in the environment, creating better medicines and building new gadgets to make everyday life easier, consider a Science, Technology, Engineering and Math (STEM) education. A STEM education can give you the tools to help solve some of today's most perplexing problems.

### DO YOU WONDER WHAT PUTS THE THRILL IN A ROLLER COASTER?

It takes both design and engineering skills to develop a thrill ride. If you are curious about how things work and are a creative and original thinker, a STEM career could be for you.

### DO YOU IMAGINE SOLVING CRIMES USING THE LATEST TECHNOLOGY?

You could be a Forensic Science Technician in your local area or travel the world tracking the latest infectious disease. Professionals in STEM careers protect and serve people around the world.



There are over 240 STEM occupations with new ones created every year. You can find more STEM occupations at [onetonline.org/find/stem](http://onetonline.org/find/stem)

For more information about STEM occupations in your region contact your local Labor Market Analyst at [dol.ny.gov/labor-market-analysts](http://dol.ny.gov/labor-market-analysts)

## Get Started



Take classes in Science, Technology, Engineering and Math to learn about exciting STEM career opportunities



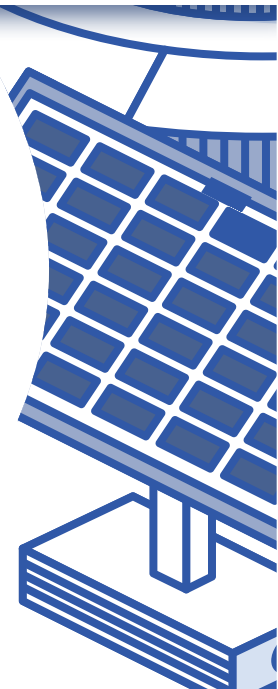
Talk to people who have the STEM jobs you like and learn how they got started



Join math and science clubs and participate in activities that build STEM knowledge and interest



Explore careers, job skills, wages and more at [careerzone.ny.gov](http://careerzone.ny.gov) (for grades 6-12) and [jobzone.ny.gov](http://jobzone.ny.gov) (for adults)



The median wage of Capital Region STEM occupations is \$80,310 a year, which is 58 percent higher than the median annual wage of \$50,860 for all workers in the region.

## STEM CAREERS: CAPITAL REGION

OCCUPATION	MEDIAN ANNUAL WAGE*
AUTOMOTIVE SERVICE TECHNICIANS AND MECHANICS	\$50,245
BIOLOGICAL TECHNICIANS	\$66,239
BUS AND TRUCK MECHANICS AND DIESEL ENGINE SPECIALISTS	\$53,548
CIVIL ENGINEERS	\$105,420
COMPUTER AND INFORMATION SYSTEMS MANAGERS	\$138,970
COMPUTER NETWORK SUPPORT SPECIALISTS	\$67,385
COMPUTER USER SUPPORT SPECIALISTS	\$57,832
ELECTRICAL AND ELECTRONIC ENGINEERING TECHNICIANS	\$65,008
ELECTRICAL ENGINEERS	\$108,045
FOOD SCIENTISTS AND TECHNOLOGISTS	\$83,973
HEATING, AIR CONDITIONING, AND REFRIGERATION MECHANICS AND INSTALLERS	\$63,763
INDUSTRIAL ENGINEERS	\$105,095
LICENSED PRACTICAL AND LICENSED VOCATIONAL NURSES	\$51,811
LIFE, PHYSICAL, AND SOCIAL SCIENCE TECHNICIANS, ALL OTHER	\$52,135
MECHANICAL ENGINEERS	\$108,561
MEDICAL AND HEALTH SERVICES MANAGERS	\$107,740
MIXING AND BLENDING MACHINE SETTERS, OPERATORS, AND TENDERS	\$57,319
OCCUPATIONAL HEALTH AND SAFETY SPECIALISTS	\$83,109
PHARMACISTS	\$131,979
REGISTERED NURSES	\$83,410
SOFTWARE DEVELOPERS	\$109,445
SPEECH-LANGUAGE PATHOLOGISTS	\$86,202
TELECOMMUNICATIONS EQUIPMENT INSTALLERS AND REPAIRERS, EXCEPT LINE INSTALLERS	\$68,713
VETERINARY TECHNOLOGISTS AND TECHNICIANS	\$48,435
WELDERS, CUTTERS, SOLDERERS, AND BRAZERS	\$53,123

\*Half the workers were paid wages above and half were paid wages below this value