

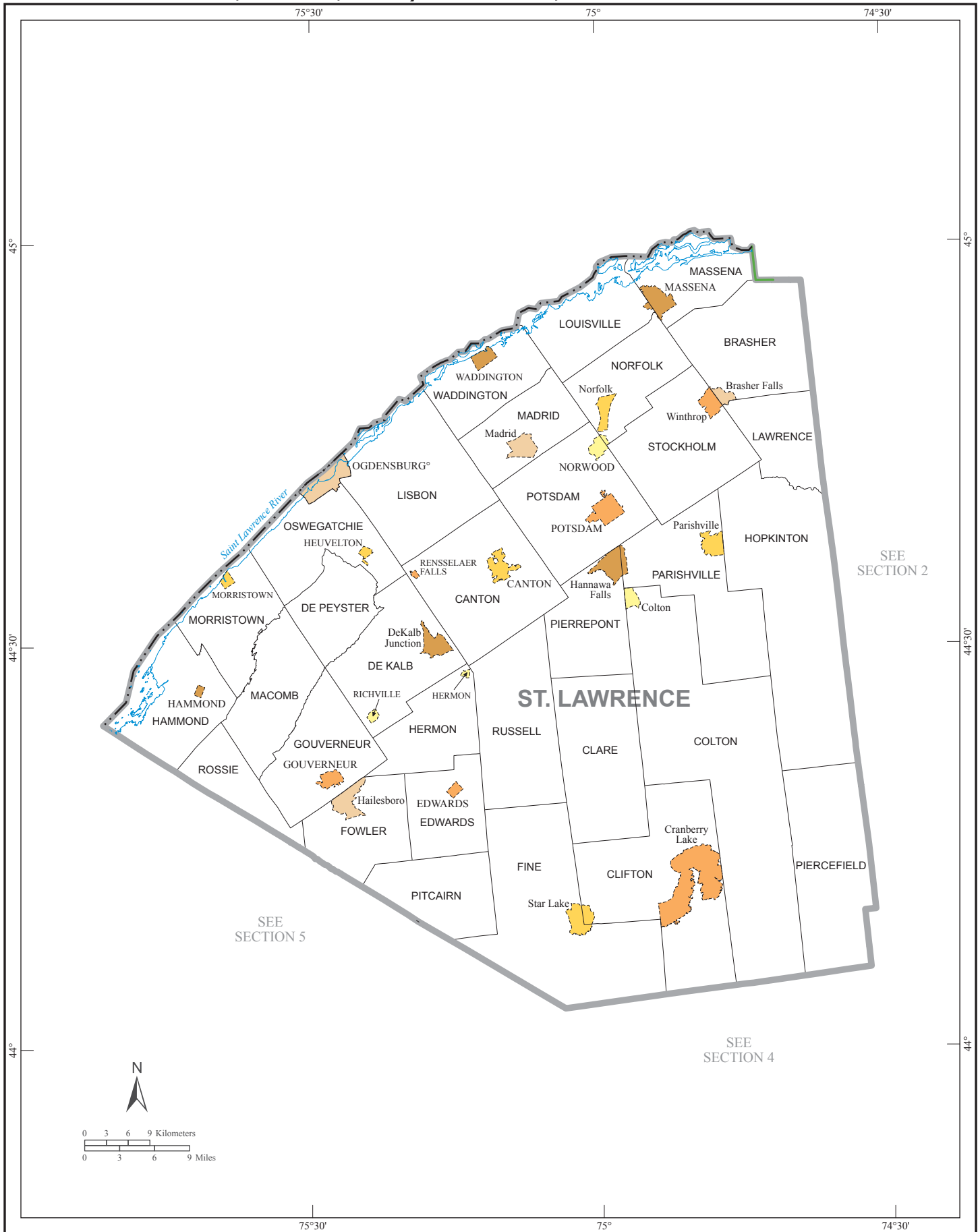
Geographic Areas Reference Map Legend, Section Locator, and Location Index

County Location Index

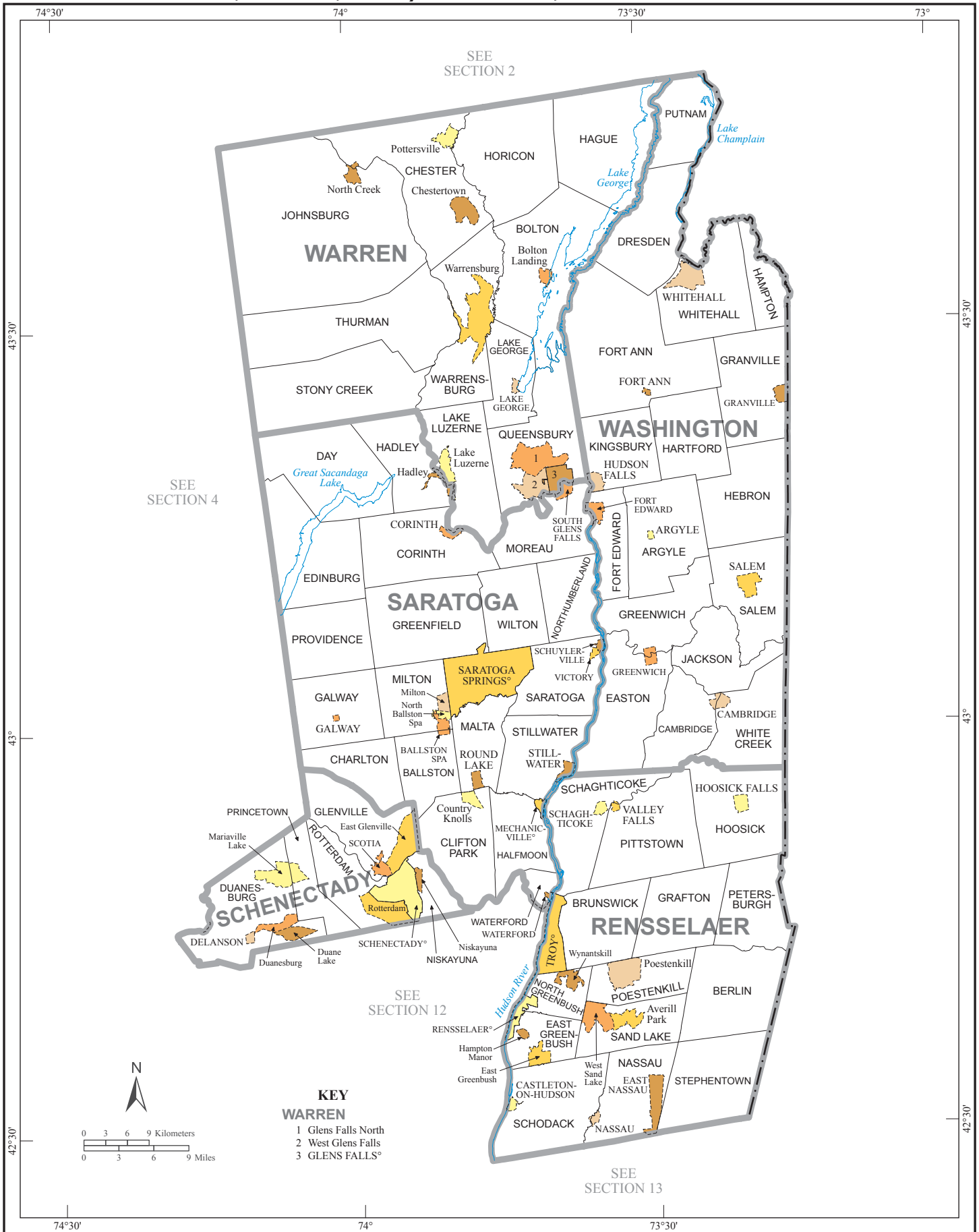
This list presents the map section numbers for each county in the state.
Map section numbers refer to the geographic areas reference maps only.

COUNTY	MAP SEC	COUNTY	MAP SEC
Albany	12	Tioga	11
Allegany	10	Tompkins	11
Bronx	14	Ulster	13
Broome	11	Warren	3
Cattaraugus	9	Washington	3
Cayuga	7	Wayne	7
Chautauqua	9	Westchester	14
Chemung	11	Wyoming	10
Chenango	11	Yates	7
Clinton	2		
Columbia	13		
Cortland	11		
Delaware	12		
Dutchess	13		
Erie	9		
Essex	2		
Franklin	2		
Fulton	4		
Genesee	8		
Greene	13		
Hamilton	4		
Herkimer	4		
Jefferson	5		
Kings	14		
Lewis	5		
Livingston	10		
Madison	6		
Monroe	8		
Montgomery	4		
Nassau	14		
New York	14		
Niagara	8		
Oneida	6		
Onondaga	6		
Ontario	7		
Orange	14		
Orleans	8		
Oswego	6		
Otsego	12		
Putnam	14		
Queens	14		
Rensselaer	3		
Richmond	14		
Rockland	14		
Saratoga	3		
Schenectady	3		
Schoharie	12		
Schuyler	10		
Seneca	7		
St. Lawrence	1		
Steuben	10		
Suffolk	15		
Sullivan	13		

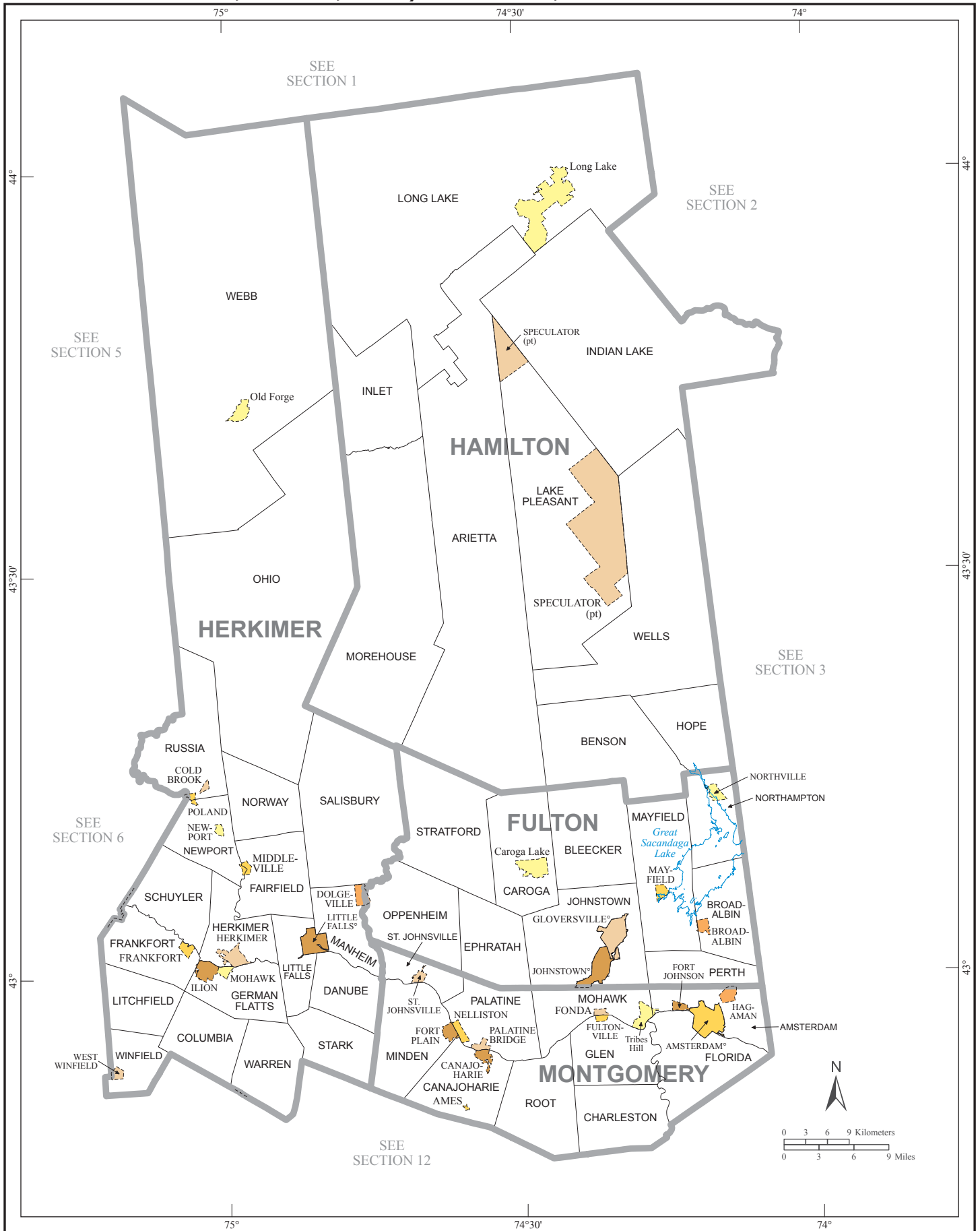
American Indian Areas, Counties, County Subdivisions, and Places - Section 1



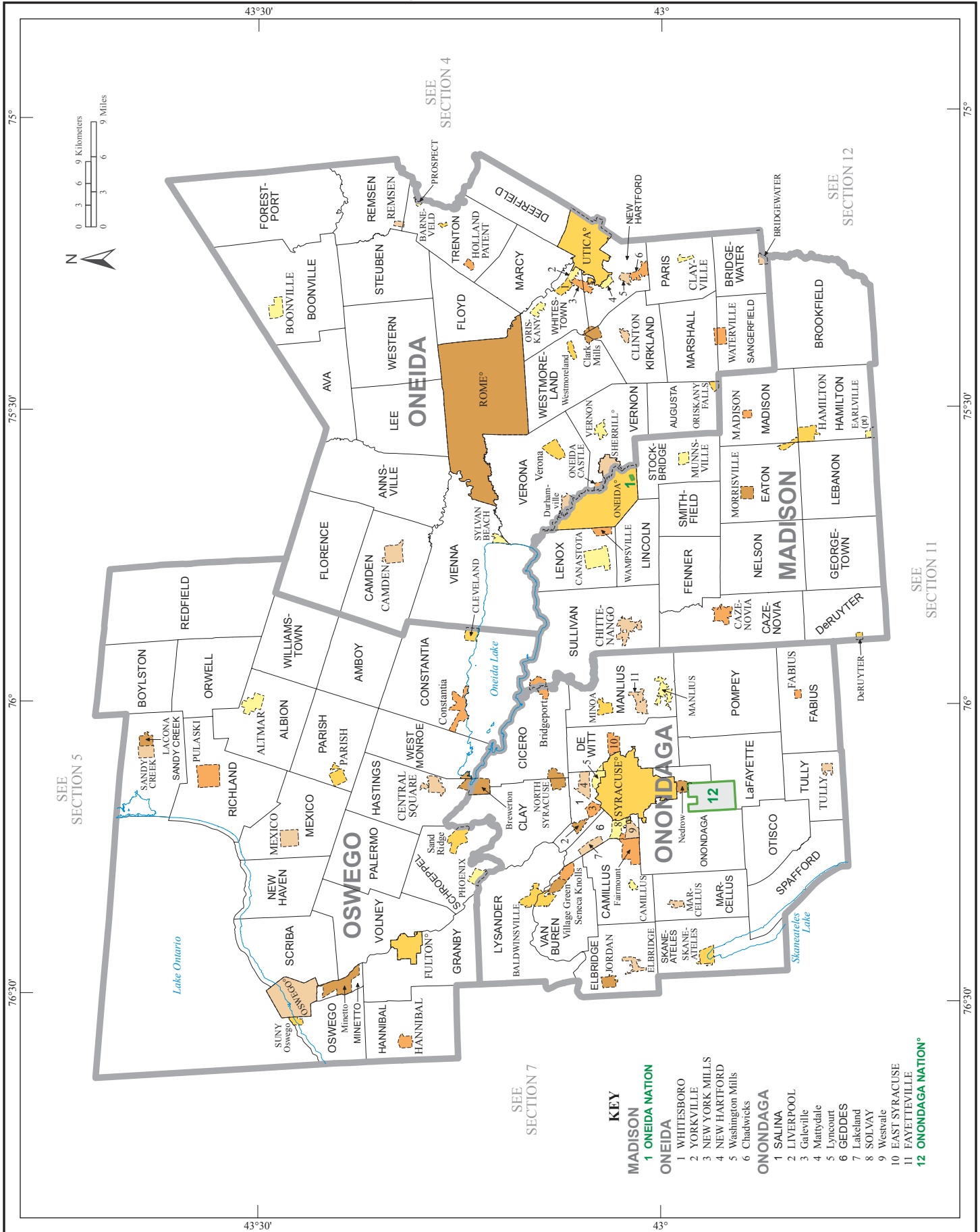
American Indian Areas, Counties, County Subdivisions, and Places - Section 3



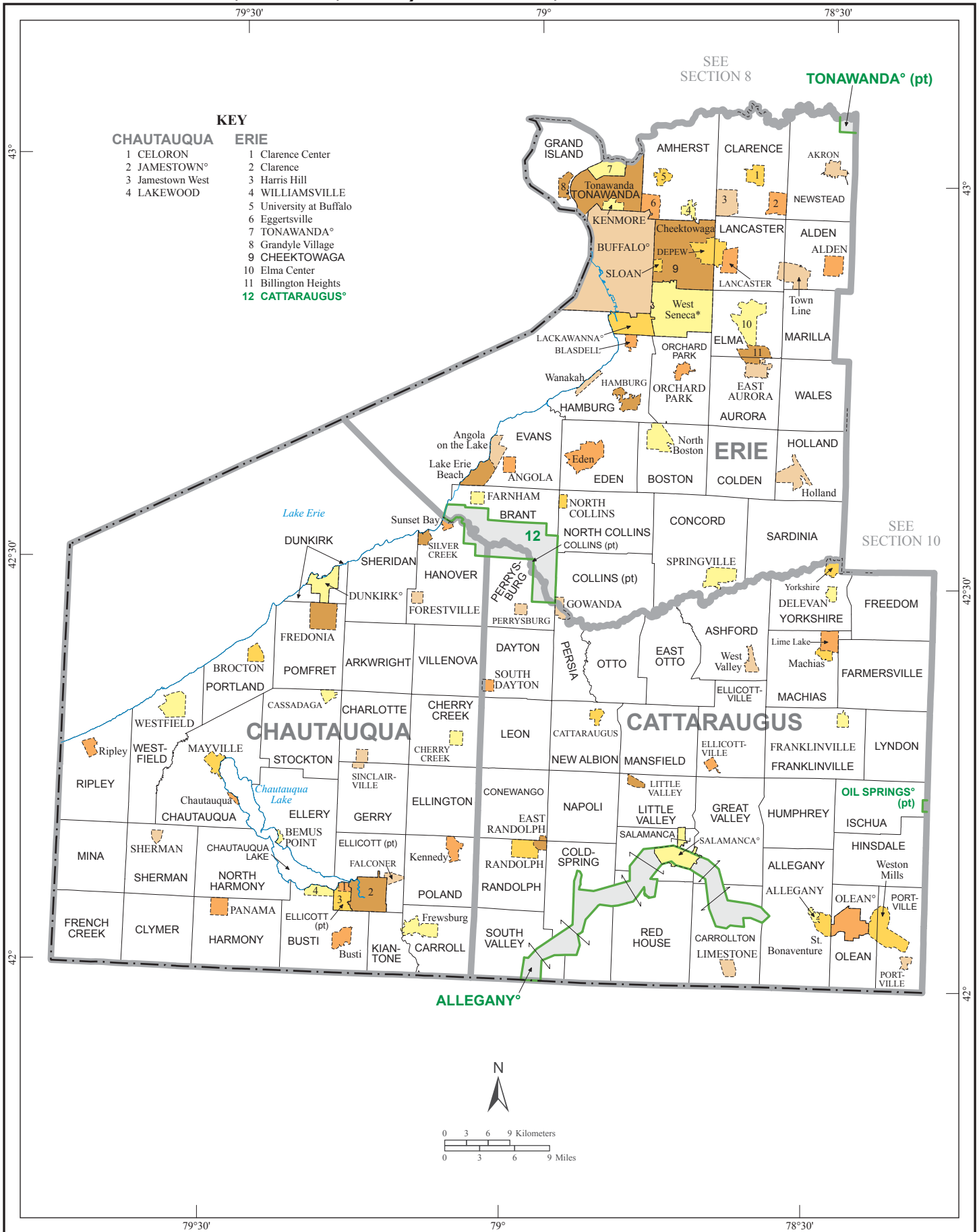
American Indian Areas, Counties, County Subdivisions, and Places - Section 4



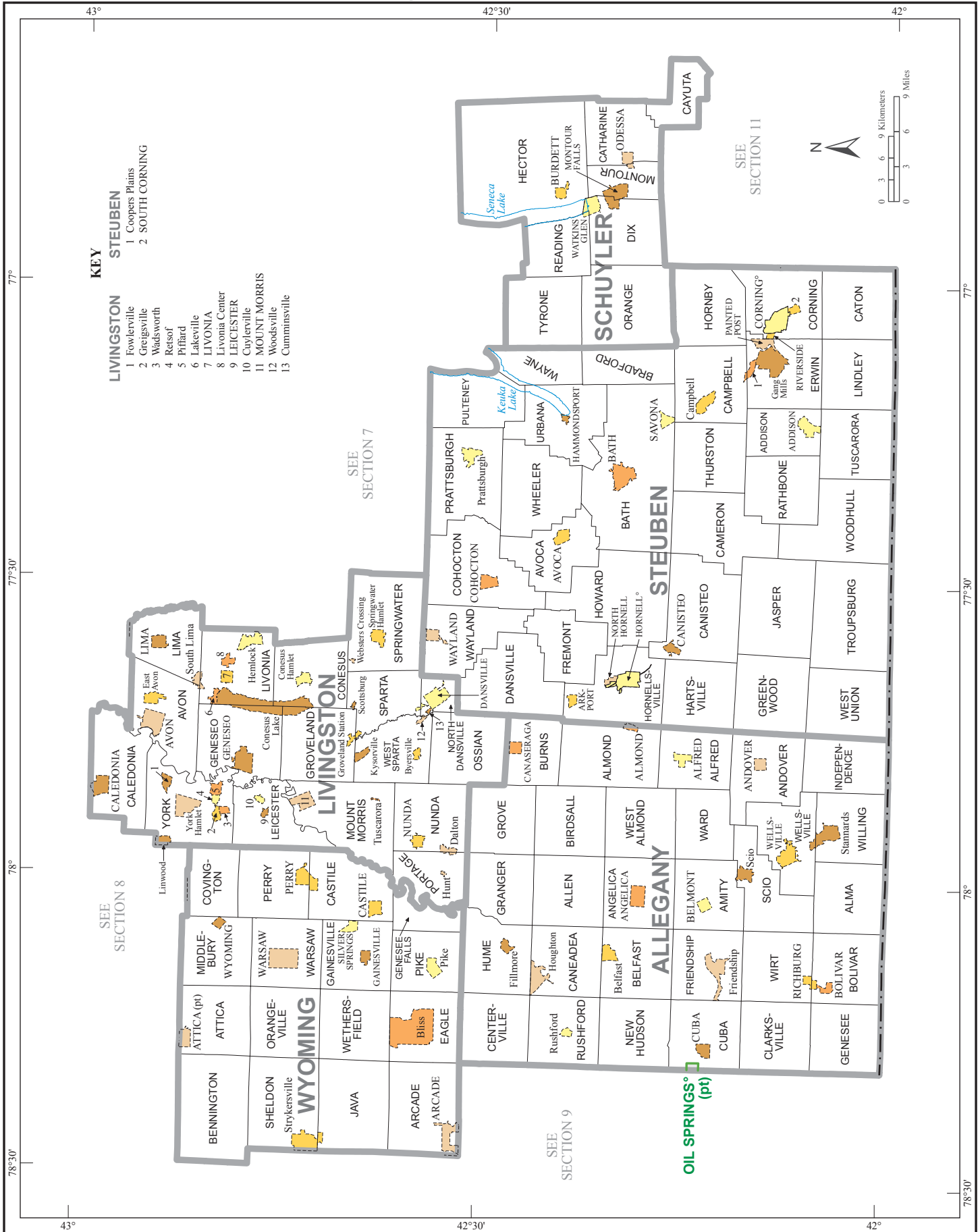
American Indian Areas, Counties, County Subdivisions, and Places - Section 6



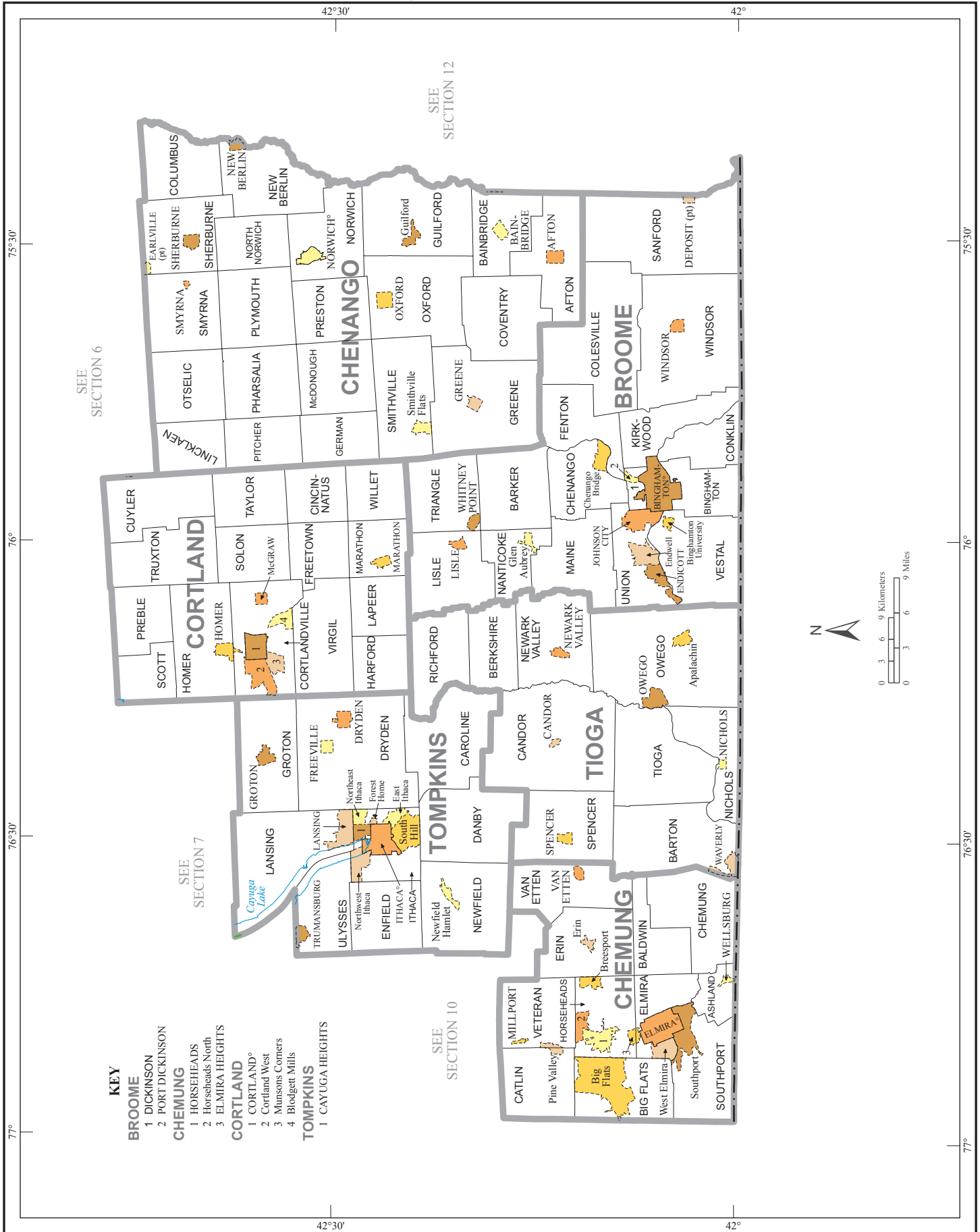
American Indian Areas, Counties, County Subdivisions, and Places - Section 9



American Indian Areas, Counties, County Subdivisions, and Places - Section 10

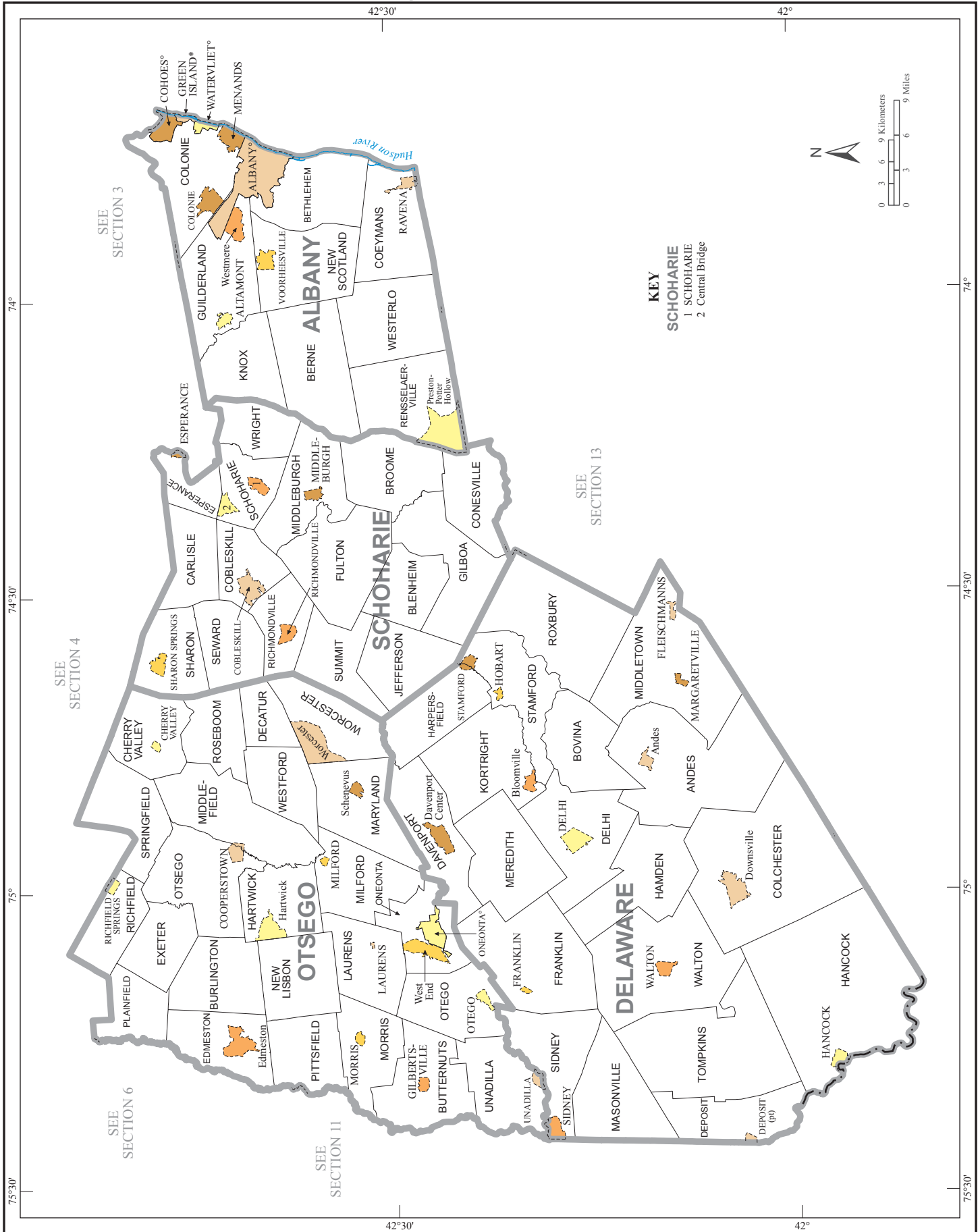


American Indian Areas, Counties, County Subdivisions, and Places - Section 11

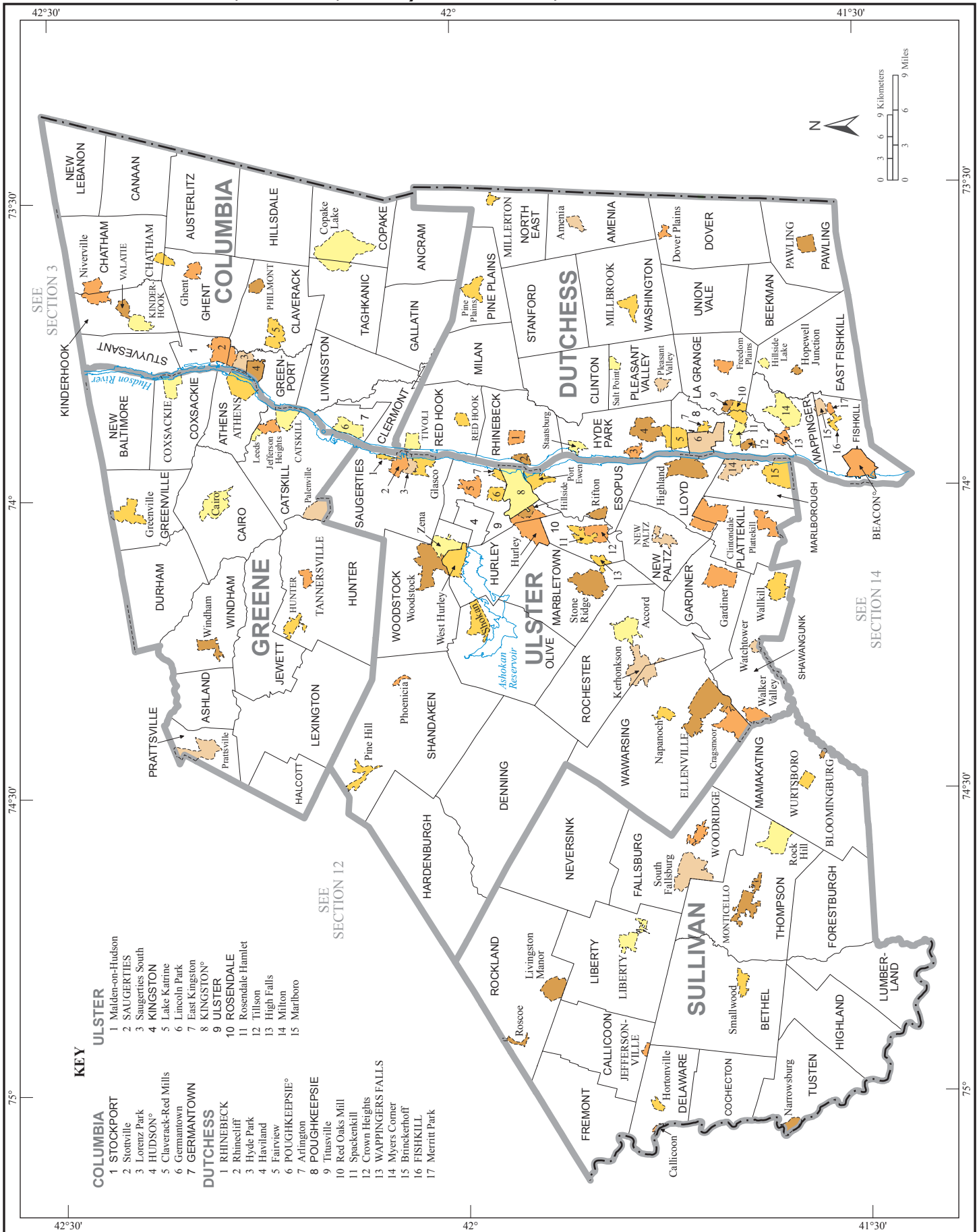


- KEY**
- BROOME**
 - 1 DICKINSON
 - 2 PORT DICKINSON
 - CHEMUNG**
 - 1 HORSEHEADS
 - 2 Horseheads North
 - 3 ELMIRA HEIGHTS
 - CORTLAND**
 - 1 CORTLAND
 - 2 Cortland West
 - 3 Munsons Corners
 - 4 Budget Mills
 - TOMPKINS**
 - 1 CAYUGA HEIGHTS

American Indian Areas, Counties, County Subdivisions, and Places - Section 12

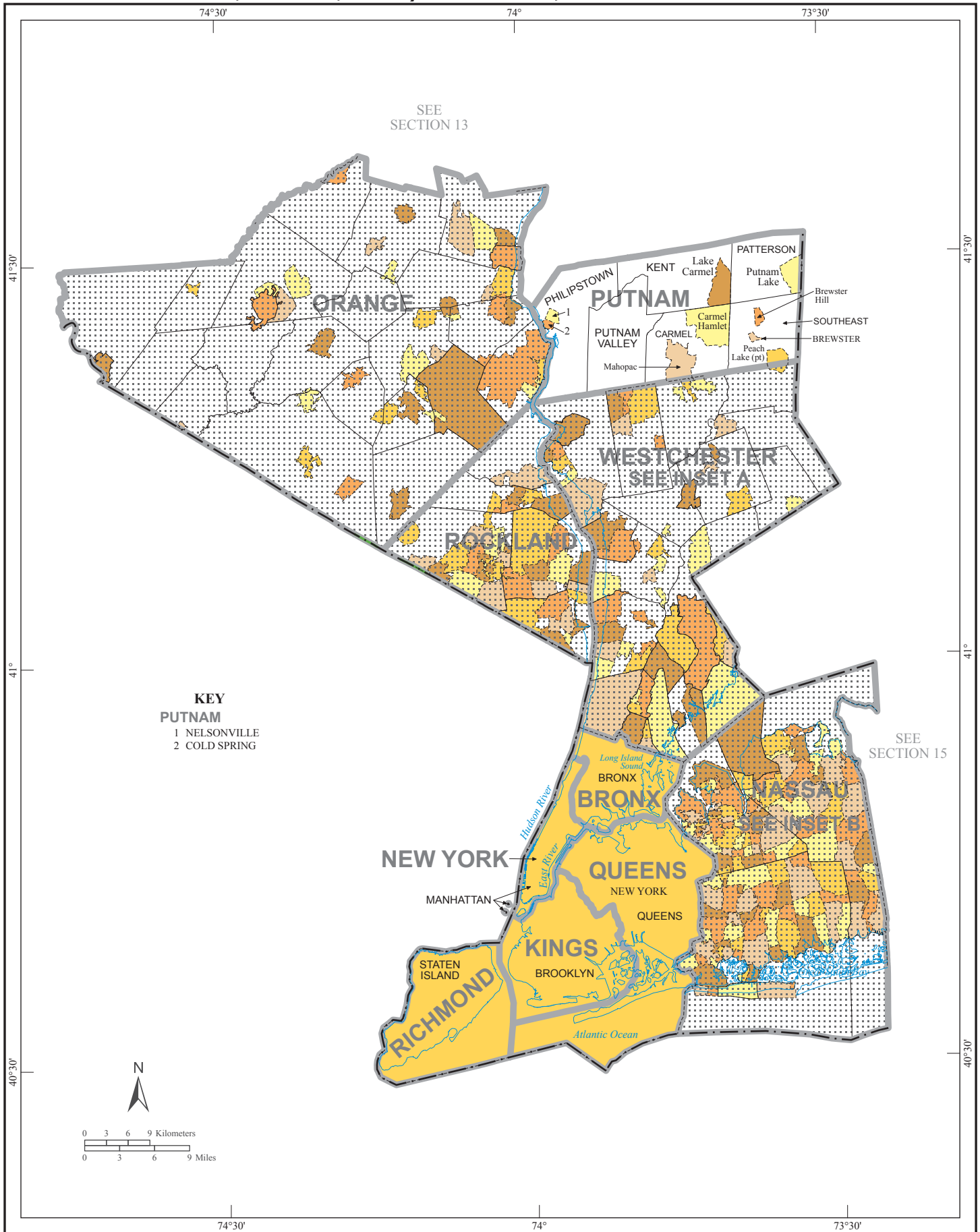


American Indian Areas, Counties, County Subdivisions, and Places - Section 13

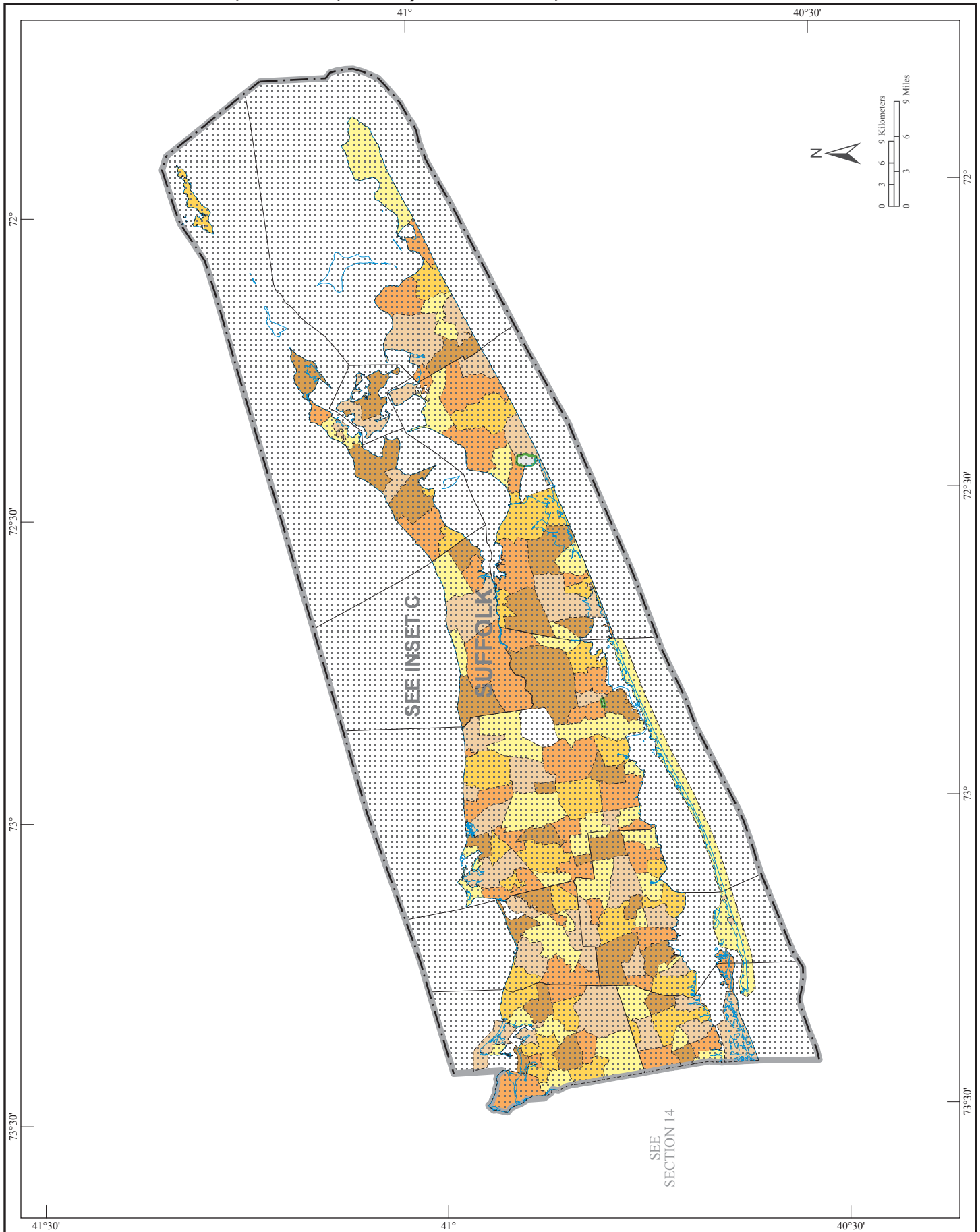


- KEY**
- COLUMBIA**
 - 1 Maiden-on-Hudson
 - 2 STOCKPORT
 - 3 SAUGERTIES
 - 4 HUDSON°
 - 5 Claverack-Red Mills
 - 6 Germanstown
 - 7 GERMANTOWN
 - DUTCHESS**
 - 1 RHINEBECK
 - 2 Rhinecliff
 - 3 Hyde Park
 - 4 Haverland
 - 5 Fairview
 - 6 POUGHKEEPSIE°
 - 7 Arlington
 - 8 POUGHKEEPSIE
 - 9 Tinsville
 - 10 Red Oaks Mill
 - 11 Spackenkill
 - 12 Crown Heights
 - 13 WAPPINGERS FALLS
 - 14 Myers Corner
 - 15 Brinckerhoff
 - 16 FISHKILL
 - 17 Merritt Park

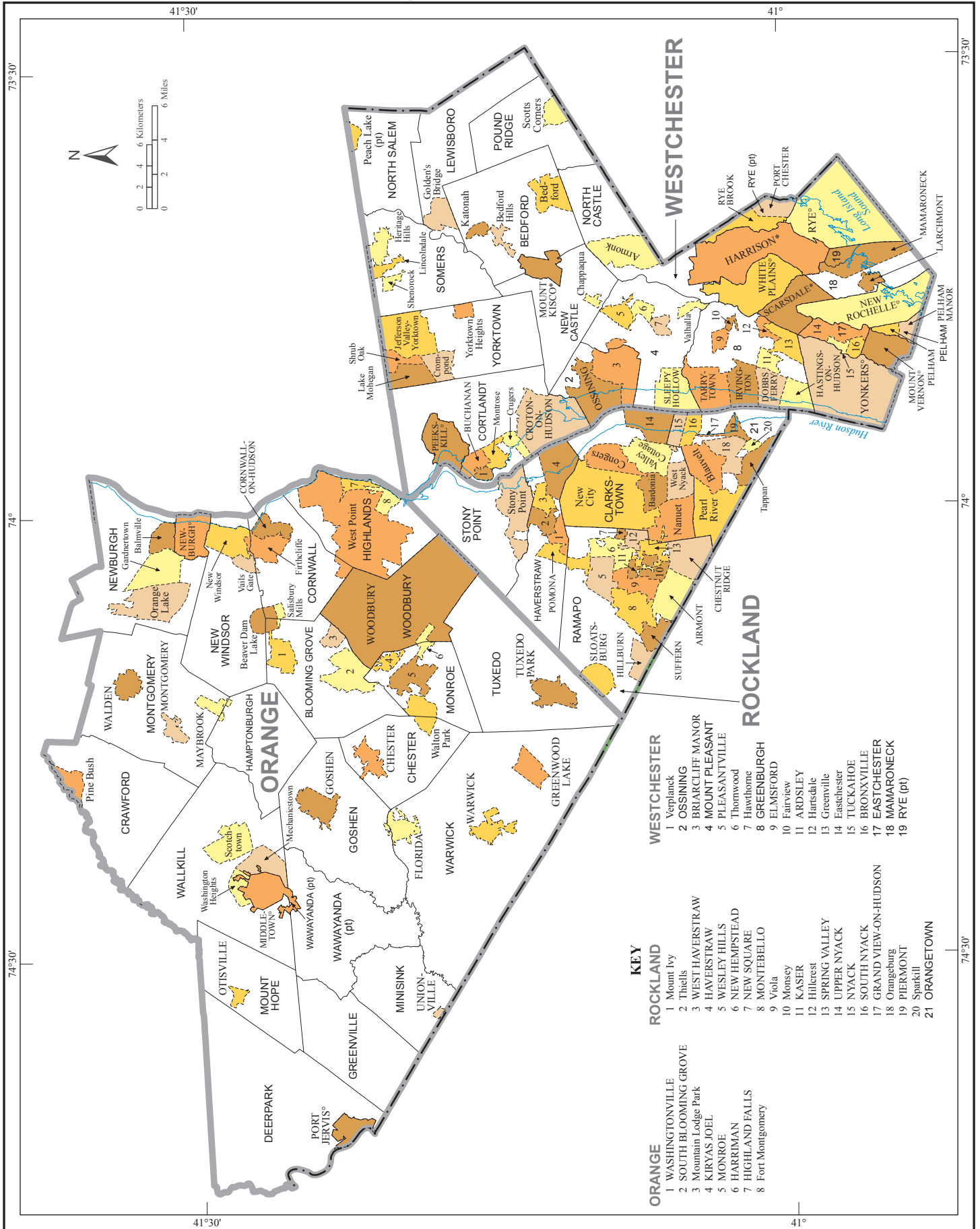
American Indian Areas, Counties, County Subdivisions, and Places - Section 14



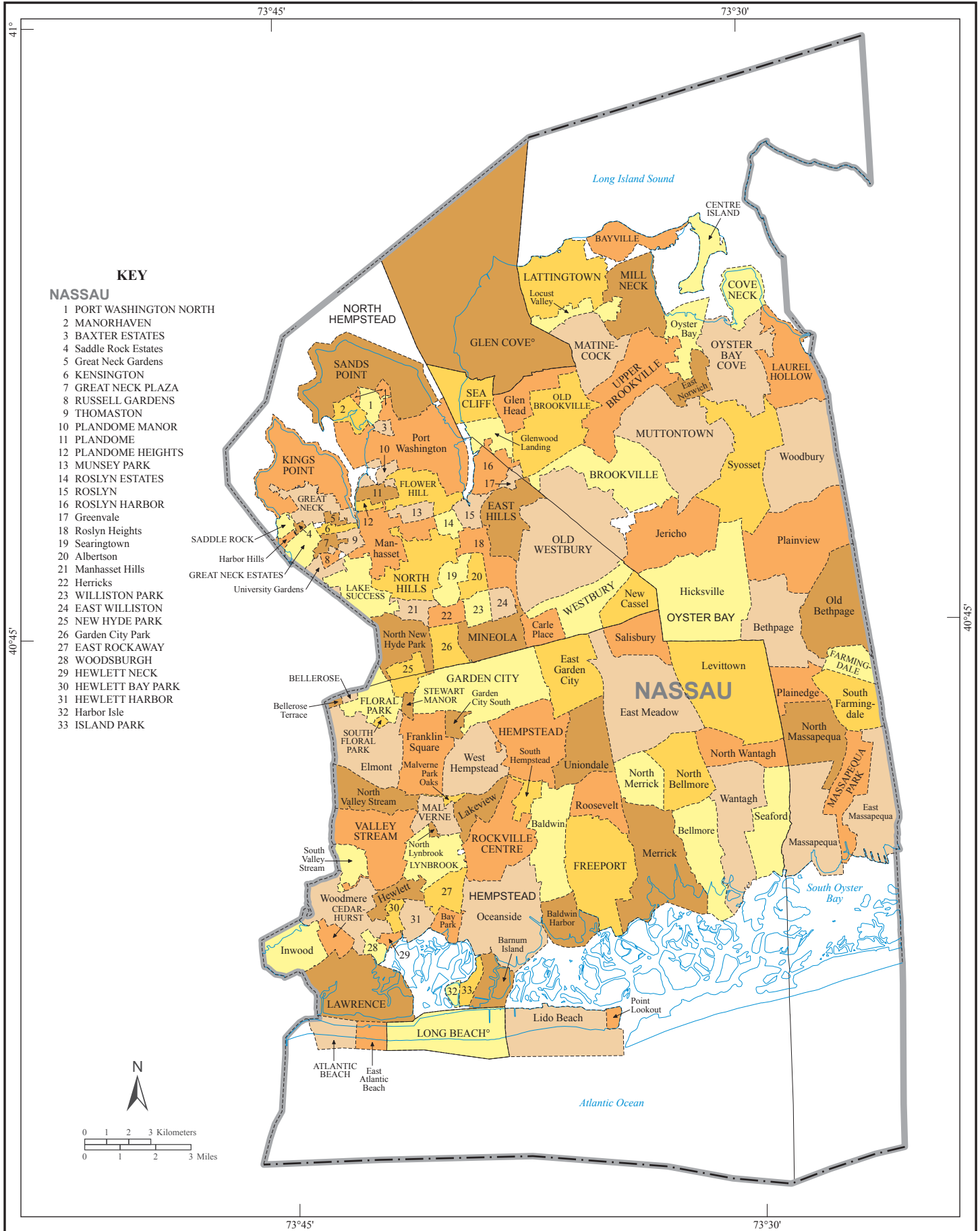
American Indian Areas, Counties, County Subdivisions, and Places - Section 15



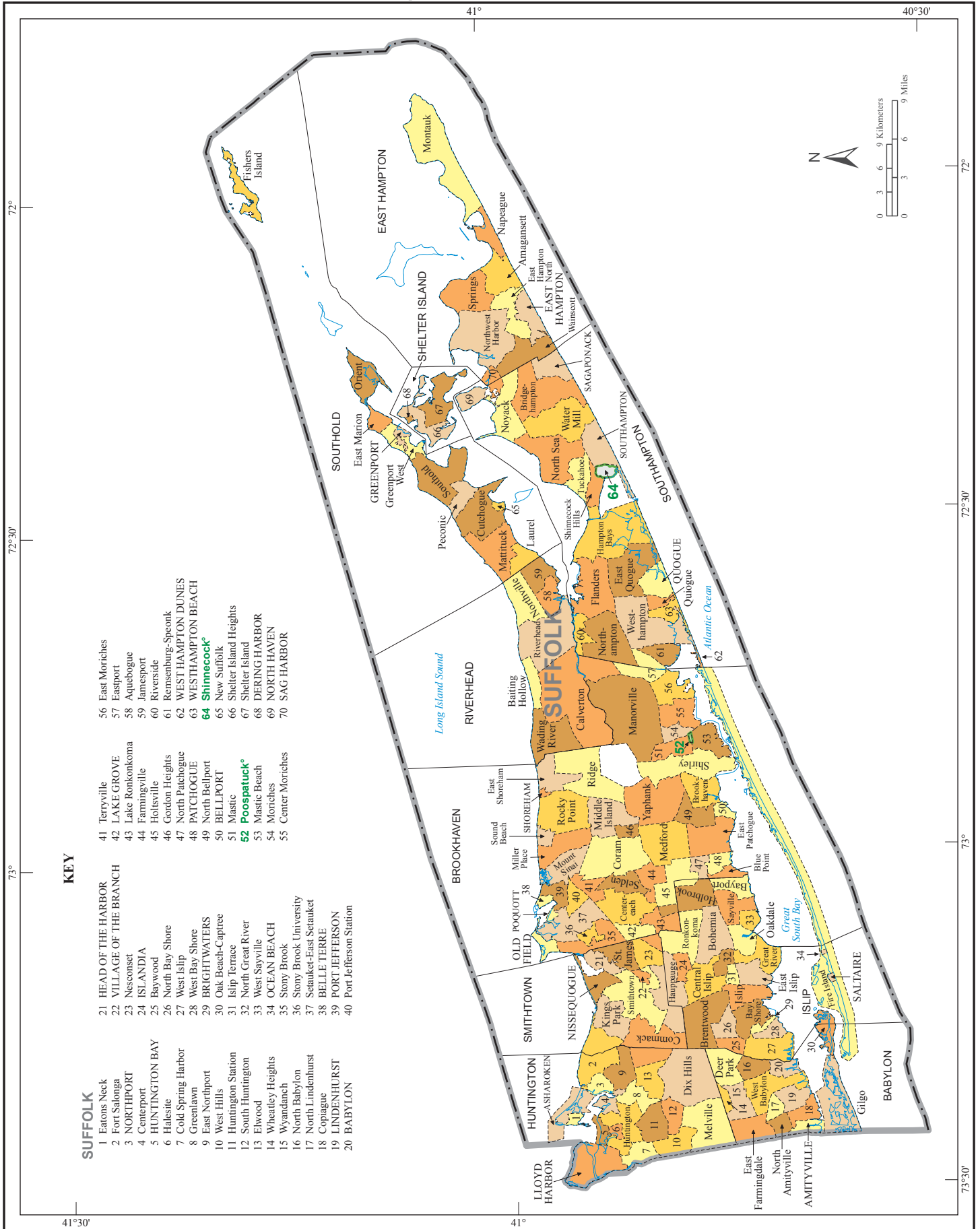
American Indian Areas, Counties, County Subdivisions, and Places - Inset A



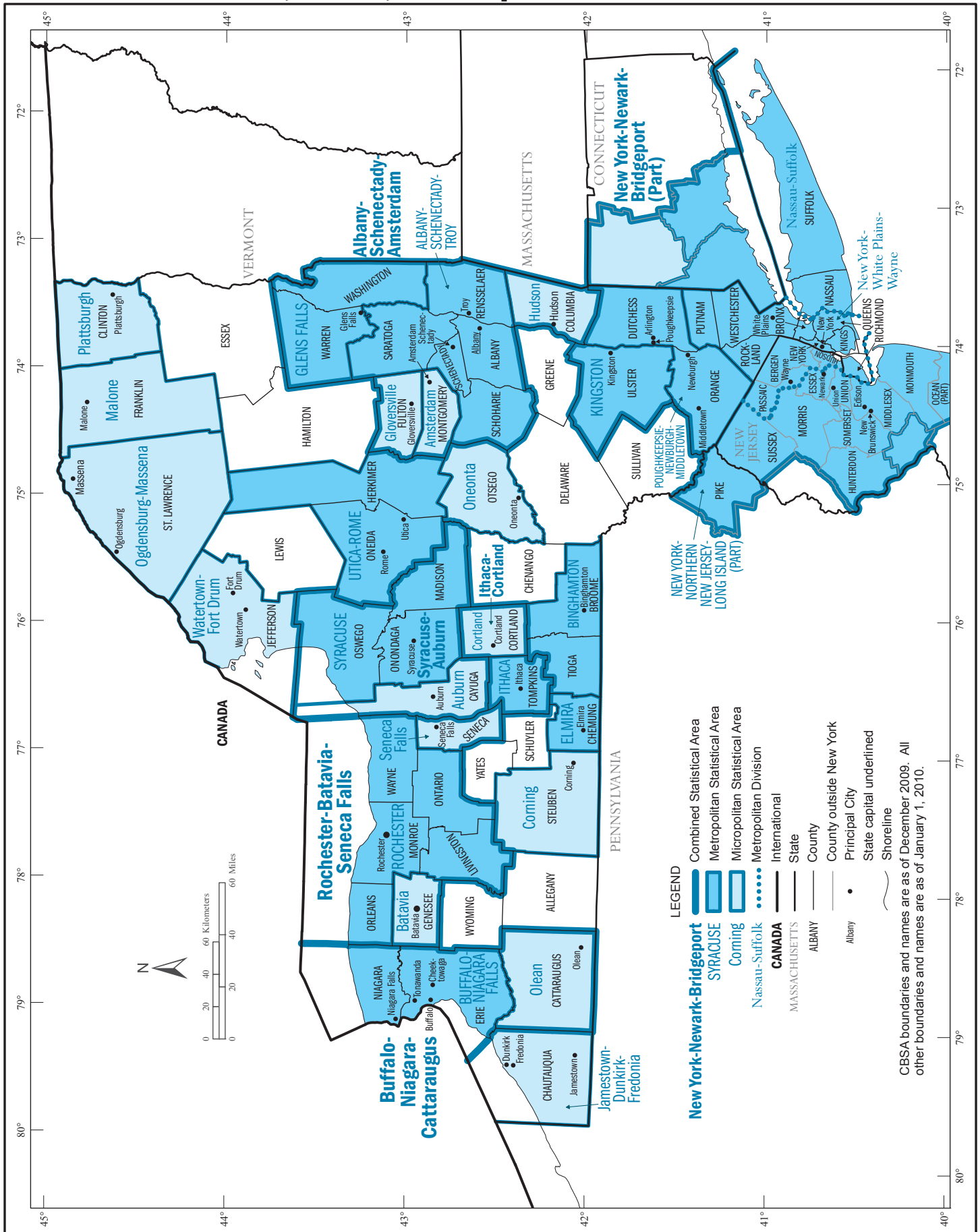
American Indian Areas, Counties, County Subdivisions, and Places - Inset B



American Indian Areas, Counties, County Subdivisions, and Places - Inset C



Core Based Statistical Areas, Counties, and Principal Cities



CBSA boundaries and names are as of December 2009. All other boundaries and names are as of January 1, 2010.