

2020 Participant Statistical Areas Program (PSAP)

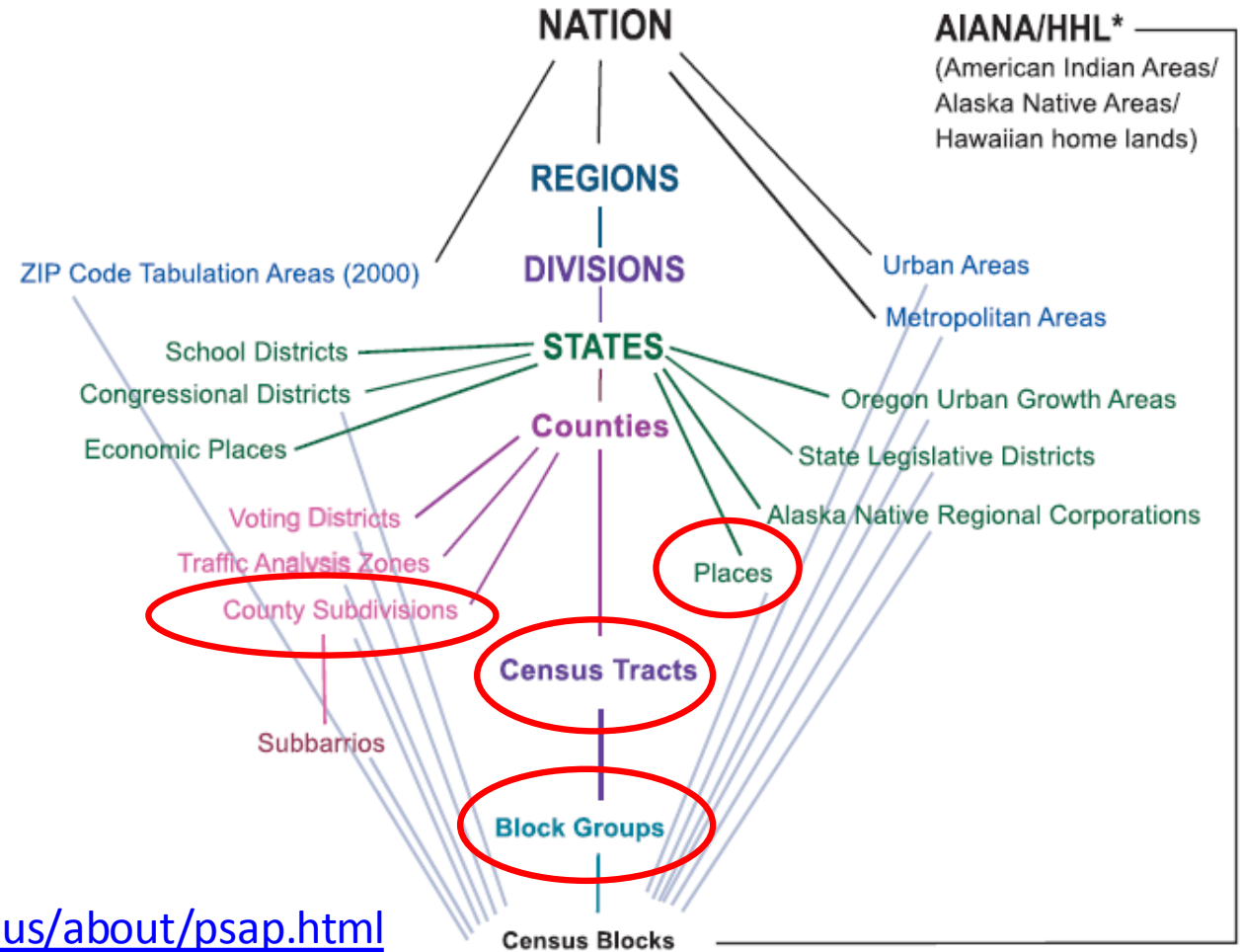
2018 New York State Data Center Affiliates Meeting
13 September 2018

Web Adams, Geography Division
U.S. Census Bureau



Participant Statistical Areas Program (PSAP)

- Once a decade, voluntary opportunity for invited participants to:
 - Review and update selected Census Bureau statistical geography.
 - Coordinate with interested stakeholders.



<https://www.census.gov/programs-surveys/decennial-census/about/psap.html>



Statistical Geographies

- Standard statistical geographies.
 - Census tracts.
 - Block groups.
 - Census designated places (CDPs).
 - Census county divisions (CCDs) in select states.
- Tribal statistical geographies.
 - Tribal census tracts.
 - Tribal block groups.
 - Census designated places (CDPs).
 - Alaska Native village statistical areas (ANVSAs).
 - Oklahoma tribal statistical areas (OTSAs).
 - OTSA tribal subdivisions.
 - Tribal designated statistical areas (TDSAs).
 - State designated tribal statistical areas (SDTSAs).



Importance of PSAP Participation

- Data needs not always met by legal areas alone.
- Statistical geography can help provide data.
 - For example, CDPs are used to create boundaries for a concentration of population where no legal boundaries exist.
 - Cities or communities without legal boundaries.
 - Neighborhoods.
 - State-recognized tribal areas.
- Data for these statistical geographies are often used as criteria in grant applications or programs (e.g., Opportunity Zones Program).



New for 2020 Census PSAP

- Tribal Statistical Areas Program (TSAP) now part of 2020 PSAP.
- Participants receive *proposed* 2020 Census statistical areas.
- Geographic Update Partnership Software (GUPS).
- Secure Web Incoming Module (SWIM).



2020 Census PSAP Criteria

- There are no substantial changes to PSAP criteria from 2010.
- The final criteria Federal Register Notices for census tracts and block groups were approved on 9/6/2018.
- Tribal criteria have not changed for 2020.
- Statistical geographies are recognizable in:
 - Concept and purpose.
 - Coding and naming conventions.
 - Types of boundary features permitted
- More information is available on the PSAP Web site and in the PSAP Information Guide.



Invitation Phase

- The Census Bureau mailed Invitation Phase packets in **August/September 2018** to:
 - Federally recognized tribes.
 - Tribal-designated statistical areas.
 - State recognized tribes.
 - Alaska Native Villages.
 - Oklahoma Tribal Statistical Areas.
 - Regional Planning Associations.
 - Councils of Governments.
 - Counties.
 - State Data Centers.
 - Puerto Rico



Invitation Phase

- The Census Bureau is processing registrations now.
- The Census Bureau will mail reminder letters – **September/October 2018.**
- Regional Geographers will assist with non-response follow-up to increase registration.
- **October 31, 2018 is the registration deadline.**



Delineation Phase

- Census Bureau will finalize the PSAP universe – **November through December 2018.**
- Census Bureau will create and distribute materials to participants – **January 2019.**
- Registered participants will have the following options:
 - Accept the Census Bureau’s 2020 Census proposed statistical areas defined during PreSAP.
 - Update the 2020 Census proposed statistical areas.
 - Use the 2010 Census statistical area geography as a base to make updates.
- Participants will have 120 days from receipt of their materials to submit updates.
- The Census Bureau will mail a Delineation Phase close-out letter - **July 2019.**

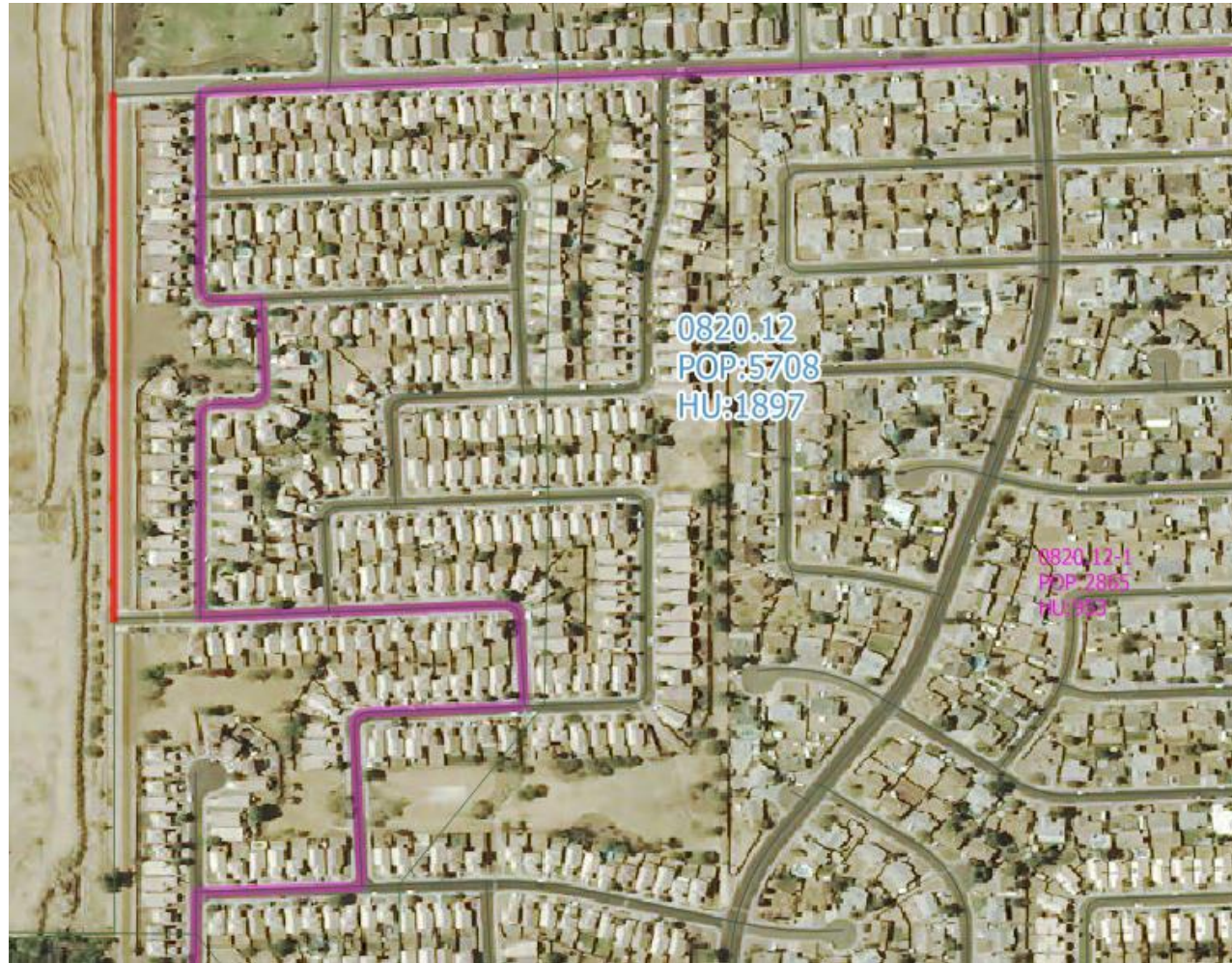


Census Tracts

- Thresholds:
 - Minimum: 1,200 population, 480 HU.
 - Maximum: 8,000 population, 3,200 HU.
 - OPTIMUM: 4,000 population, 1,600 HU.
- Use 2010 Census population counts for tract review in most cases.
 - HU counts for seasonal communities.
- Maintain existing tract boundaries when possible.



2020 Pre-SAP Census Tract Review



Tract 0820.12: A tract in Maricopa County, AZ is an example of where using legal boundaries is preferred to using visible features to define statistical boundaries.

Red: Incorporated place boundary
Purple: Census tract boundary

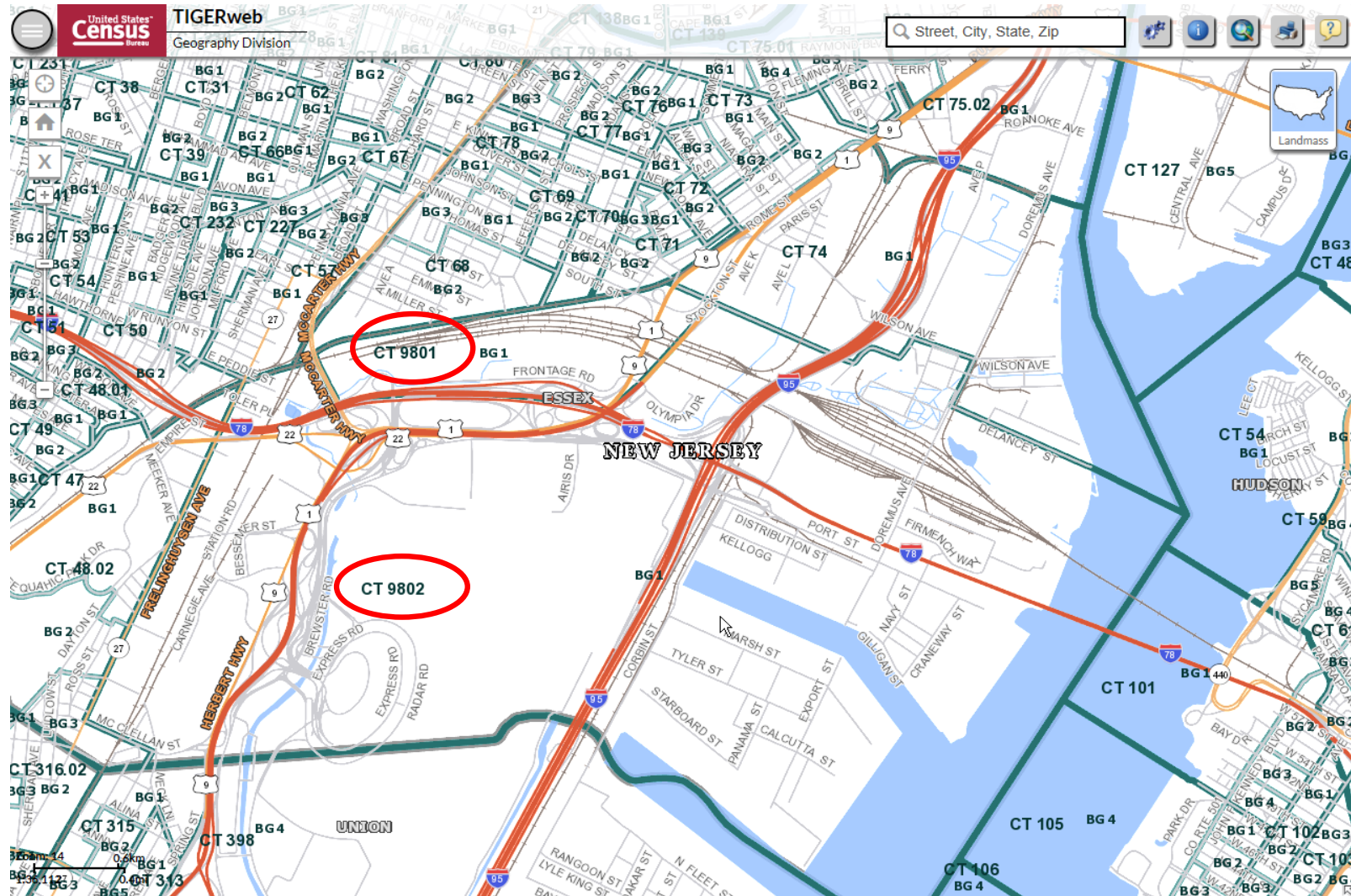


Special Use Census Tracts

- Uses:
 - Characterize unique populations (prisons, universities).
 - Denote nonresidential areas (large parks, major airports).
 - Define tracts encompassing concentrations of employment.
- Thresholds:
 - Area measurement: At least comparable in land area to surrounding census tracts.
 - Employment: Suggested minimum of 1,200 workers or jobs.



Special Use Census Tracts





Census Block Groups

- Standard Block Group Thresholds:
 - Minimum: 600 population, 240 HU.
 - Maximum: 3,000 population, 1,200 HU.
- Special Use Block Group Thresholds:
 - Area: At least comparable in land area to surrounding block groups.
 - Population: None (or very little), or must be within standard BG thresholds.
- Use 2010 Census population counts for BG review in most cases.
 - HU counts for seasonal communities.
 - Local population/HU estimates may be used, esp. in high growth areas.

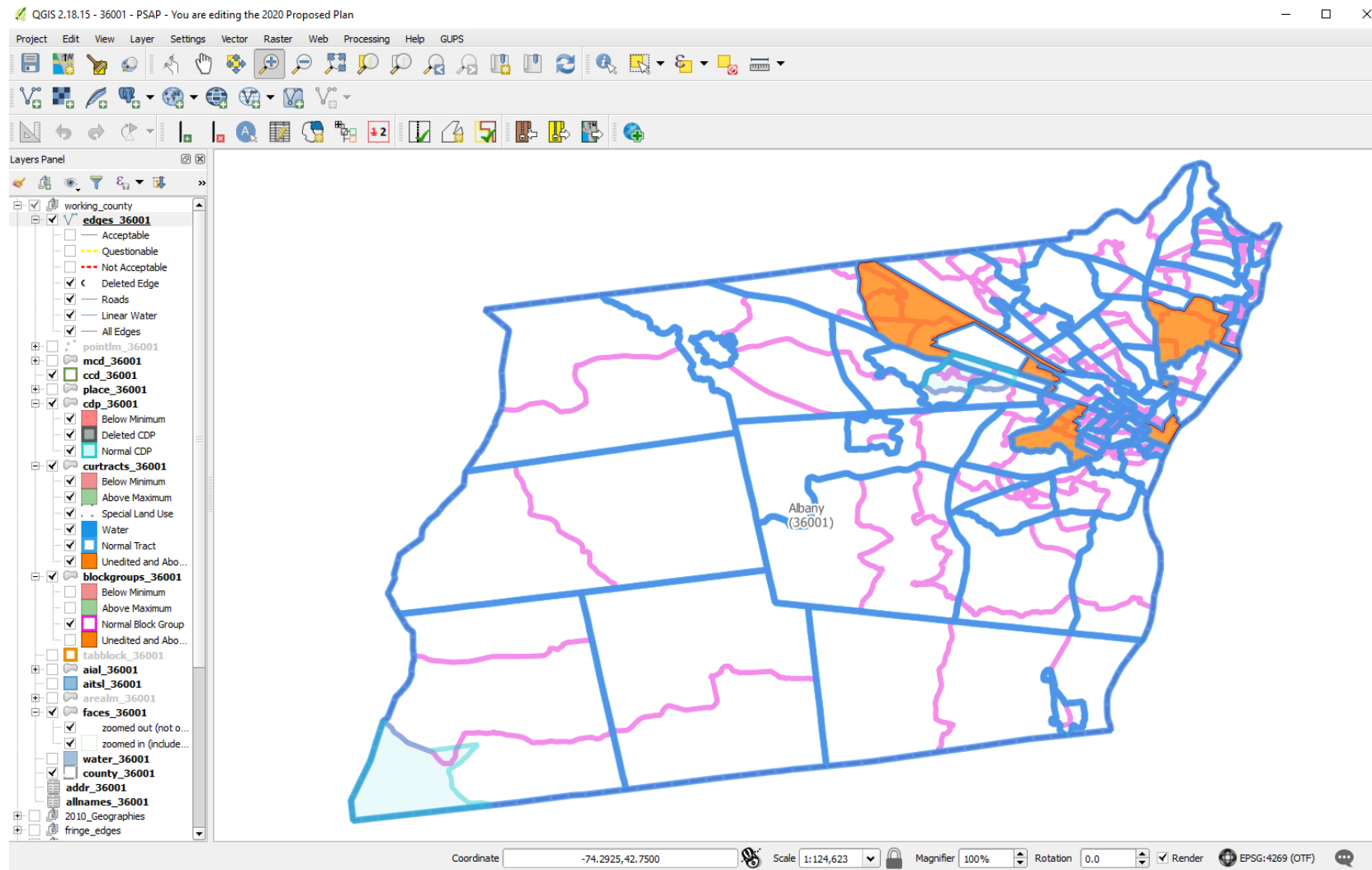


Census Designated Places (CDPs)

- Census Bureau Places.
 - Incorporated Places.
 - Legally bounded entity.
 - Cities and villages in New York State.
 - 62 cities, 539 villages currently in New York.
 - Census Designated Places.
 - Statistical entity within MCDs (Towns in New York).
 - Unincorporated community with a concentration of population, housing, identifiable by name, but not within an incorporated place.
 - 580 CDPs currently in New York.

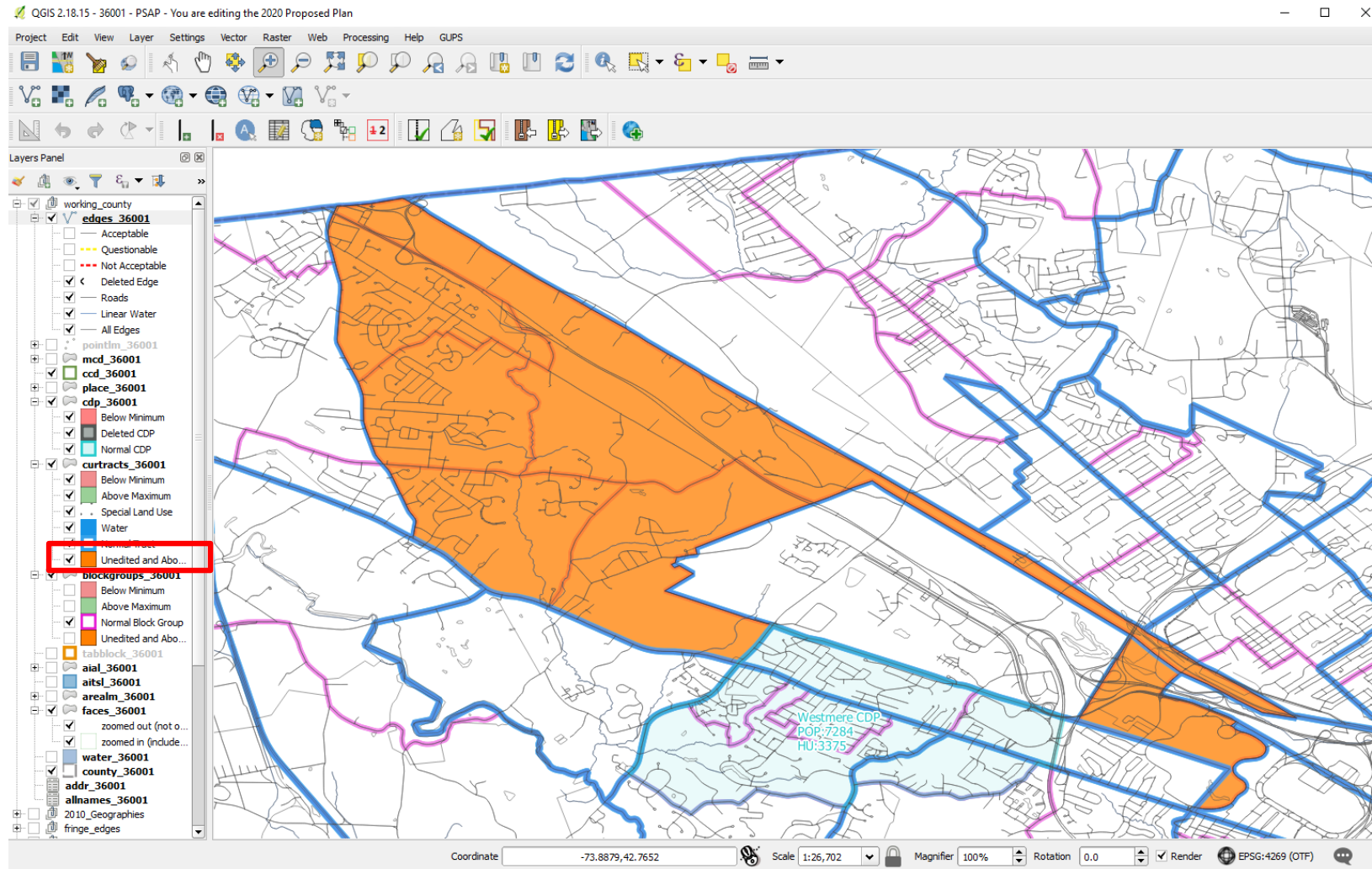


PSAP GUPS





Unedited Census Tracts





Above/Below Threshold Census Tracts

QGIS 2.18.15 - 36001 - PSAP - You are editing the 2020 Proposed Plan

Project Edit View Layer Settings Vector Raster Web Processing Help QGIS

Layers Panel

- working_county
- edges_36001
 - Acceptable
 - Questionable
 - Not Acceptable
 - Deleted Edge
 - Roads
 - Linear Water
 - All Edges
- pointlm_36001
- mcd_36001
- ccd_36001
- place_36001
- cdp_36001
 - Below Minimum
 - Deleted CDP
 - Normal CDP
- curtracts_36001**
 - Below Minimum
 - Above Maximum
- Water
 - Normal Tract
 - Unedited and Above/Below Threshold
- blockgroups_36001
 - Below Minimum
 - Above Maximum
 - Normal Block Group
 - Unedited and Above/Below Threshold
- tabblock_36001
- aial_36001
- aitsl_36001
- arealm_36001
- faces_36001
 - zoomed out (not outlined)
 - zoomed in (includes outline)
- water_36001
- county_36001
- addr_36001
- allnames_36001
- 2010_Geographies
- fringe_edges
- fringe_pointm

Modify Area Feature

Geography : Census Tract

Filter : No filter

Action : Split by Block Group

Info	Housing	Population
36001000100	910	2139
36001000200	3103	6046
36001000300	3041	5888
36001000401	1074	2227
36001000403	2306	4415

0138.01
POP:7278
HU:3196

0146.07
POP:8262
HU:3232

0139.01
POP:2460
HU:1016

0004.01
POP:2227
HU:1074

0146.15
POP:2374
HU:1336

0146.11
POP:1818
HU:834

0146.08
POP:4358
HU:1188

0004.04
POP:5203
HU:913

0146.14

0146.09

Coordinate: -73.9347,42.7672 Scale: 1:26,702 Magnifier: 100% Rotation: 0.0 Render EPSG:4269 (OTF)



Split Tract by Block Group

QGIS 2.18.15 - 36001 - PSAP - You are editing the 2020 Proposed Plan

Project Edit View Layer Settings Vector Raster Web Processing Help GUPS

Layers Panel

- working_county
- edges_36001
 - Acceptable
 - Questionable
 - Not Acceptable
 - Deleted Edge
 - Roads
 - Linear Water
 - All Edges
- pointlm_36001
- mcd_36001
- ccd_36001
- place_36001
- cdp_36001
 - Below Minimum
 - Deleted CDP
 - Normal CDP
- curtracts_36001
 - Below Minimum
 - Above Maximum
 - Special Land Use
 - Water
 - Normal Tract
 - Unedited and Above/Below Threshold
- blockgroups_36001
 - Below Minimum
 - Above Maximum
 - Normal Block Group
 - Unedited and Above/Below Threshold
- tabblock_36001
- aial_36001
- artsl_36001
- arealm_36001
- faces_36001
 - zoomed out (not outlined)
 - zoomed in (includes outline)
- water_36001
- county_36001
- addr_36001
- alnames_36001
- 2010_Geographies
- fringe_edges
- fringe_pointlm

Modify Area Feature

Geography: Census Tract

Filter: No filter

Action: Split by Block Group

Info	Housing	Population
36001014503	1158	2789
36001014606	1508	3675
36001014607	3232	8262
36001014608	1188	4358

Housing: 1793 Population: 4651

0138.01
POP:7278
HU:3196

0146.07
POP:8262
HU:3232

0146.15
POP:2374
HU:1336

0146.14
POP:5588

0146.08
POP:4358
HU:1188

0146.09
POP:4645

0139.01
POP:2460
HU:1016

0004.01
POP:2227
HU:1074

0004.04
POP:5208
HU:13

0146.11
POP:1818
HU:834

0146.06
POP:3675
HU:508

Coordinate: -73.8306,42.7636 Scale: 1:26,704 Magnifier: 100% Rotation: 0.0 Render EPSG:4269 (OTF)



Split Tract by Block Group

QGIS 2.18.15 - 36001 - PSAP - You are editing the 2020 Proposed Plan

Project Edit View Layer Settings Vector Raster Web Processing Help QGIS

Layers Panel

- working_county
- edges_36001
 - Acceptable
 - Questionable
 - Not Acceptable
 - Deleted Edge
 - Roads
 - Linear Water
 - All Edges
- pointlm_36001
- mcd_36001
- ccd_36001
- place_36001
- cdp_36001
 - Below Minimum
 - Deleted CDP
 - Normal CDP
- curtracts_36001
 - Below Minimum
 - Above Maximum
 - Special Land Use
 - Water
 - Normal Tract
 - Unedited and Above/Below Threshold
- blockgroups_36001
 - Below Minimum
 - Above Maximum
 - Normal Block Group
 - Unedited and Above/Below Threshold
- tabblock_36001
- aial_36001
- aitsl_36001
- arealm_36001
- psap20_36001_changes_curtracts
- faces_36001
 - zoomed out (not outlined)
 - zoomed in (includes outline)
- water_36001
- county_36001
- addr_36001
- allnames_36001
- 2010_Geographies

Modify Area Feature

Geography: Census Tract

Filter: No filter

Action: Split by Block Group

Info	Housing	Population
36001014503	1158	2789
36001014606	1508	3675
36001014608	1188	4358
36001014609	2538	4645
36001014611	834	1818

Coordinate: -73.8923,42.7625 Scale: 1:26,704 Magnifier: 100% Rotation: 0.0 Render EPSG:4269 (OTF)



Add Faces to Census Tract

The screenshot shows the QGIS 2.18.15 interface. The main map displays several census tracts with labels for their IDs, population (POP), and housing units (HU). A red box highlights the 'Action' dropdown in the 'Modify Area Feature' panel, which is set to 'Boundary Change'. A red arrow points from this dropdown to a specific tract on the map. A blue star on the map is labeled 'You Are Here'.

Modify Area Feature

Geography : Census Tract

Filter : No filter

Action : Boundary Change

Info	Housing	Population
36001000401	1074	2227
36001000403	2306	4415
36001000404	13	5203
36001000501	1652	3412

Housing : 15 Population : 6801

Map Labels:

- 0004.01 POP:2227 HU:1074
- 0140.01-3 POP:747 HU:348
- 0146.17 POP:3611 HU:1439
- 0004.04-1 POP:5203 HU:13
- 0004.04 POP:5203 HU:13
- 0146.08 POP:4358 HU:1188
- 0003.00 POP:5888 HU:3041
- 0003.00-1 POP:1177 HU:762
- 0146.08-1 POP:2583 HU:414
- 0146.09-2 POP:1695 HU:819
- 0004.03-4 POP:922 HU:522
- 0004.03 POP:4415 HU:2306
- 0018.02-4 POP:884 HU:495
- 0146.09 POP:4645 HU:2328



Add Faces to Census Tract

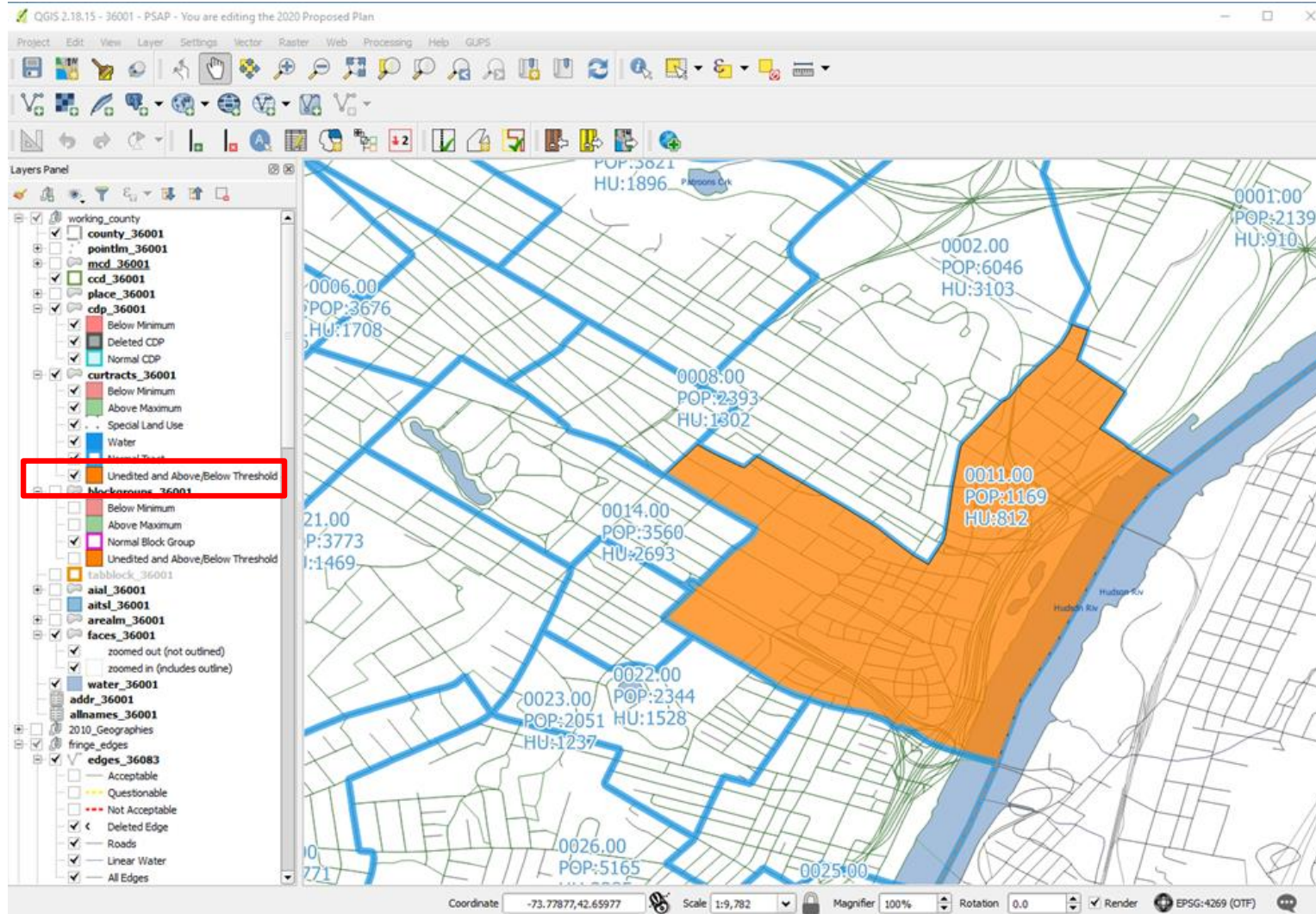
The screenshot shows the QGIS 2.18.15 interface. The main map displays several census tracts outlined in blue and pink. Each tract is labeled with its ID, population (POP), and housing units (HU). For example, tract 0138.01 has POP:7278 and HU:3196. A specific tract, 36001000404, is highlighted in blue and circled in red. The 'Modify Area Feature' dialog box is open on the right, showing the selected tract's details:

Info	Housing	Population
36001000403	2306	4415
36001000404	15	6801
36001000501	1652	3412
36001000502	943	3448

Below the table, the dialog shows 'Housing : 15' and 'Population : 6801'. The 'Info' tab is selected, and the 'Boundary Change' action is chosen. The 'Add' button (a green plus sign) is highlighted with a red box. The Layers Panel on the left shows various layers, including 'faces_36001' which is currently selected.



Below Threshold Census Tracts





Below Threshold Census Tracts (Merge)

QGIS 2.18.15 - 36001 - PSAP - You are editing the 2020 Proposed Plan

Project Edit View Layer Settings Vector Raster Web Processing Help GUPS

Layers Panel

- edges_36091
 - Acceptable
 - Questionable
 - Not Acceptable
 - Deleted Edge
 - Roads
 - Linear Water
 - All Edges
- edges_36093
 - Acceptable
 - Questionable
 - Not Acceptable
 - Deleted Edge
 - Roads
 - Linear Water
 - All Edges
- edges_36095
 - Acceptable
 - Questionable
 - Not Acceptable
 - Deleted Edge
 - Roads
 - Linear Water
 - All Edges
- fringe_pointlin
- fringe_arealm
- fringe_curtracts
- fringe_blockgroups
- fringe_ccd
- fringe_place
- fringe_cdp
- fringe_changes
- fringe_faces
- fringe_mcd
- fringe_water
- fringe_county
- fringe_addr
- fringe_allnames
- fringe_block
- fringe_tribal

Modify Area Feature

Geography : Census Tract

Filter : No filter

Action : Merge

Info	Housing	Population
36001014100	2396	5304
36001014201	2264	5768
36001014202	2641	5938
36001014203	2552	6002

Housing : 3097 Population : 7951

Coordinate: -73.76661, 42.64879 Scale: 1:8,000 Magnifier: 100% Rotation: 0.0 Render: EPSG:4269 (OTF)

Map Labels:

- 0006.00 POP:3676 HU:1708
- POP:3821 HU:1896
- 0002.00 POP:6046 HU:3103
- 0014.00 POP:3560 HU:2693
- 0008.00 POP:2393 HU:1302
- 0011.00 POP:1169 HU:812
- 0022.00 POP:2344 HU:1528
- 0023.00 POP:2051 HU:1237
- 0025.00
- 21.00 P:3773



Below Threshold Census Tracts (Merge)

QGIS 2.18.15 - 36001 - PSAP - You are editing the 2020 Proposed Plan

Project Edit View Layer Settings Vector Raster Web Processing Help QGIS

Layers Panel

- curtracts_36001
 - Below Minimum
 - Above Maximum
 - Special Land Use
 - Water
 - Normal Tract
 - Unedited and Above/Below Threshold
- blockgroups_36001
 - Below Minimum
 - Above Maximum
 - Normal Block Group
 - Unedited and Above/Below Threshold
- tabblock_36001
- aial_36001
- aitsl_36001
- arealm_36001
- psap20_36001_changes_blockgroups
- psap20_36001_changes_curtracts
- faces_36001
 - zoomed out (not outlined)
 - zoomed in (includes outline)
- water_36001
- county_36001
- addr_36001
- allnames_36001
- 2010_Geographies
- fringe_edges
- edges_36083
 - Acceptable
 - Questionable
 - Not Acceptable
 - Deleted Edge
 - Roads
 - Linear Water
 - All Edges
- edges_36021
 - Acceptable
 - Questionable
 - Not Acceptable
 - Deleted Edge
 - Roads
 - Linear Water

Modify Area Feature

Geography : Census Tract

Filter : No filter

Action : Merge

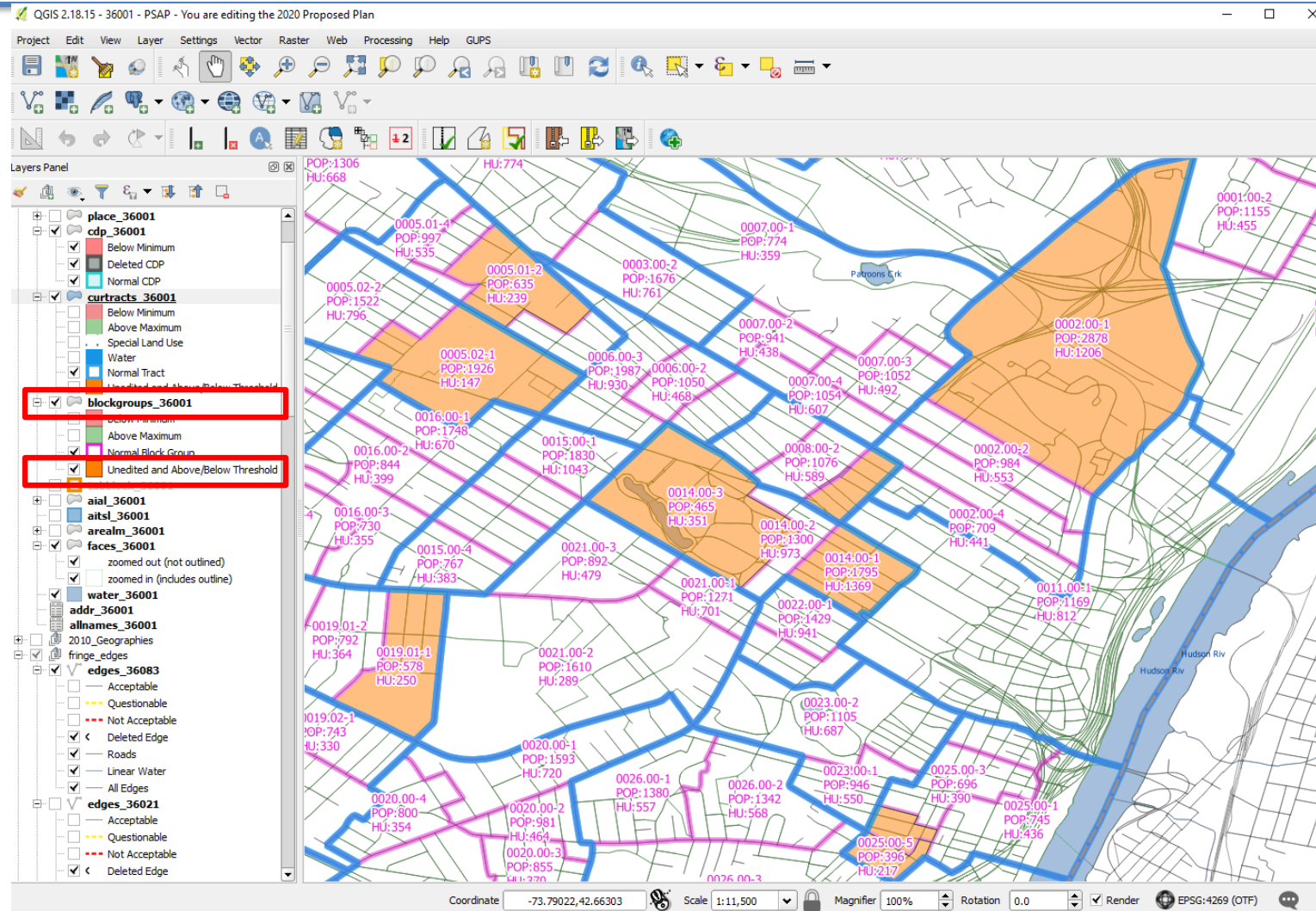
Info	Housing	Population
36001014700	1131	2692
36001014801	1634	2794
36001014802	1271	1843
36001014803	1600	3361

Housing : 2114 Population : 3562

Coordinate: -73.75825,42.66890 Scale: 1:8,000 Magnifier: 100% Rotation: 0.0 Render EPSG:4269 (OTF)

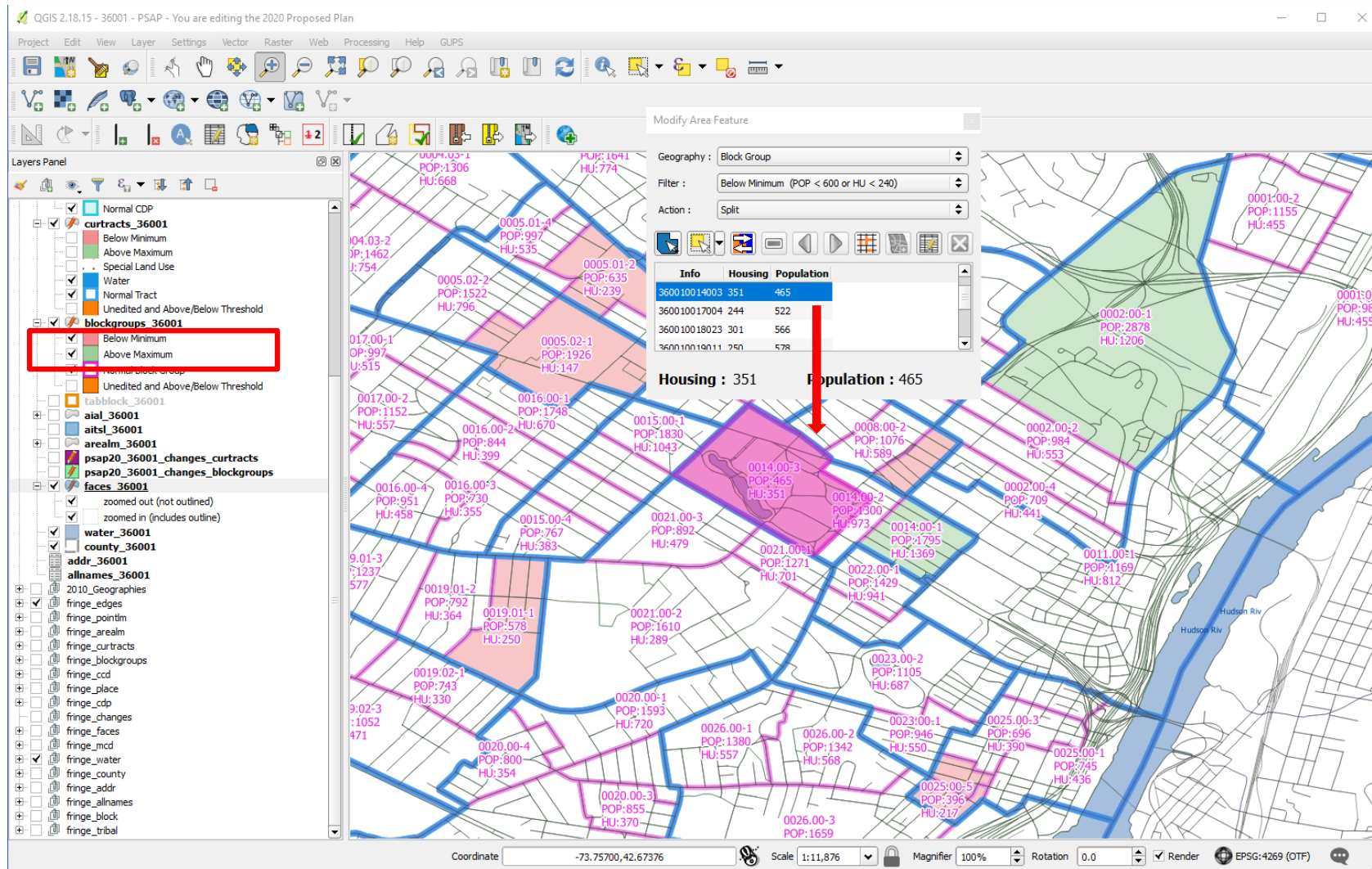


Above/Below Threshold Block Groups





Above/Below Threshold Block Groups





CDP Expansion

QGIS 2.18.15 - 36091 - PSAP - You are editing the 2020 Proposed Plan

Project Edit View Layer Settings Vector Raster Web Processing Help QGIS

Layers Panel

- Unedited and Above/Below Threshold
- blockgroups_36091
 - Below Minimum
 - Above Maximum
 - Normal Block Group
 - Unedited and Above/Below Threshold
- tabblock_36091
- aial_36091
- aitsl_36091
- arealm_36091
- faces_36091
 - zoomed out (not outlined)
 - zoomed in (includes outline)
- water_36091
- county_36091
- addr_36091
- allnames_36091
- 2010_Geographies
 - fringe_edges
 - fringe_pointm
 - fringe_arealm
 - fringe_curtracts
 - fringe_blockgroups
 - fringe_ccd
 - fringe_place
 - fringe_cdp
 - fringe_changes
 - fringe_faces
- faces_36001
 - zoomed out (not outlined)
 - zoomed in (includes outline)
- faces_36035
 - zoomed out (not outlined)
 - zoomed in (includes outline)
- faces_36041
 - zoomed out (not outlined)
 - zoomed in (includes outline)
- faces_36057
 - zoomed out (not outlined)
 - zoomed in (includes outline)
- faces_36083
 - zoomed out (not outlined)
 - zoomed in (includes outline)

Modify Area Feature

Geography : Census Designated Place (CDP)

Filter : No filter

Action : Boundary Change

Info	Housing	Population
36-31258-Hadley CDP	1012	2018
36-31918-Hampton Manor ...	NULL	NULL
36-40651-Lake Luzerne CDP	NULL	NULL

Housing : 1012 Population : 2018

Hadley CDP
POP:2018
HU:1012

Coordinate: -73.87857,43.32684 Scale: 1:10,979 Magnifier: 100% Rotation: 0.0 Render EPSG:4269 (OTF)



CDP Expansion

QGIS 2.18.15 - 36091 - PSAP - You are editing the 2020 Proposed Plan

Project Edit View Layer Settings Vector Raster Web Processing Help GUPS

Layers Panel

- Unedited and Above/Below Threshold
- blockgroups_36091
 - Below Minimum
 - Above Maximum
 - Normal Block Group
 - Unedited and Above/Below Threshold
- tabblock_36091
- aial_36091
- aitsl_36091
- arealm_36091
- faces_36091
 - zoomed out (not outlined)
 - zoomed in (includes outline)
- water_36091
- county_36091
- addr_36091
- allnames_36091
- 2010_Geographies
 - fringe_edges
 - fringe_pointlm
 - fringe_arealm
 - fringe_curtracts
 - fringe_blockgroups
 - fringe_ccd
 - fringe_place
 - fringe_cdp
 - fringe_changes
 - fringe_faces
- faces_36001
 - zoomed out (not outlined)
 - zoomed in (includes outline)
- faces_36035
 - zoomed out (not outlined)
 - zoomed in (includes outline)
- faces_36041
 - zoomed out (not outlined)
 - zoomed in (includes outline)
- faces_36057
 - zoomed out (not outlined)
 - zoomed in (includes outline)
- faces_36083
 - zoomed out (not outlined)
 - zoomed in (includes outline)

Modify Area Feature

Geography : Census Designated Place (CDP)

Filter : No filter

Action : Boundary Change

Info	Housing	Population
36-29338-Glens Falls North ...	NULL	NULL
36-31258-Hadley CDP	1012	2018
36-31918-Hampton Manor ...	NULL	NULL
36-40651-Lake Luzerne CDP ...	NULL	NULL

Housing : 1012 Population : 2018

Hadley CDP
POP:2018
HU1012

Coordinate: -73.87937,43.32523 Scale: 1:10,979 Magnifier: 100% Rotation: 0.0 Render EPSG:4269 (OTF)



CDP Expansion

QGIS 2.18.15 - 36091 - PSAP - You are editing the 2020 Proposed Plan

Project Edit View Layer Settings Vector Raster Web Processing Help GUPS

Layers Panel

- Unedited and Above/Below Threshold
- blockgroups_36091
 - Below Minimum
 - Above Maximum
 - Normal Block Group
- Unedited and Above/Below Threshold
- tabblock_36091
- aial_36091
- aitsl_36091
- arealm_36091
- faces_36091
 - zoomed out (not outlined)
 - zoomed in (includes outline)
- water_36091
- county_36091
- addr_36091
- allnames_36091
- 2010_Geographies
- fringe_edges
- fringe_pointm
- fringe_arealm
- fringe_curtracts
- fringe_blockgroups
- fringe_ccd
- fringe_place
- fringe_cdp
- fringe_changes
- fringe_faces
- faces_36001
 - zoomed out (not outlined)
 - zoomed in (includes outline)
- faces_36035
 - zoomed out (not outlined)
 - zoomed in (includes outline)
- faces_36041
 - zoomed out (not outlined)
 - zoomed in (includes outline)
- faces_36057
 - zoomed out (not outlined)
 - zoomed in (includes outline)
- faces_36083
 - zoomed out (not outlined)
 - zoomed in (includes outline)

Modify Area Feature

Geography : Census Designated Place (CDP)

Filter : No filter

Action : Boundary Change

Info

	Housing	Population
36-29338-Glens Falls North ...	NULL	NULL
36-31258-Hadley CDP	1012	2018
36-31918-Hampton Manor ...	NULL	NULL
36-40651-Lake Luzerne CDP ...	NULL	NULL

Housing : 1012 Population : 2018

Hadley CDP
POP:2018
HU:1012

Coordinate: -73.87967,43.32462 Scale: 1:10,979 Magnifier: 100% Rotation: 0,0 Render EPSG:4269 (OTF)



CDP Expansion

QGIS 2.18.15 - 36091 - PSAP - You are editing the 2020 Proposed Plan

Project Edit View Layer Settings Vector Raster Web Processing Help GUPS

Layers Panel

- cdp_36091
 - Below Minimum
 - Deleted CDP
 - Normal CDP
- curtracts_36091
 - Below Minimum
 - Above Maximum
 - Special Land Use
- Water
- Normal Tract
- Unedited and Above/Below Threshold
- blockgroups_36091
 - Below Minimum
 - Above Maximum
 - Normal Block Group
 - Unedited and Above/Below Threshold
- tabblock_36091
- aial_36091
- aitsl_36091
- arealm_36091
- psap20_36091_changes_cdp
- faces_36091
 - zoomed out (not outlined)
 - zoomed in (includes outline)
- water_36091
- county_36091
- addr_36091
- allnames_36091
- 2010_Geographies
 - fringe_edges
 - fringe_pointlm
 - fringe_arealm
 - fringe_curtracts
 - fringe_blockgroups
 - fringe_ccd
 - fringe_place
 - fringe_cdp
 - fringe_changes
 - fringe_faces
- faces_36001
 - zoomed out (not outlined)
 - zoomed in (includes outline)
- faces_36035

0 feature(s) selected on layer cdp_36091.

Coordinate: -73.87957,43.32180 Scale: 1:10,979 Magnifier: 100% Rotation: 0.0 Render EPSG:4269 (OTF)

Modify Area Feature

Geography: Census Designated Place (CDP)

Filter: No filter

Action: Boundary Change

Info	Housing	Population
36-29338-Glens Falls North CDP	NULL	NULL
36-31258-Hadley CDP	576	1190
36-31918-Hampton Manor CDP	NULL	NULL
36-40651-Lake Luzerne CDP	NULL	NULL

Housing : 576 Population : 1190

Hadley CDP
POP:1190
HU:576



Rename a CDP

QGIS 2.18.15 - 36091 - PSAP - You are editing the 2020 Proposed Plan

Project Edit View Layer Settings Vector Raster Web Processing Help QGIS

Layers Panel

- working_county
- edges_36091
 - Acceptable
 - Questionable
 - Not Acceptable
 - Deleted Edge
 - Roads
 - Linear Water
 - All Edges
- pointlm_36091
- mcd_36091
- cd_36091
- place_36091
- cdp_36091
 - Below Minimum
 - Deleted CDP
 - Normal CDP
- curtracts_36091
 - Below Minimum
 - Above Maximum
 - Special Land Use
 - Water
 - Normal Tract
 - Unedited and Above/Below Threshold
- blockgroups_36091
 - Below Minimum
 - Above Maximum
 - Normal Block Group
 - Unedited and Above/Below Threshold
- tabblock_36091
- aial_36091
- aitsl_36091
- arealm_36091
- psap20_36091_changes_cdp
- faces_36091
 - zoomed out (not outlined)
 - zoomed in (includes outline)
- water_36091
- county_36091
- addr_36091

Modify Area Feature

* Indicates required field

STATEFP : 36

PLACEFP : 31258

NAME : Hadley Hamlet

LSAD : CDP (suffix)

JUSTIFY : None

JSTFY_NAME : Other

Ok Cancel

Change Attributes Justification

Justification Length: 46 (Max: 150 chars)

To conform to Census Bureau naming conventions

Ok Cancel

Modify Area Feature

Geography : Census Designated Place (CDP)

Filter : No filter

Action : Boundary Change

Info

Info	Housing	Population
36-29338-Glens Falls North CDP	NULL	NULL
36-31258-Hadley CDP	576	1190
36-31918-Hampton Manor CDP	NULL	NULL
36-40651-Lake Luzerne CDP	NULL	NULL

Housing : 576 Population : 1190

Hadley town

Hadley CDP
POP:1190
HU:576

0 feature(s) selected on layer cdp_36091.

Coordinate -73.82061,43.31994 Scale 1:17,518 Magnifier 100% Rotation 0.0 Render EPSG:4269 (OTF)



Rename a CDP

QGIS 2.18.15 - 36091 - PSAP - You are editing the 2020 Proposed Plan

Project Edit View Layer Settings Vector Raster Web Processing Help GUPS

Layers Panel

- working_county
- edges_36091
 - Acceptable
 - Questionable
 - Not Acceptable
 - Deleted Edge
 - Roads
 - Linear Water
 - All Edges
- pointlm_36091
- mcd_36091
- ccd_36091
- place_36091
- cdp_36091
 - Below Minimum
 - Deleted CDP
 - Normal CDP
- curtracts_36091
 - Below Minimum
 - Above Maximum
 - Special Land Use
- Water
- Normal Tract
- Unedited and Above/Below Threshold
- blockgroups_36091
 - Below Minimum
 - Above Maximum
 - Normal Block Group
 - Unedited and Above/Below Threshold
- tabblock_36091
- aial_36091
- aitsl_36091
- arealm_36091
- psap20_36091_changes_cdp
- faces_36091
 - zoomed out (not outlined)
 - zoomed in (includes outline)
- water_36091
- county_36091
- addr_36091

0 feature(s) selected on layer cdp_36091.

Coordinate: -73.85632, 43.34302 Scale: 1:17,518 Magnifier: 100% Rotation: 0.0 Render EPSG:4269 (OTF)

Modify Area Feature

Geography: Census Designated Place (CDP)

Filter: No filter

Action: Boundary Change

Info	Housing	Population
36-80082-West Glens Falls CDP	NULL	NULL
36-80423-Westmere CDP	3375	7284
36-80863-West Sand Lake CDP	NULL	NULL
36-83349-Wynantskill CDP	NULL	NULL
36-a001-Hadley Hamlet CDP	576	1190



Training Webinars

- Headquarters will conduct training webinars with assistance from Regional Geographers.
- The recorded webinars and scripts will be posted on PSAP Web site.
- Webinars begin week after delineation phase materials are mailed in January 2019.

Submission Processing



- Census Bureau reviews and implements participant updates by:
 - Reviewing and updating while enforcing thresholds for census tracts and block groups.
 - Reviewing, maintaining, and updating boundaries for CCDs.
 - Reviewing and updating CDP boundaries.
 - Reviewing and updating all tribal statistical boundaries.



Verification Phase

- Verification phase materials will be mailed – **January 2020.**
- Participants will have 90 days to submit updates.



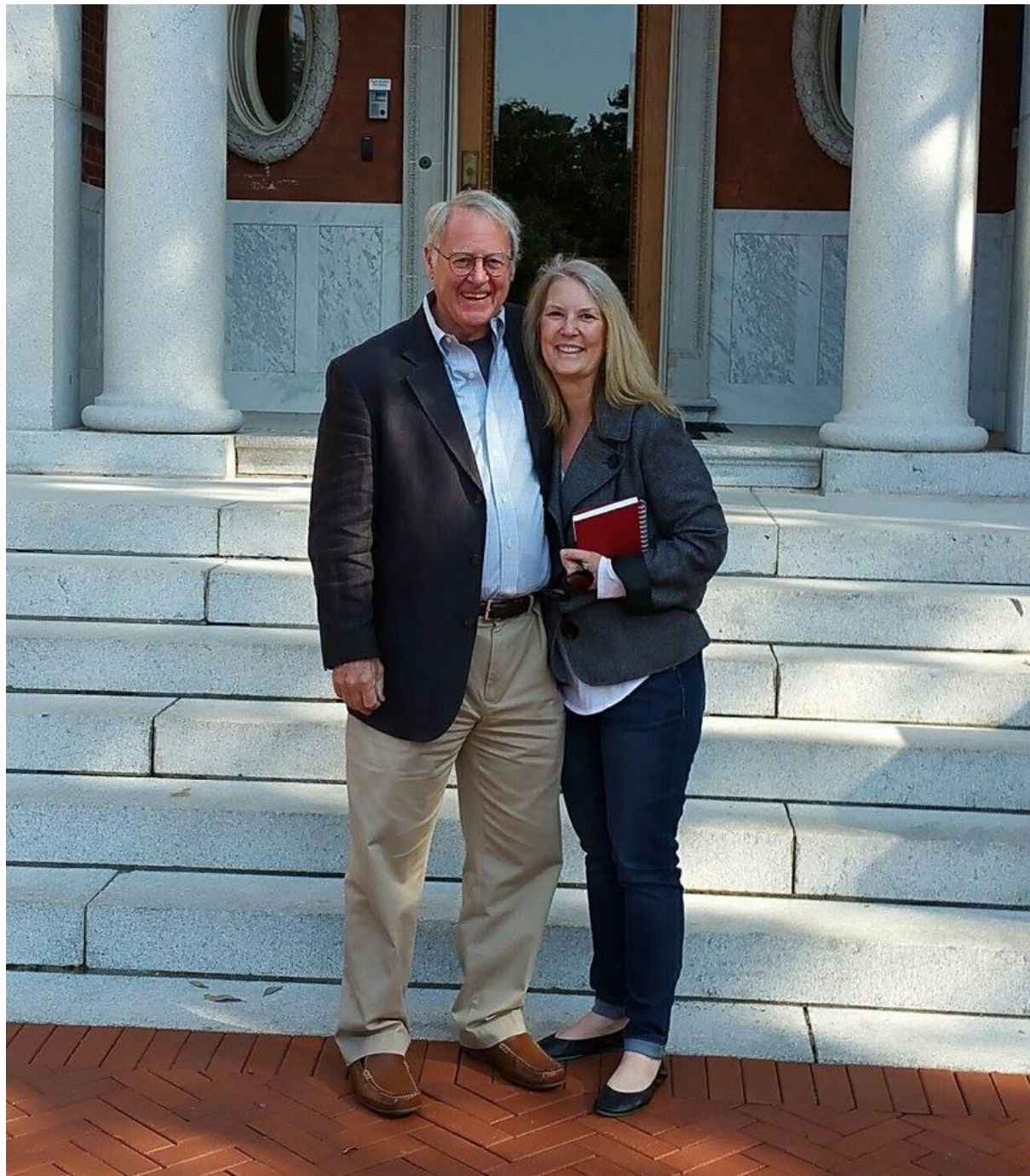
2020 Census PSAP Schedule

Timeframe	Activity
February – July 2018	Establish the 2020 PSAP participant list.
July – September 2018	PSAP Invitation materials sent to PSAP Participants.
January 2019	Delineation Phase begins. Participants have 120 calendar days to submit updates.
February 2019	Webinar trainings begin.
July 2019	Participants notified of delineation phase closeout.
January 2020	Verification phase begins. Participants have 90 calendar days to review updates.
October 2020	Participants notified of program closeout.



Contact Information

- E-mail: geo.psap@census.gov
- Phone: 1.844.788.4921
- Web site: <https://www.census.gov/programs-surveys/decennial-census/about/psap.html>



College of Charleston

Nov. 2016