

Group Quarters Locations and Counts

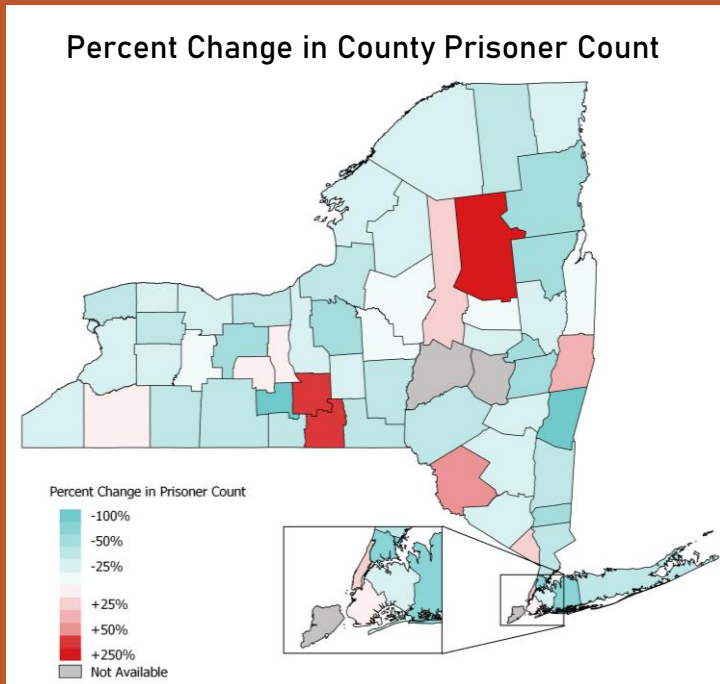
RUSSELL KWONG

CORNELL UNIVERSITY, PROGRAM ON APPLIED DEMOGRAPHICS

Outline

- NYS Correctional Populations 2010 – 2020
- NYS Nursing Home Populations 2020
- NYS Dormitory Populations 2020 (in progress)

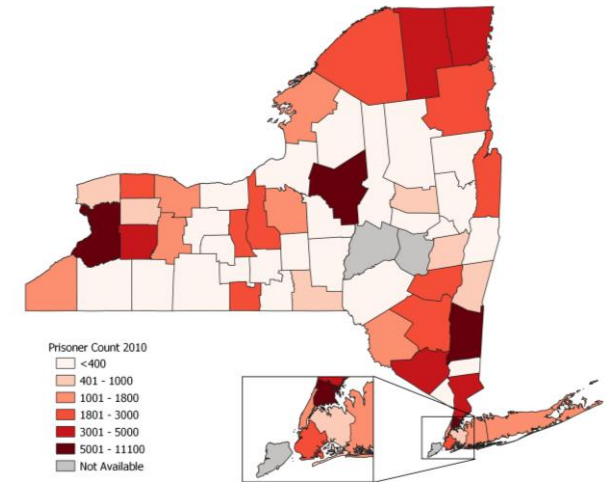
2010 – 2020 Prisoner Counts Overview



Highlights:

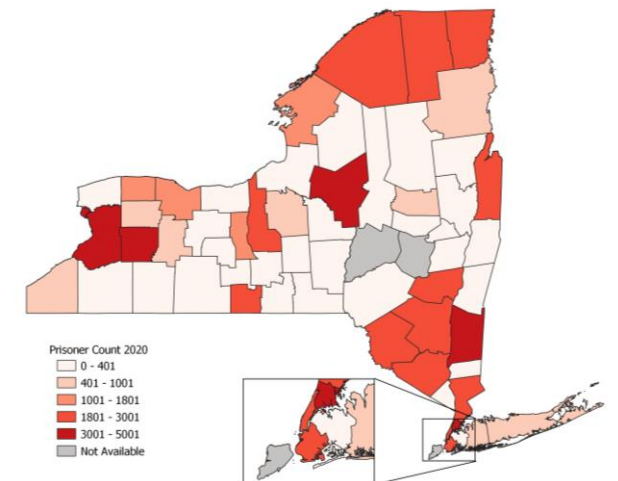
- Correctional population counts decreased by ~27,000
- 12 counties reported increases in correctional populations
- As of 2020, Oneida County had the highest prison population (followed by Bronx, Dutchess, Erie Counties)
- The Bronx experienced the largest decrease in prison population
- Percent of incarcerated individuals in New York remains lower than national average

2010 Prisoner Count by County



State Count: 89694

2020 Prisoner Count by County



State Count: 62007

Declining Prison Populations

Between 2010 – 2020: correctional population decreased by 27,000 (30%)

Reflects national decrease (-24.7%) in federal and state facilities 2010 – 2020

Reflects closure of 17 prisons (mostly min and max security) 2011 – 2019

Percent change (2019 – 2020) is -15.0%

Census, State, PAD Counts

2020 Counts of Selected Facilities:

- Census Count: 47,883
- SCOC Count: 47,769
- PAD Count: 37,591

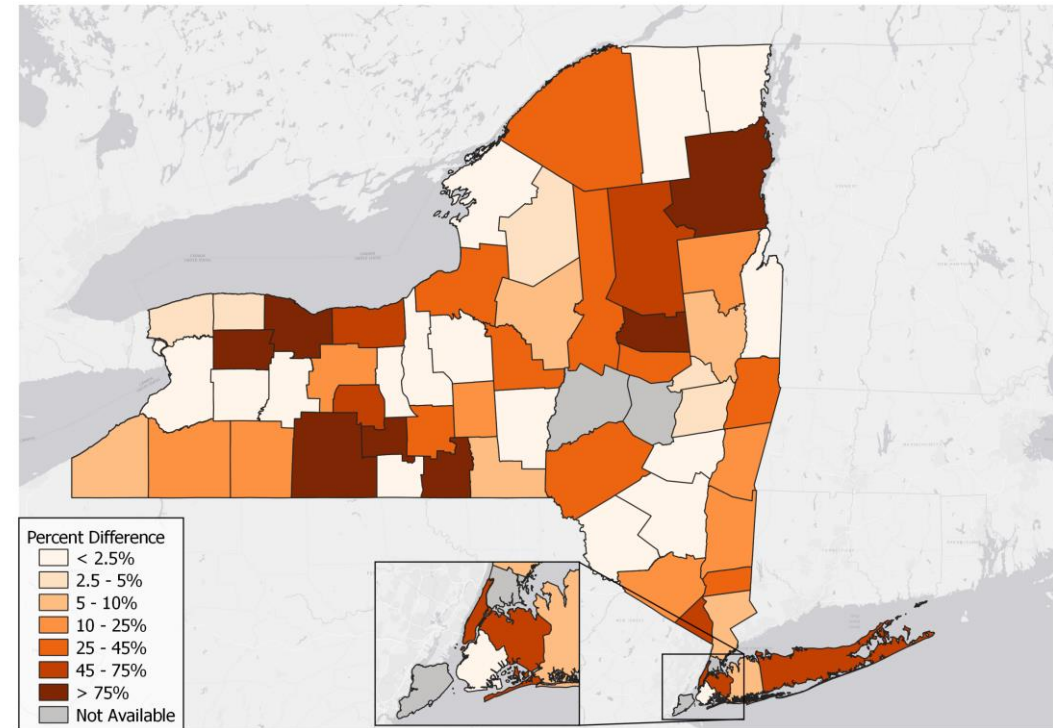
Total 2020 Counts:

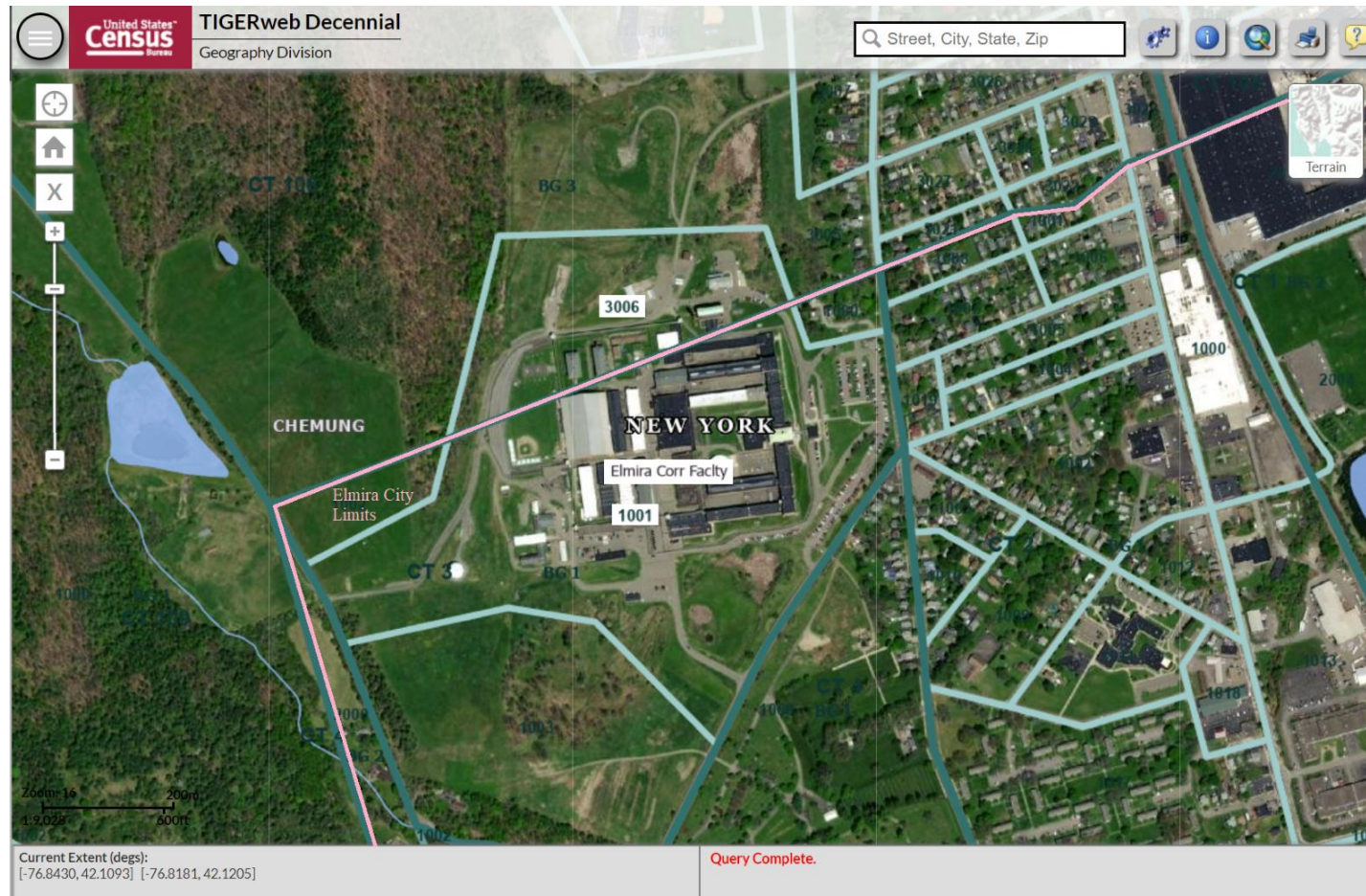
- Census Count: 62,007
- SCOC Count: 52,973

Total 2010 Counts:

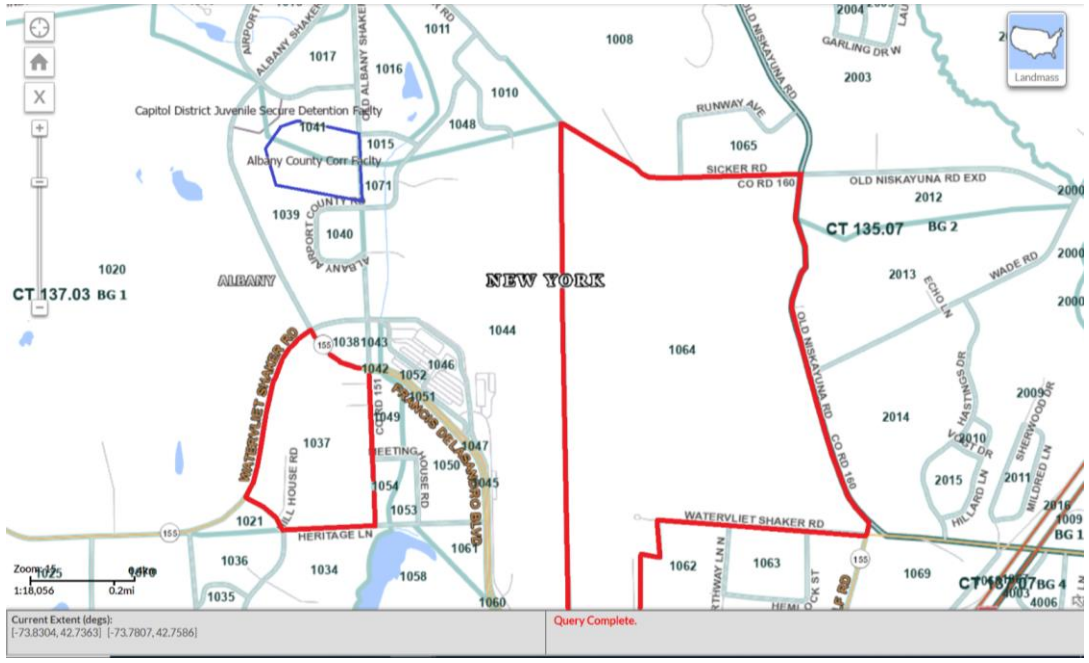
- Census Count: 89,694
- PAD Counts: 86,345

Percent Difference Between Census and State Counts 2020

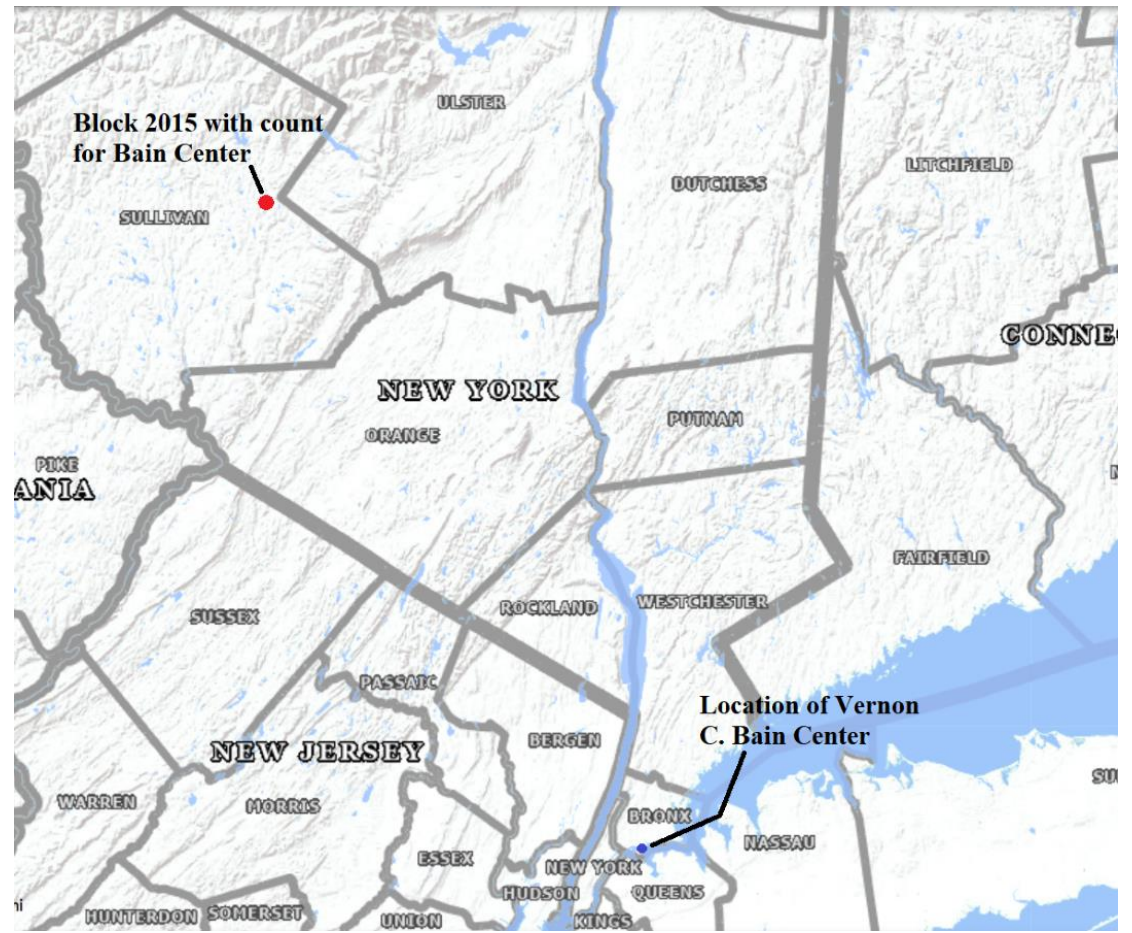




Elmira Correctional Facility
Facility split into multiple blocks



Albany County Correctional Facility
Incorrectly reported GQ Type

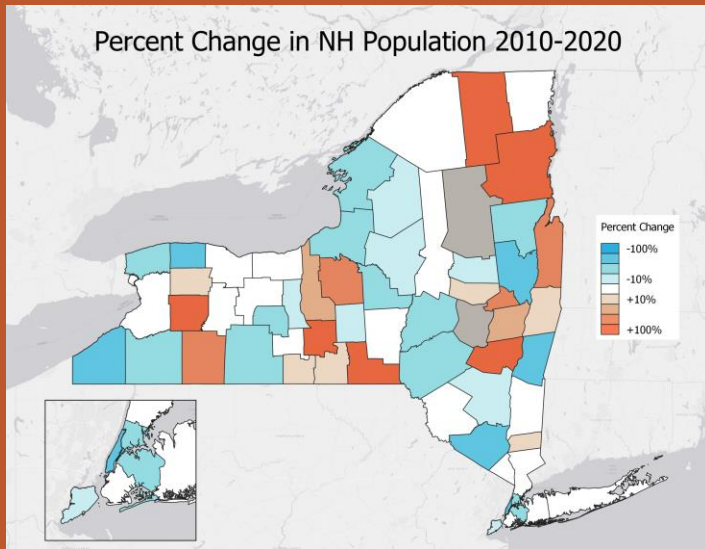


Vernon C. Bain Center
Incorrectly reported count location

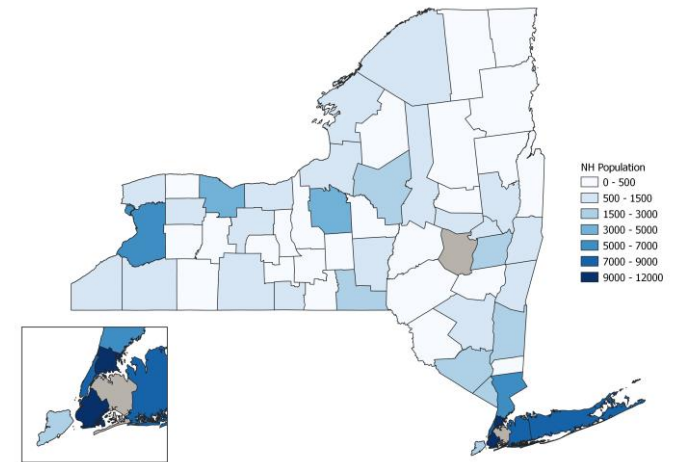
Nursing Home Population Overview

Highlights:

- Nursing home population counts decreased by ~5000
- 27 counties reported decreased nursing home populations
- As of 2020, Queens County had the highest NH population (followed by Bronx, Kings, and Suffolk Counties)
- New York County experienced the largest decrease in NH population

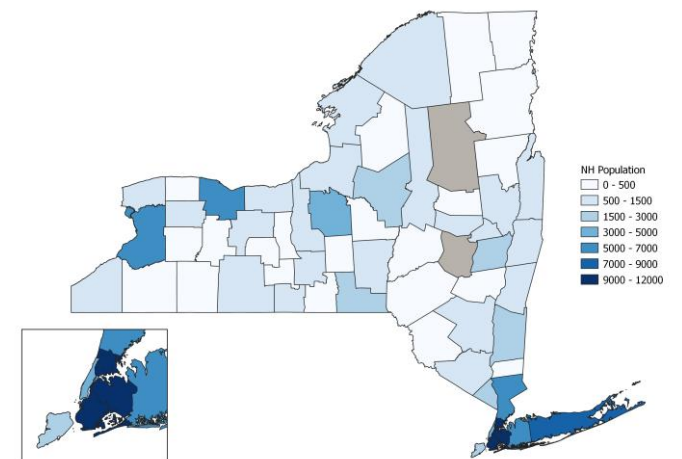


2010 Nursing Home Population in New York State



Population: 116,558

2020 Nursing Home Population in New York State

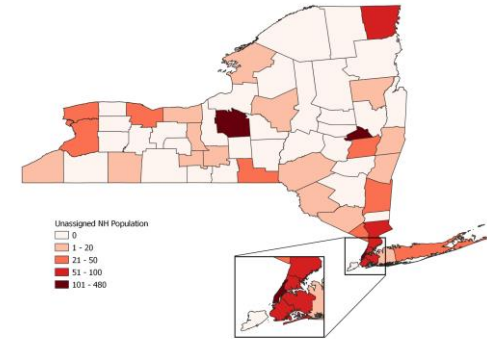


Population: 111,115

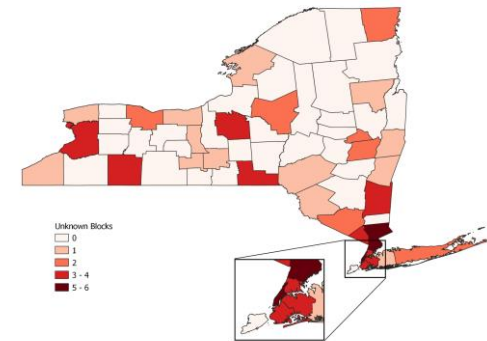
Nursing Home Populations

- In 2020, there were 111,680 people were reported as living in nursing homes.
- PAD has database of 661 nursing homes, 200 were added
- 66 blocks remain unaccounted for (1854 people)

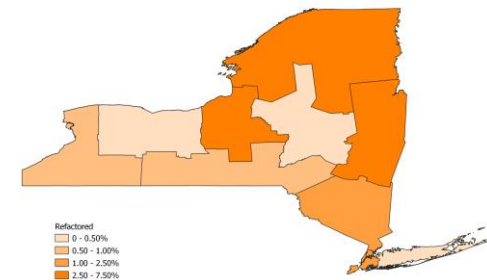
NH Population with no Facility



Blocks with Unassigned NH Pop

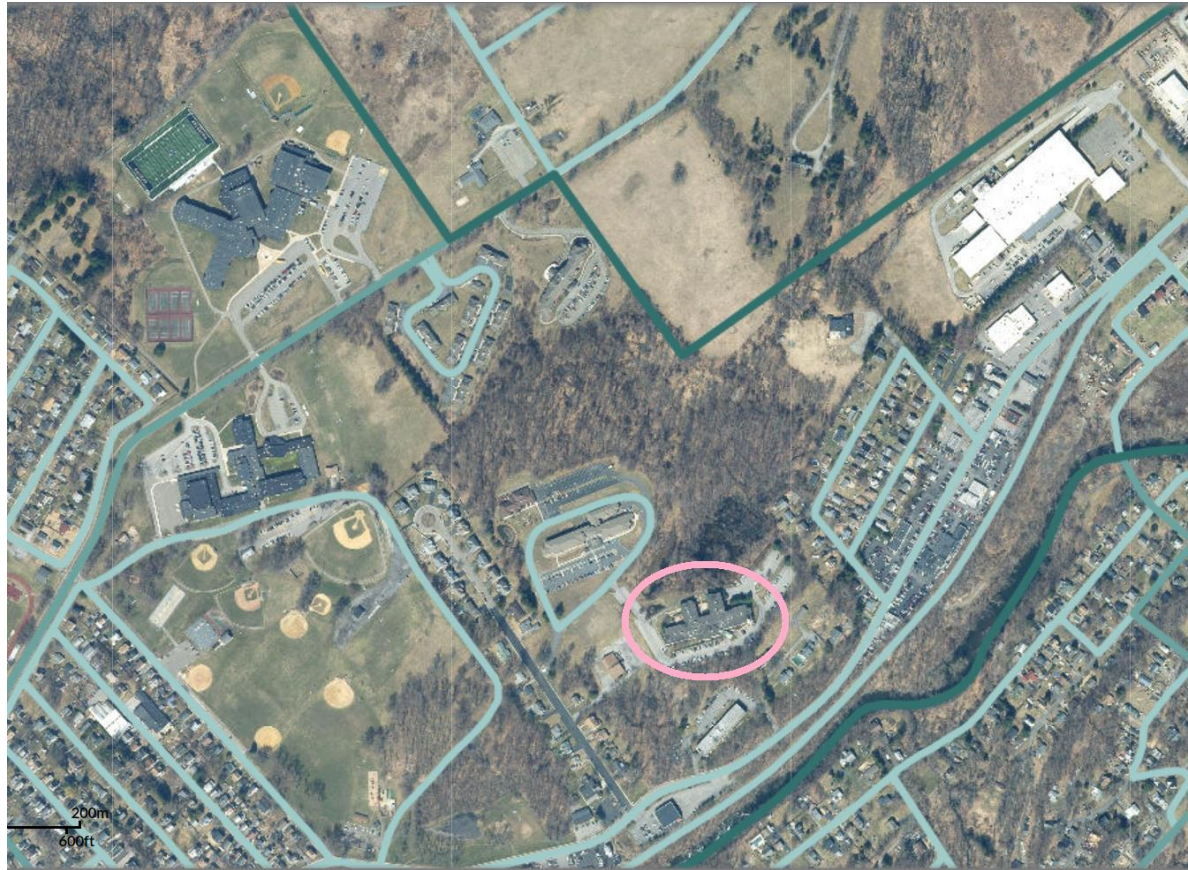


NYS Regions with Percent Unassigned





A. Holly Patterson Ext Care Fac / Rutland Nursing Home
Incorrectly reported count location

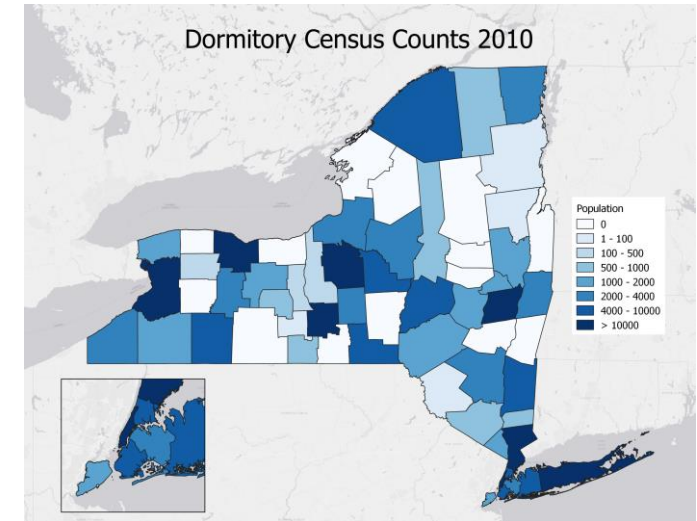
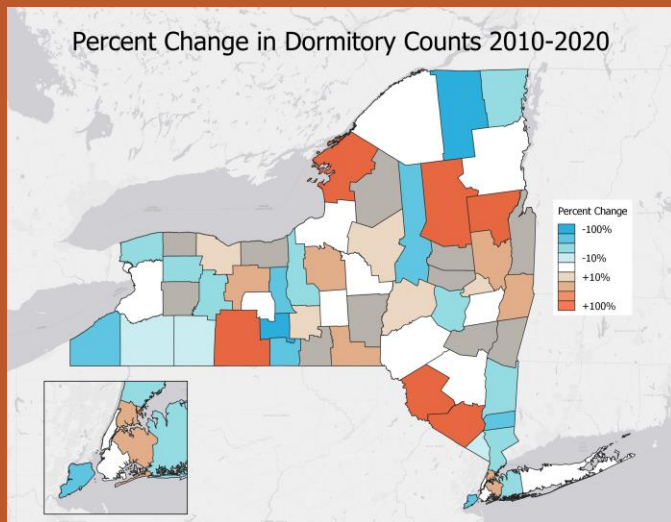


Wingate at Beacon / The Villages of Orleans
Incorrectly reported GQ Population Type

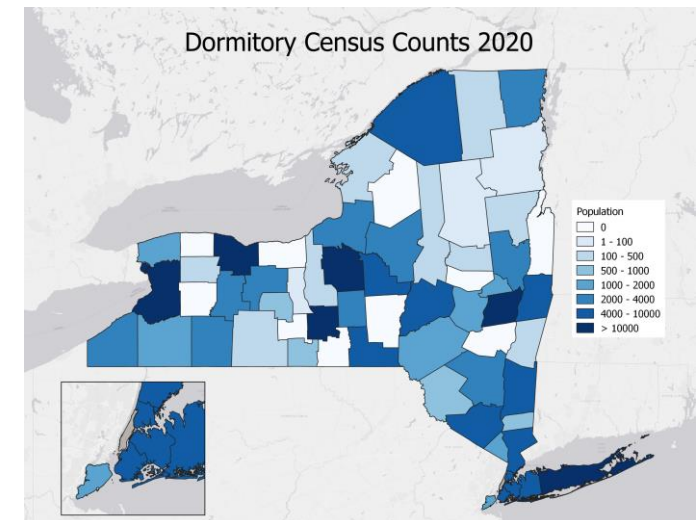
2020 Dormitory Counts Overview

Highlights:

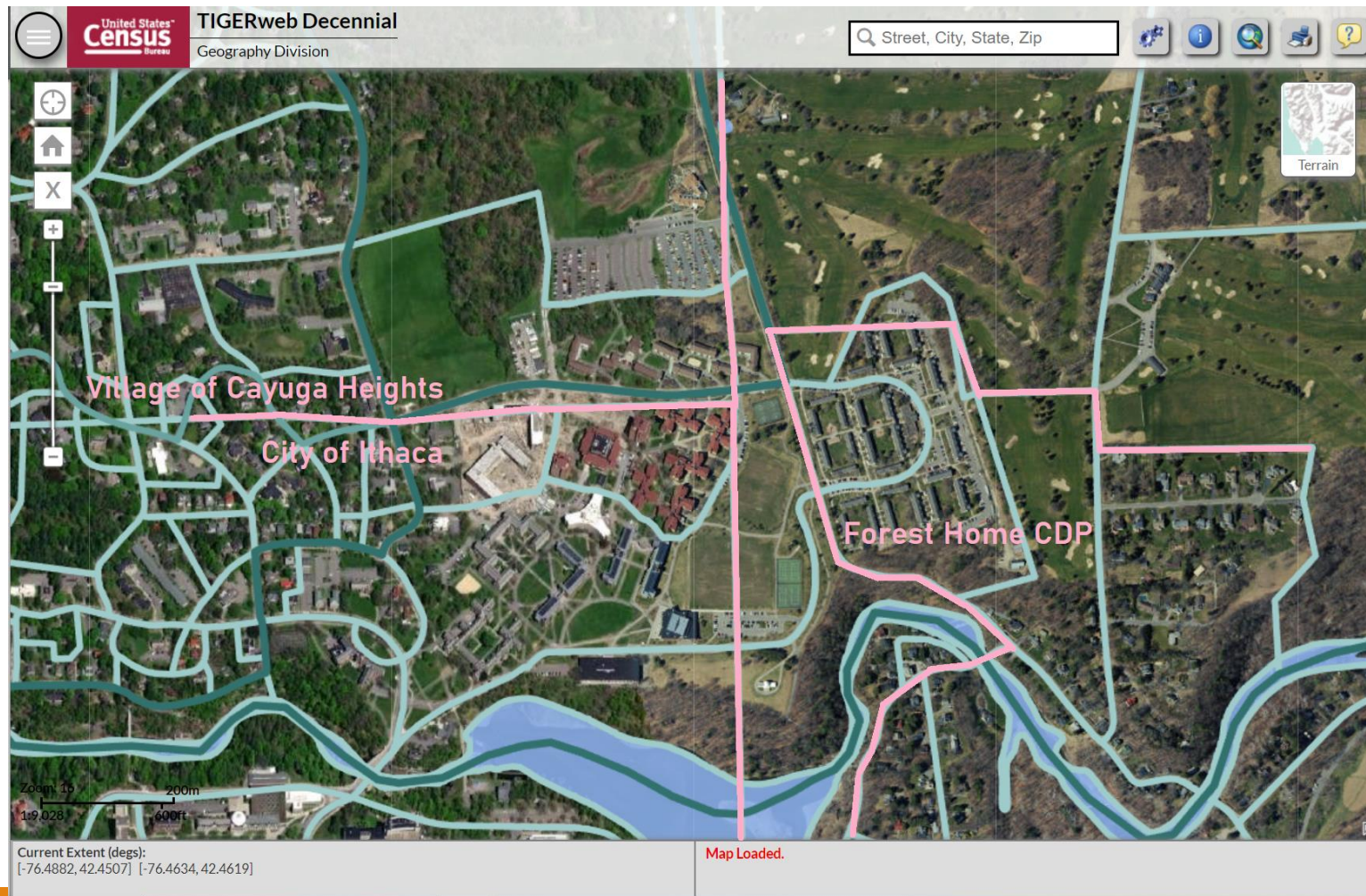
- Dormitory population counts increased by ~7,000
- 25 counties reported increases in dormitory populations
- As of 2020, New York County had the highest dormitory population (followed by Monroe, Tompkins, and Erie Counties)
- Franklin County experienced the largest decrease in dorm population
- ~28% university students living in dormitory facilities



Population: 218,960



Population: 226,149



Dormitory Populations at Cornell
Split across multiple blocks and Census designated areas

Dutchess County PCGQR

Three colleges in Dutchess
County under reported student
dormitory populations on
Census Day

*Vassar College reported 1863 students
in dormitories, Spring 2020 should be
2373 students in dormitories*

*Bard College reported 272 students in
dormitories. Spring 2020 should be
1100 – 1200 students in dormitories*

*Marist College reported 2654 students
in dormitories, Spring 2020 should be
3459 students in dormitories*



Thank you!