

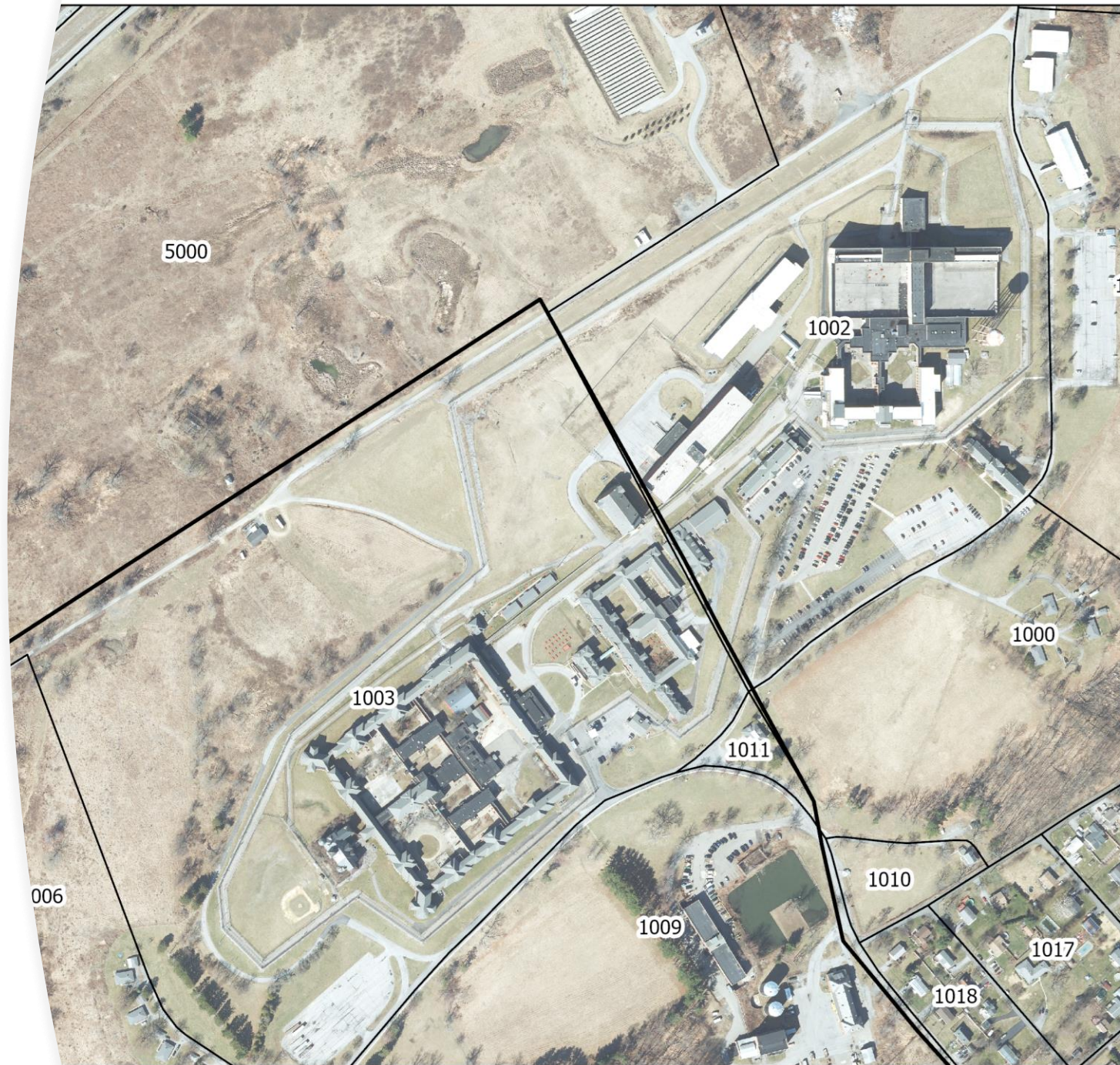
An aerial photograph of a campus or industrial site with various buildings and parking lots. Black lines delineate parcel boundaries, many of which are labeled with numbers such as 5000, 1001, 1002, 1000, 1016, 1004, 1005, 1006, 1009, 1010, 1015, 1017, 1018, and 1014. A large blue rectangular box is centered over the image, containing white text.

# CQR and PCGQR: A Local Perspective

Dylan Tuttle  
Planner, Dutchess County NY

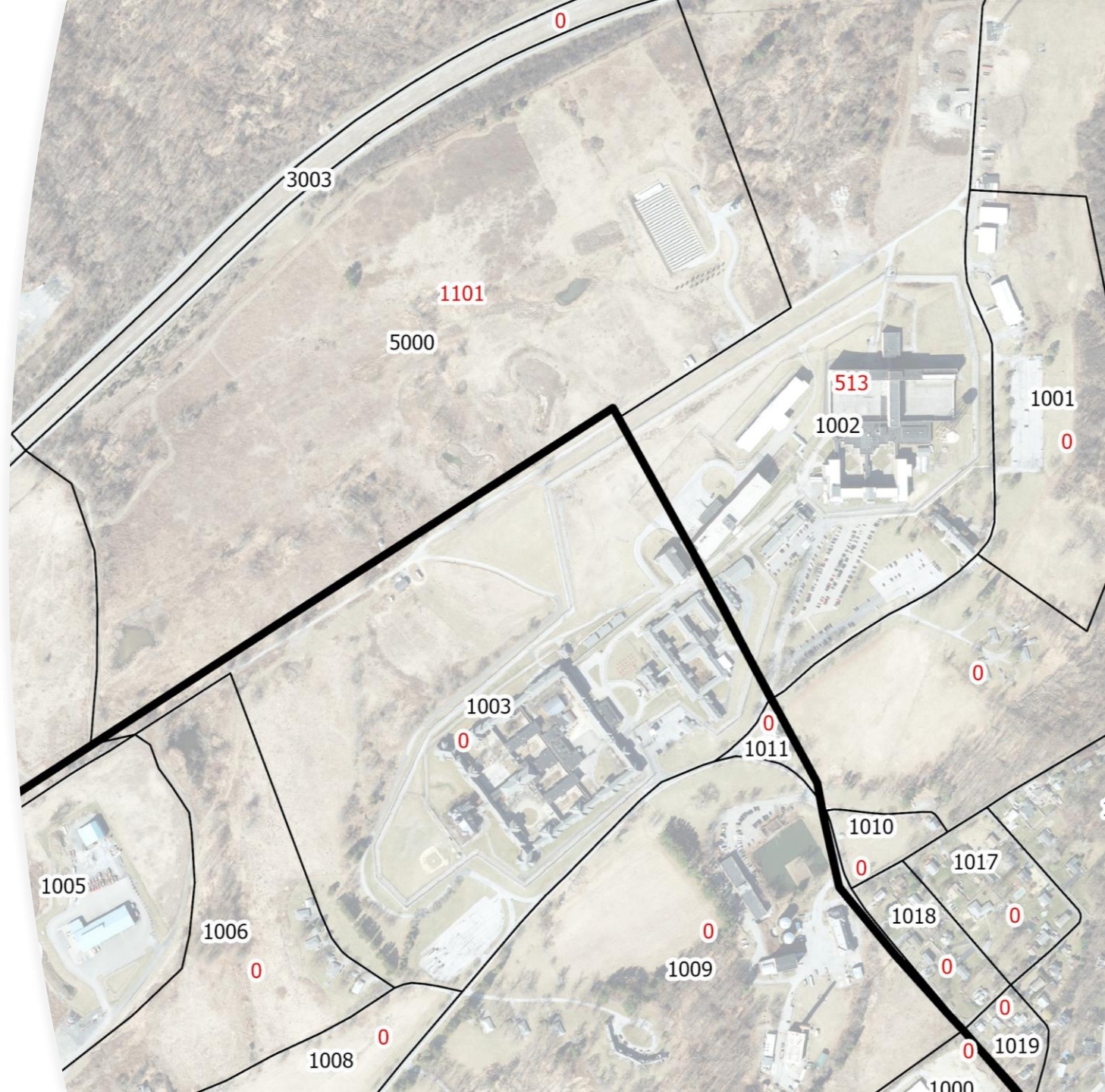
# CQR – Fishkill Correctional

- Straddles Beacon/Fishkill border, with inmate population in both historically
- Geolocation has been an issue in past Censuses (as have other prisons)
- Population change, 2010-2020:
  - Beacon, -830 (-5.7%)
  - Fishkill, +1,182 (+5.7%)
- Used GIS to map population change at agglomerated block level
- Found the discrepancy around the prison



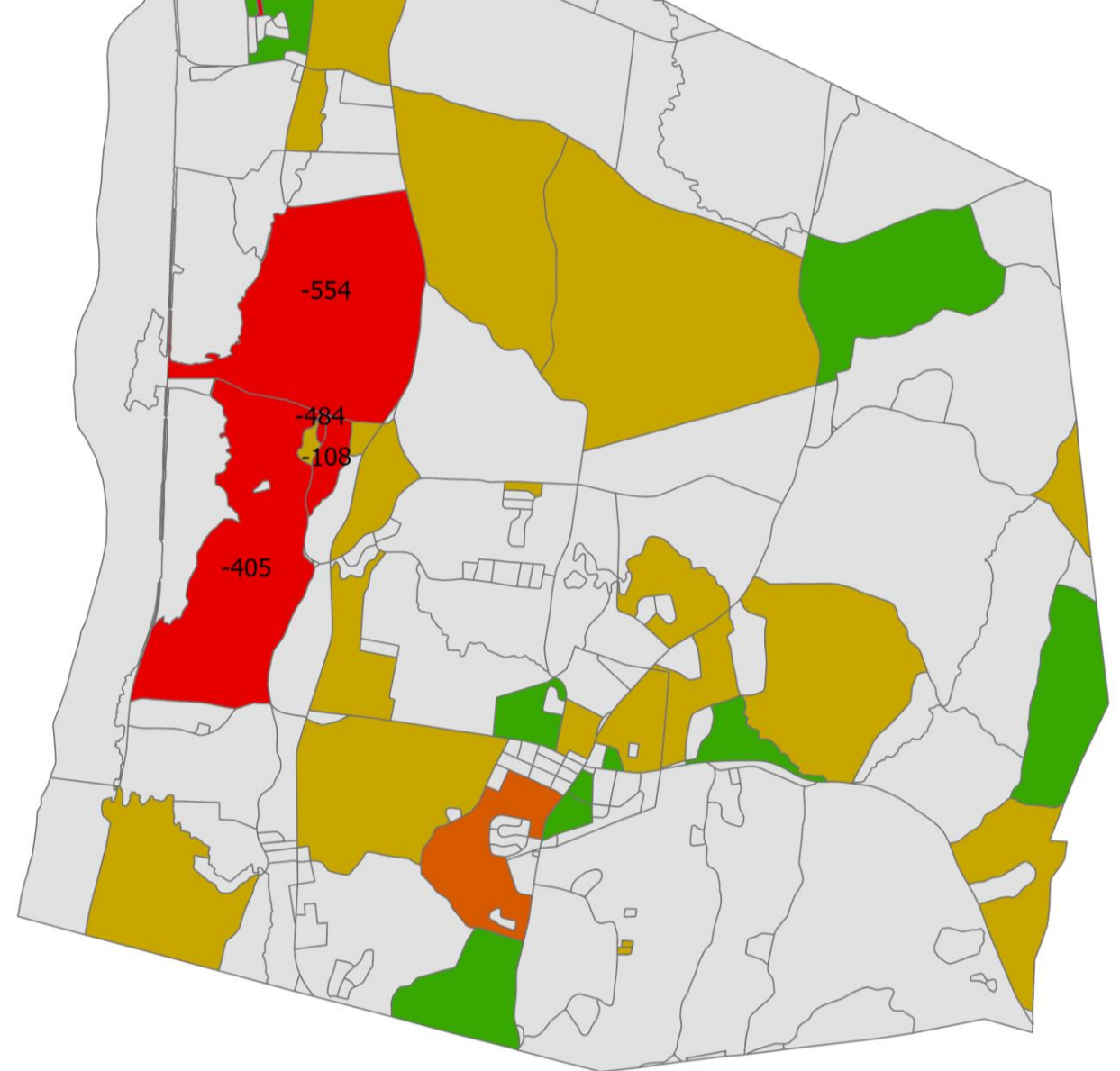
# CQR – Process

- Figuring out the issue was easy. Getting the corrected information from Corrections – not so much!
- Must be a middle-person (no direct communication between CB and Corrections)
- Submission is still under review

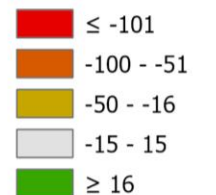


# PCGQR – Three Campuses

- Town of Red Hook population change, 2010-2020: -1,274 (-15.5%)
- Used GIS to trace discrepancy to Bard College campus
- Repeated exercise for other campus areas and found additional issues at Vassar and Marist
- Submitted all three as one PCGQR case in June 2022, with additional materials added in July and September
- Received decision in November (impressive!)

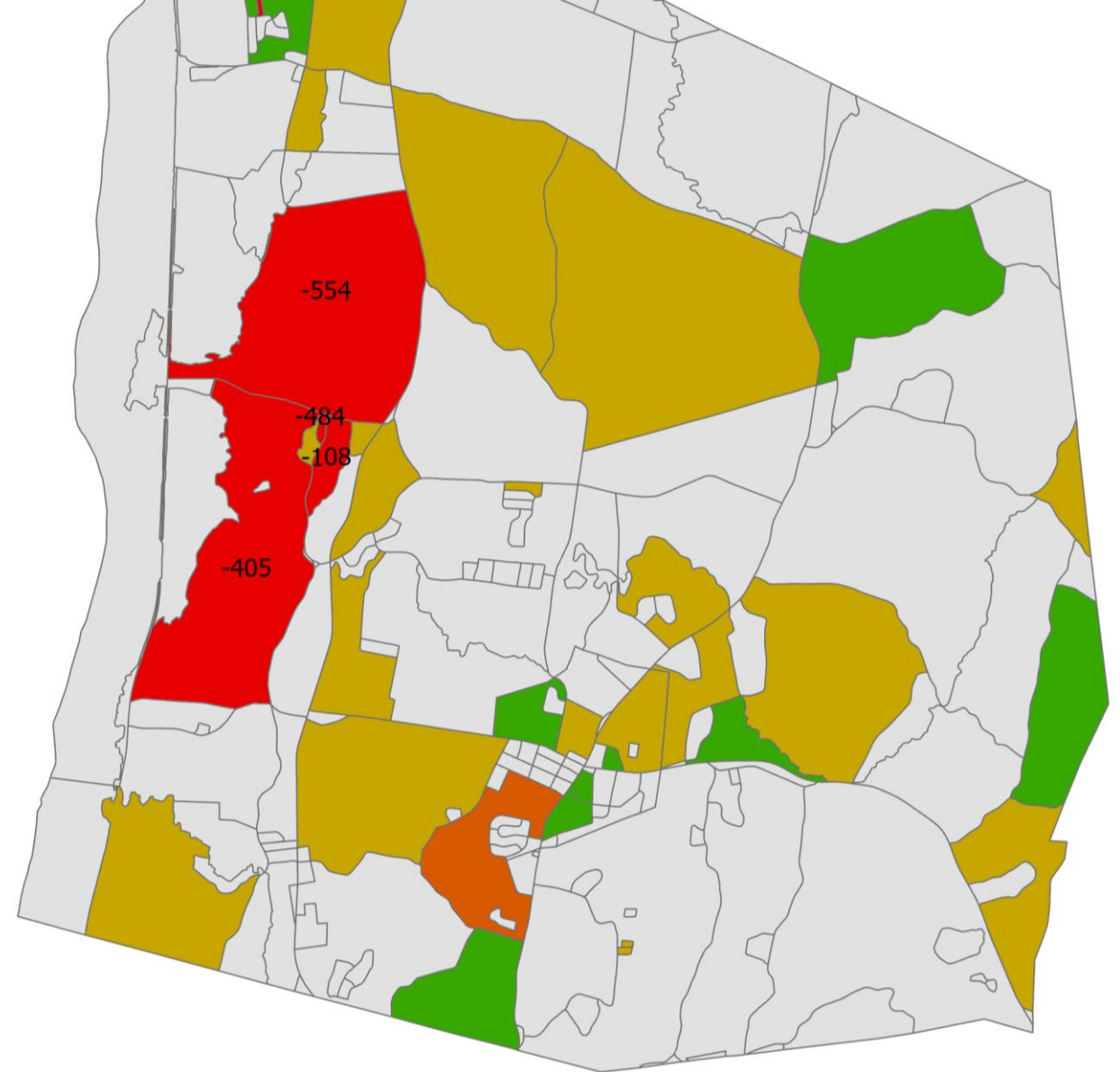


Red Hook Population Change, 2010-2020  
Per Decennial Census, Census Block Level\*

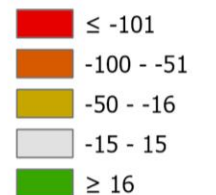


# PCGQR – Three Campuses

- Case was partially accepted
  - 48 GQs accepted
  - 3 GQs no change from existing numbers
  - 14 out-of-scope
- CB cannot provide any additional information on which GQs were accepted/out of scope or the change in accepted population
- Changes will not be incorporated into official Census estimates at municipal level for a while (2022 5-year? 2023 annual estimates?)



Red Hook Population Change, 2010-2020  
Per Decennial Census, Census Block Level\*



# Takeaways & Questions

- Grateful these processes exist
- Is it us? (only NYS CQR or PCGQR submission)
- Any hope for additional QR/QC on group quarters in the future?

Dylan Tuttle, [dtuttle@dutchessny.gov](mailto:dtuttle@dutchessny.gov)

