

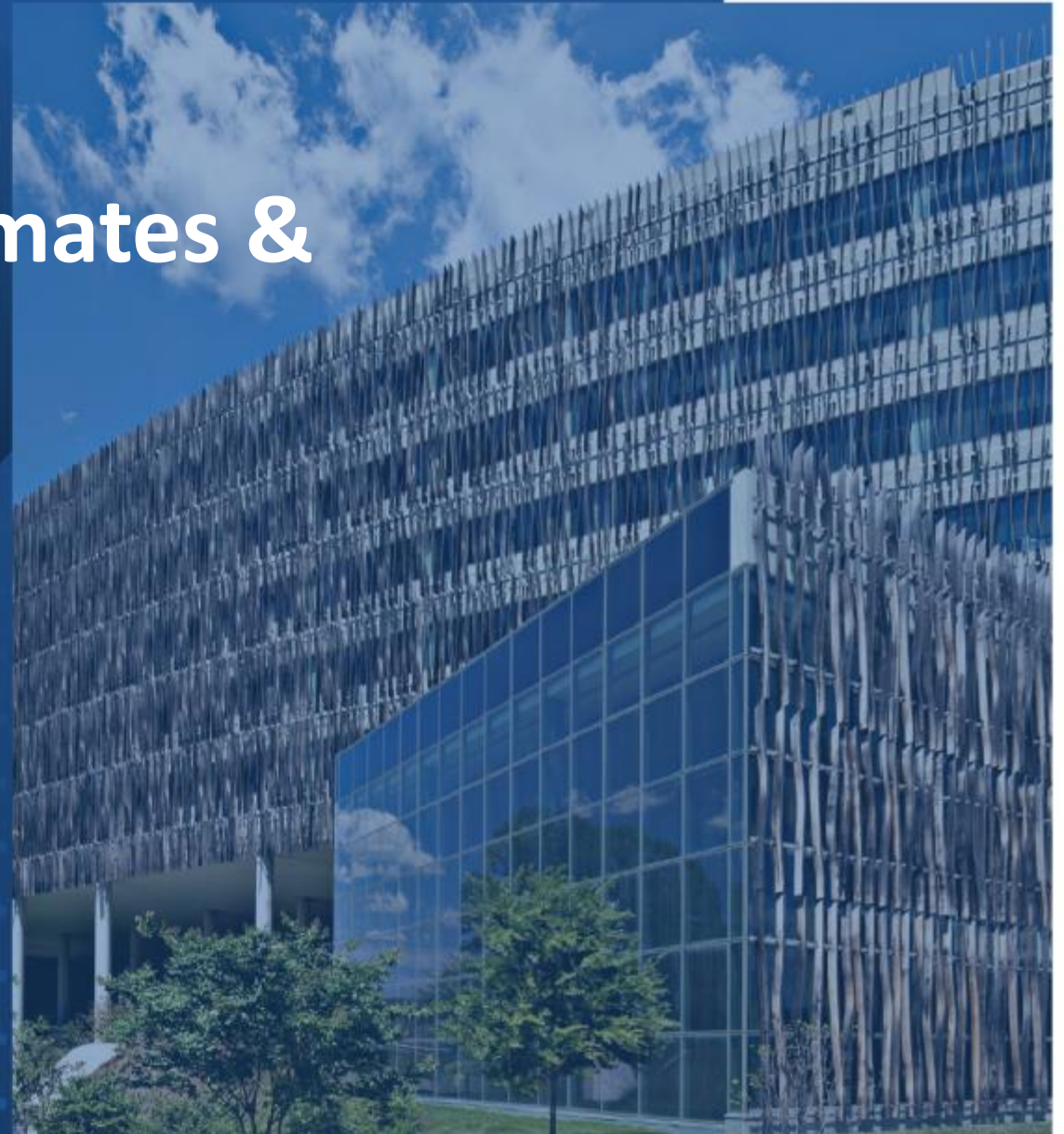
Community Resilience Estimates & My Community Explorer

October 29, 2024

Joli Golden

U.S. Census Bureau, Data Dissemination and Training Branch

joli.r.golden@census.gov





Community Resilience Estimates

Community Resilience Estimates



COVID-19 pandemic reiterated the need for usable information about the population.



Many groups reached out to the Census Bureau for data.



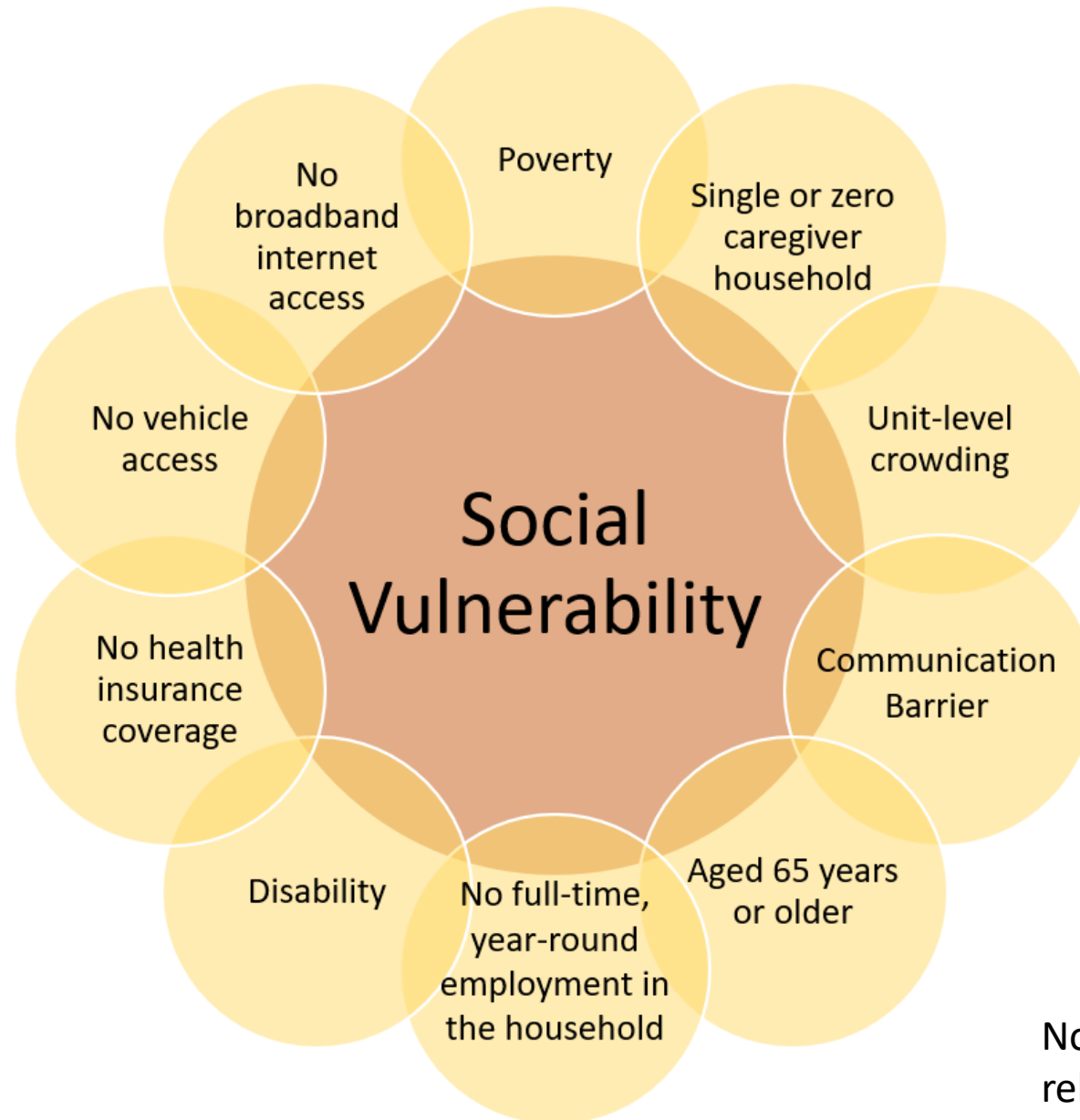
Overwhelming need for a single, easy to understand metric.

What is Community Resilience?

Community resilience is the capacity of individuals and households within a community to prepare, absorb, respond, and recover from a disaster.

Community Resilience Estimates – Risk Factors

Components of
Social Vulnerability
from the American
Community Survey



Community Resilience Estimates – Benefits

- **Timeliness** (1-year ACS).
- **Precision** (small area estimation reduces sampling error, increased measures of precision).
- **Granularity** (outputs estimates down to census tracts).
- **Adaptability/Growth** (geographic coverage, research topic, indicators, additional data sources).



America Counts Story

Bridge Collapse Could Affect Over a Million People in Baltimore Area

The Community Resilience Estimates show that 21.7% of residents in the combined areas of Baltimore city and County are considered socially vulnerable.



Community Resilience Estimates

United States[®]
Census
Bureau

Partners Researchers Educators Survey Respondents

News NAICS Codes Jobs About Us Contact Us Help

Topics Data & Maps Surveys & Programs **Resource Library**

Search data, events, resources, and more 🔍

Hurricane Helene's Impact on the Socially Vulnerable in North Carolina





// [Census.gov](#) / [Library](#) / [America Counts: Stories](#) / Hurricane Helene's Impact on the Socially Vulnerable in North Carolina

More Than Half a Million North Carolinians Under Disaster Declaration After Hurricane Helene Were at High Social Vulnerability to Disasters

October 11, 2024
Written by: Joey Marshall, Chase Sawyer, Heather King, Bethany DeSalvo, Walter Peacock

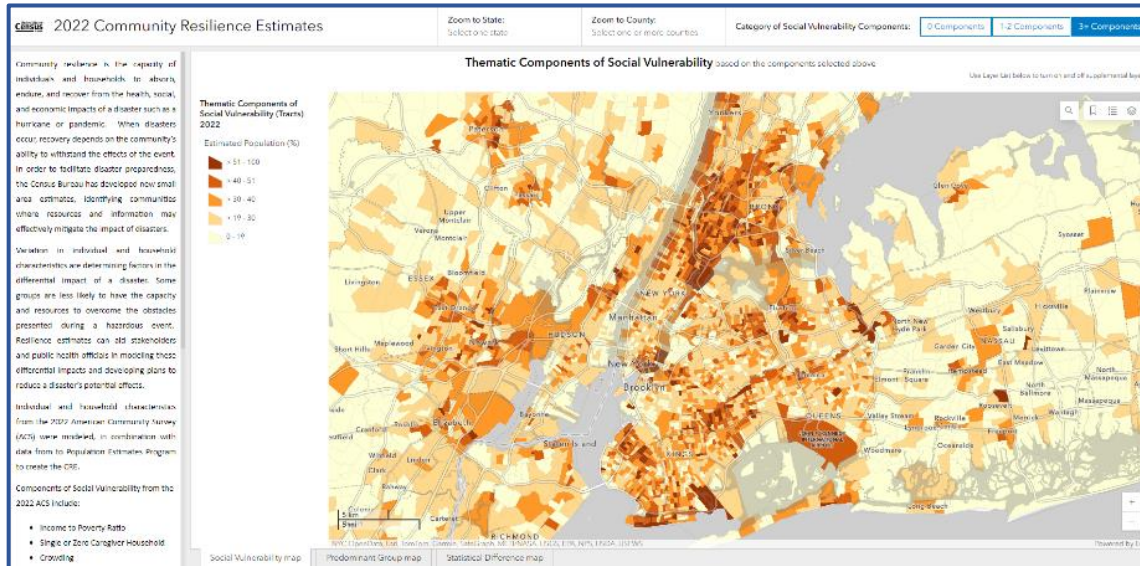
About 577,000 people (20.2%) living in the 27 counties in North Carolina under a major disaster declaration after Hurricane Helene had high social vulnerability to disasters, according to the U.S. Census Bureau's Community Resilience Estimates (CRE).

Those areas and one tribal area that also received a major disaster declaration suffered catastrophic flooding, power outages, property destruction and loss of life due to Helene, which reached Category 4 intensity on September 26. Thousands of homes were destroyed, many of which were not covered by flood insurance.

Share   

Related America Counts Stories

Community Resilience Estimates



United States Census Bureau

About Available APIs Guidance Latest Releases

Search data, events, resources, and more

// Census.gov / Data / Developers / Available APIs / Community Resilience Estimates

Community Resilience Estimates

May 23, 2024

Share

The Community Resilience Estimates track how socially vulnerable every neighborhood in the United States is to the impacts of a disaster. The Community Resilience Estimates use American Community Survey microdata and Population Estimates Program data to measure the capacity of individuals and households to absorb the external stresses of the impacts of a disaster.

2022

- API Call: api.census.gov/data/2022/cre
- Examples and Supported Geographies: api.census.gov/data/2022/cre.html
- Variables: api.census.gov/data/2022/cre/variables.html
- Example Call: api.census.gov/data/2022/cre?get=NAME,PRED12_M,PRED3_M,PRED3_E,PRED0_M,PRED12_E,POPUNI,PRED0_E&for=state:26&key=YOUR_KEY_GOES_HERE

2021

- API Call: api.census.gov/data/2021/cre
- Examples and Supported Geographies: api.census.gov/data/2021/cre.html

[Community Resilience Estimates Webinar](#)
[Community Resilience Estimates \(census.gov\)](#)

Community Resilience Estimates for Equity

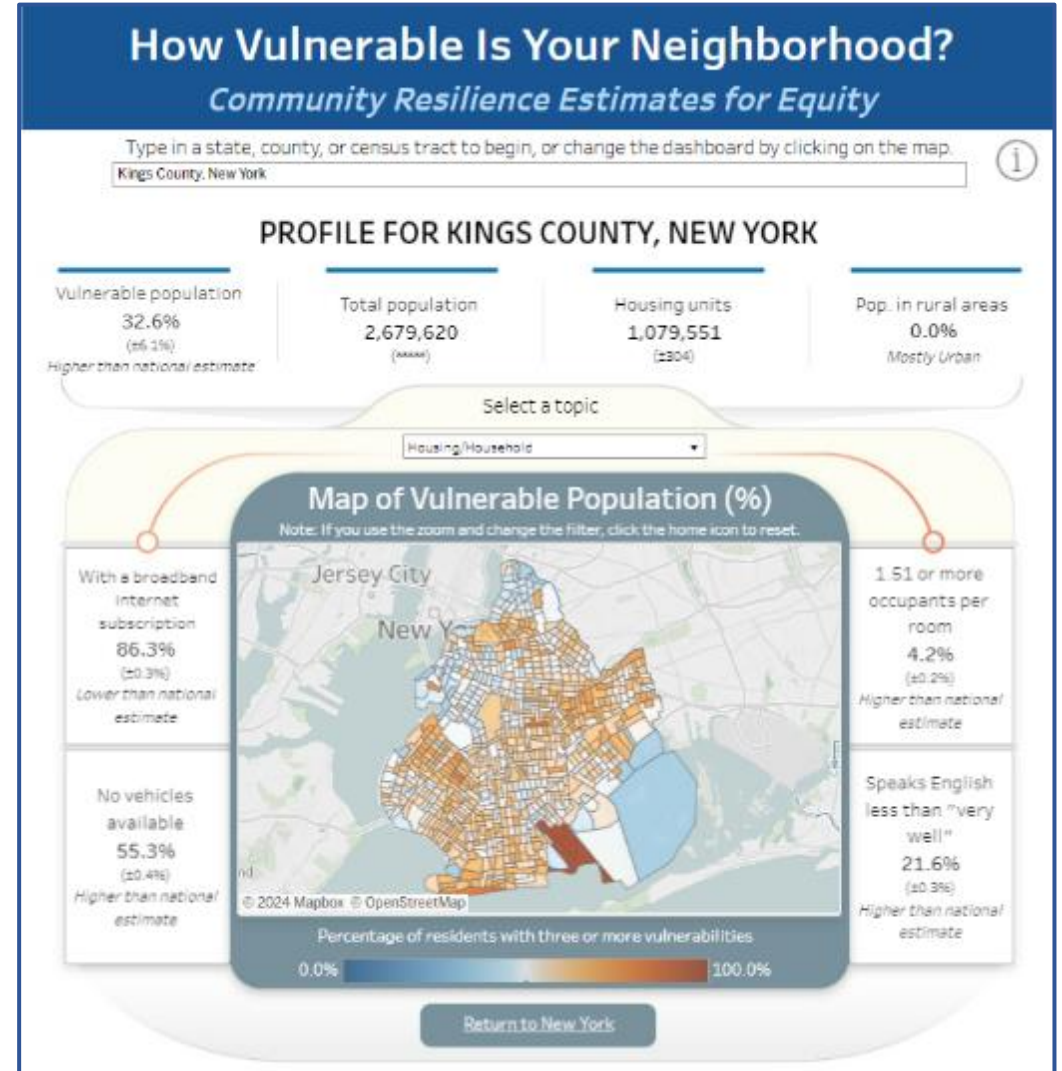
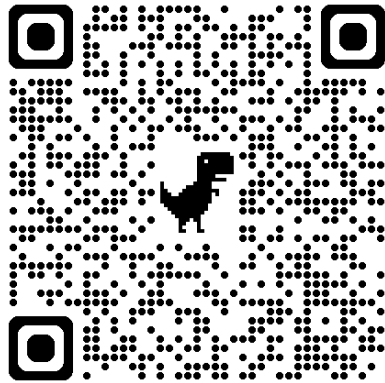
Topics

The following topics are included in the CRE for Equity dataset.

- Community Resilience
- Race and Ethnicity
- Disability
- Educational Attainment
- Housing Vacancy Rates
- Veterans Status
- Population Counts
- Sex
- Poverty/Income
- Internet Access
- Health Insurance
- Household Structure
- Housing Unit Counts
- Age
- Income Inequality
- Vehicle Access
- English proficiency

Community Resilience Estimates (CRE)

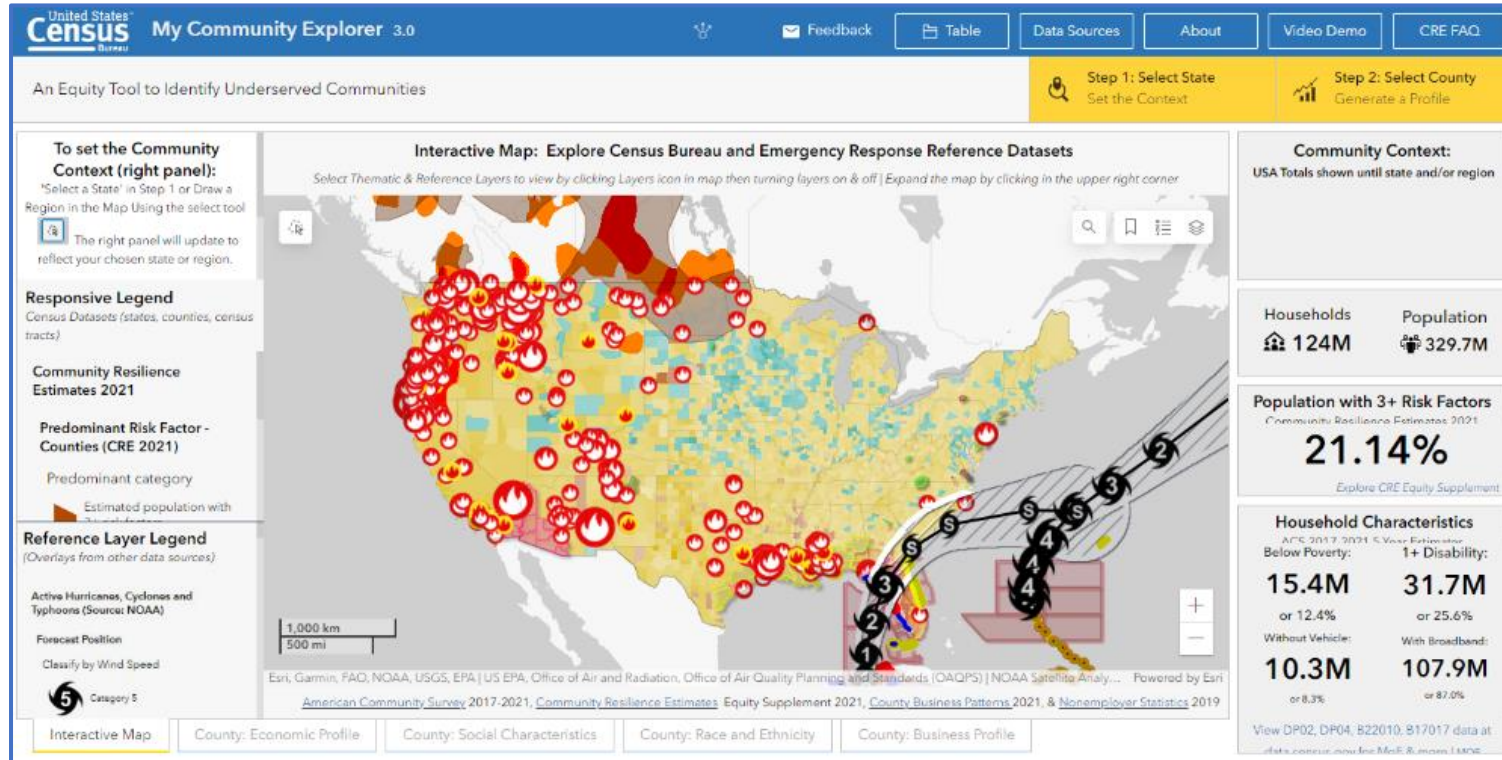
- CRE use data from:
 - American Community Survey
 - Population Estimates





My Community Explorer

My Community Explorer



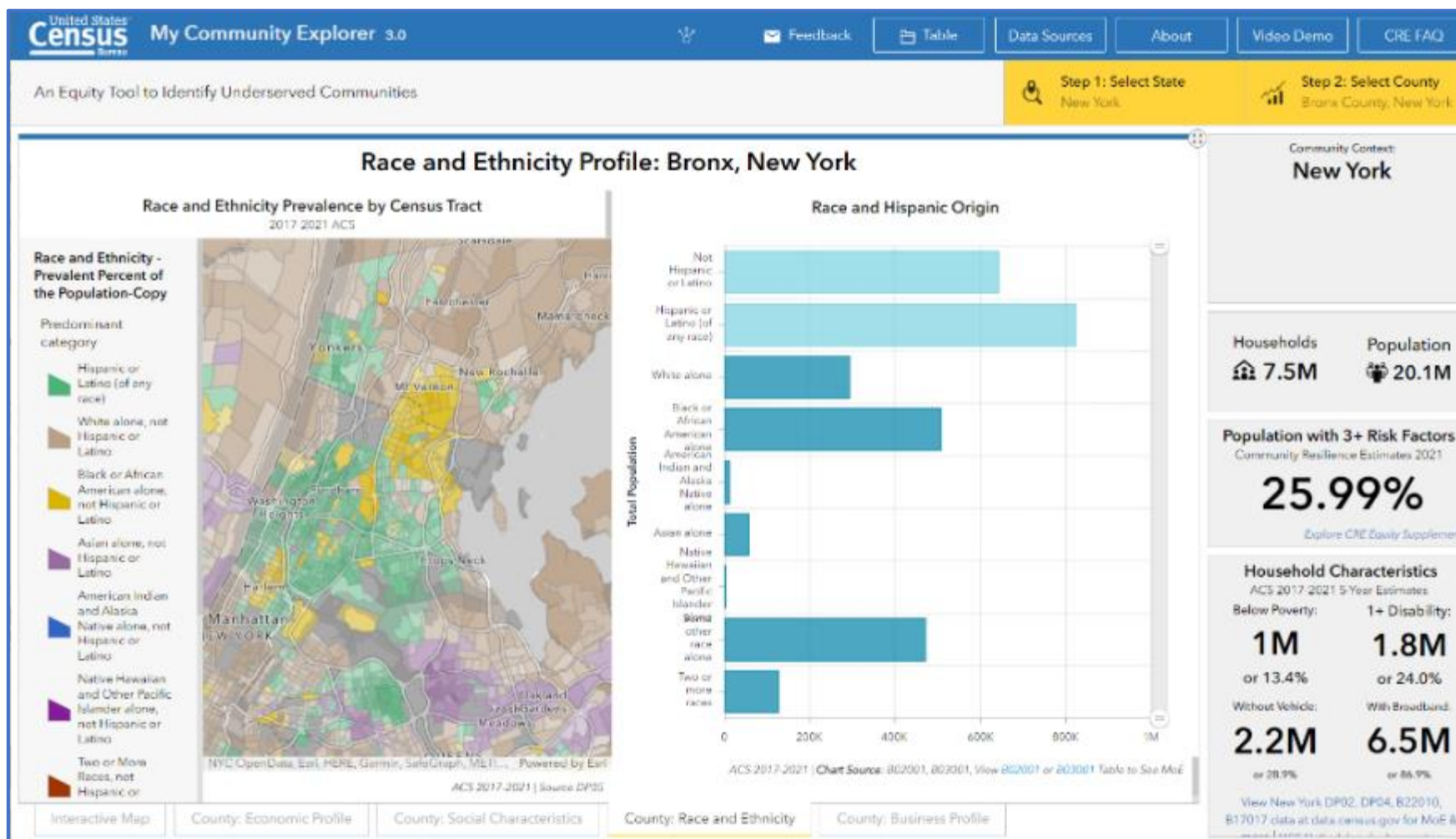
Datasets Included in My Community Explorer:

- Community Resilience Estimates
- American Community Survey
- County Business Patterns
- Nonemployer Statistics

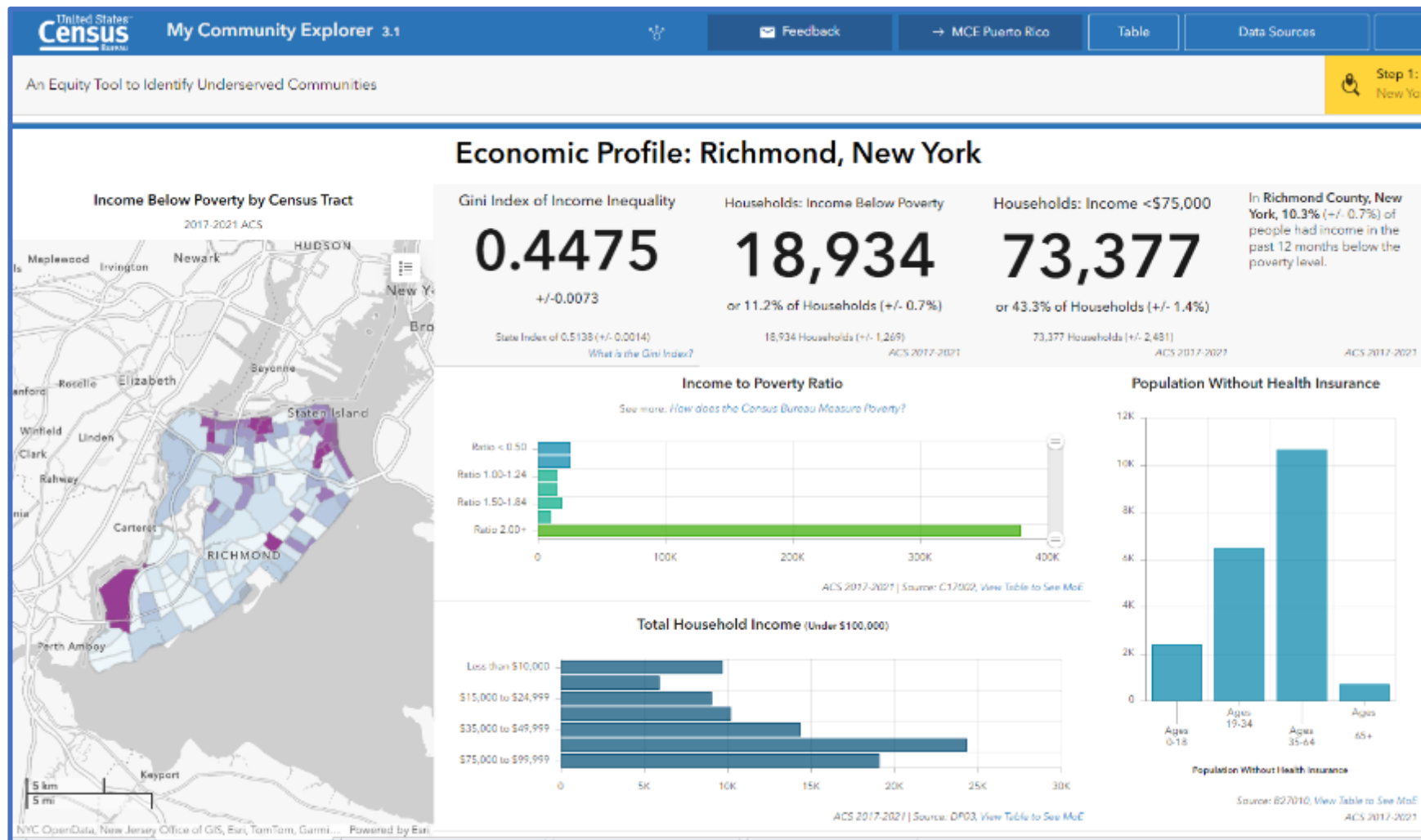
[My Community Explorer Tool](#)

Instructional Video: [My Community Explorer Training Video - YouTube](#)

My Community Explorer



My Community Explorer



Live Demo

My Community
Explorer

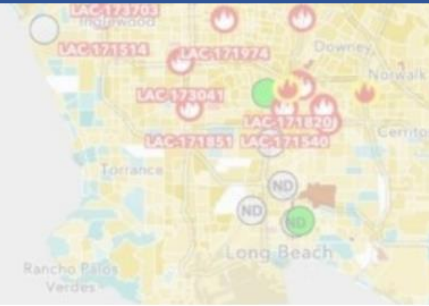


Emergency Management Hub

Emergency Management Hub

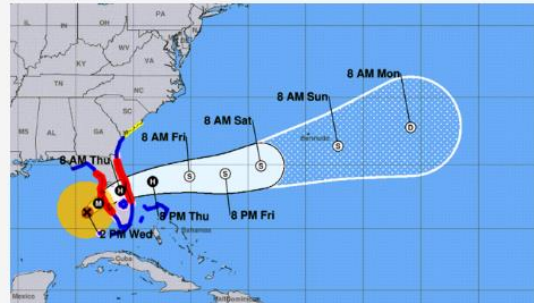
The U.S. Census Bureau produces timely local data on disasters.census.gov that are critical to emergency planning, preparedness, and recovery efforts.

[VIEW EVENTS](#)



Recent Events

[View All Events](#)



2024 Hurricane Milton

Milton was the thirteenth named storm, ninth hurricane, fourth major hurricane, and second Category 5 hurricane of the 2024 Atlantic hurricane season.

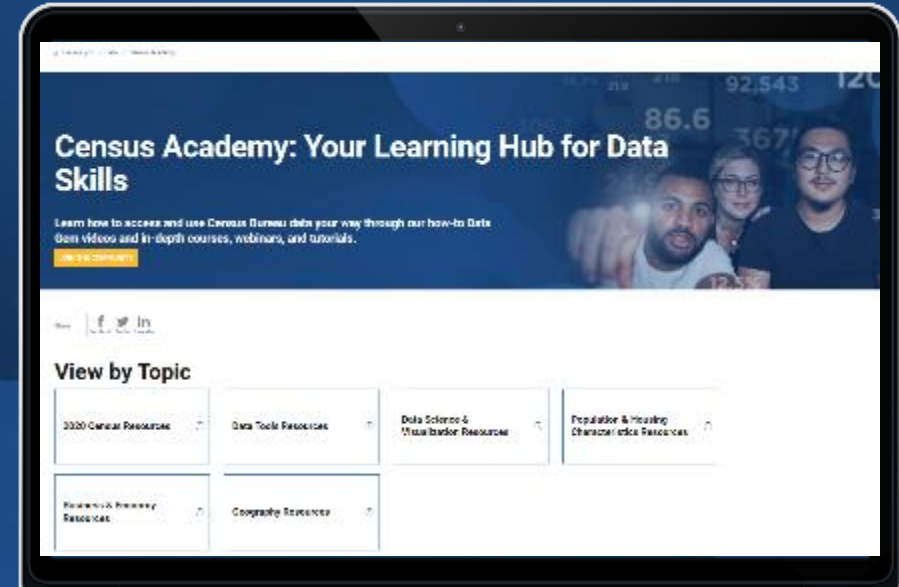
[Learn More](#)

Data Dissemination and Training

- **Bring our data experts to you.**
Request a free data training for your organization.
- **Receive our Data Gems.**
These short “how-to” videos are an easy and quick way to increase your knowledge of Census data. Get them in your inbox!
- **Get access to our Courses.**
You will learn-at-your-own-pace with these video-tutorials designed for different skill levels.
- **Interact with our instructors via Webinars.**
Learn about our data releases and tools while attending these live virtual classes.



Census.gov/Academy



Contact us:

Census.askdata@census.gov

1-844-ASK-DATA

*Share your ideas and feedback at
census.academy@census.gov*

Get in Touch

Joli Golden
**Data Dissemination and
Training Branch**
U.S. Census Bureau
Joli.R.Golden@census.gov
(202) 235-4727

Census.askdata@census.gov
1-844-ASK-DATA

[@uscensusbureau](https://twitter.com/uscensusbureau)
Subscribe: census.gov/academy